



KING CONSERVATION DISTRICT FUNDING INVESTED IN THE TOWN OF YARROW POINT

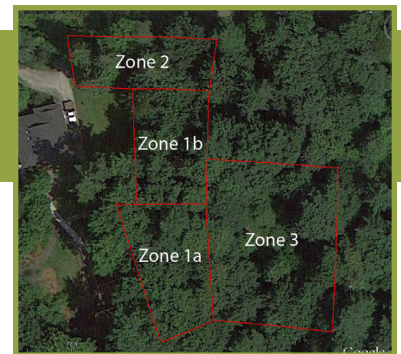
GRANT AWARDS—King Conservation District awards grants to local governments, nonprofit organizations, tribes, and other agencies to improve natural resources and increase regional conservation. District funds for projects listed below were collected from an annual, per-parcel assessment or rate and charge for projects in partnership with Member Jurisdictions and/or the three watershed forums. These monies support high-impact projects in both urban and rural areas and are often matched with funding from state, federal, and other sources. For more information on these projects or about the grant programs, please contact Jessica Saavedra at 425-282-1906 or e-mail Jessica.Saavedra@kingcd.org. Visit our website at www.kingcd.org and find us on Facebook.

SERVICES—In addition to the conservation services and cost share awards, the District also provides services to cities and residents in the areas of shoreline restoration, urban agriculture and urban forestry. Future publication of this document will include more information about these services.

King Conservation District Funded Member Jurisdiction Grants in the Town of Yarrow Point

In 2012, the District awarded a joint grant to the Towns of Hunts and Yarrow Point for \$13,656. \$9,357 of the grant award is funded with assessments from the Town of Yarrow Point. The grant will help the two communities collaborate on restoration efforts and will result in invasive plant removal and native plantings in Weatherill Nature Preserve and Morningside Park (photo right). Morningside Park is a 7.8 acre park located in the Town of Yarrow Point and along the shores of Lake Washington.

The goal for the project is to work in zones with high invasive coverage and low native plant diversity. With the help of the Friends of the Cedar River Watershed, the Towns will foster community-supported invasive plant removal to reestablish native habitat areas. They hope to remove 2.5 acres of invasives and brush piles, salvage Maple trees, add mulch, and plant more than two hundred native plants.



Summary of King Conservation District – Town of Yarrow Point Member Jurisdiction Funding Available for Grants or Services

1994-2015 Assessment/Rates and Charges Collections	\$11,959.81
2016 Rates & Charges Collections	\$ 755.12
Total Collections	\$12,714.94
Total Utilized to Date (see list of grants and/or services above)	\$9,357.00
Amount Available Today to Utilize for Grants or Services as of 1/9/17	\$3,357.94
Estimated 2017 Rates & Charges Collections	\$ 750.00
Estimated Total Amount Available to Utilize for Grants or Services (including estimated 2017 collections, subject to change)	\$4,107.94

