

The Conservation CONNECTION



Promoting sustainable uses of natural resources through responsible stewardship.

14th Annual Bare-root Tree and Shrub Sale

Winter is the time to plan your spring plantings! A good place to start your conservation projects is by ordering bare-root native plants from KCD.

Pre -Order
NOW!!
for Pickup on
March 3rd & 4th
.....
Open Sale Dates
Also March
3rd & 4th

The King Conservation District offers a variety of native trees and shrubs for conservation purposes such as wildlife habitat, windbreaks, hedgerows, refor-

estation, wetland and stream enhancement, and erosion control as well as for landscaping around homes and farms. **(The plants range in size from 8 inches to 2 feet and are bare-root stock.)** This means they do not come in pots or burlap bags, but are harvested from the field in winter when the plants are dormant and are ready to be replanted. Bare-root plants are hardy, have well developed roots and are easy to handle, transport and plant.

with large quantities of high quality affordable bare-root trees and shrubs. See the inside of this newsletter for additional information and an order form.



Red Osier Dogwood

The Red Osier Dogwood was used by Native Americans for medicinal purposes, basket making, and drying salmon; the bark was also smoked.



Red Flowering Currant

This Northwest native has spawned ornamental cultivars that are highly prized in Europe.



Inside This Issue

2006 Native Plant Sale

- Order Form
- Plant Sale Information
- Tree and Shrub Descriptions
- Native Plant Project Ideas

Change Service Requested

935 Powell Avenue S.W.
Renton, WA 98055

KING CONSERVATION DISTRICT

Tree and Shrub Descriptions



TREES - Evergreen

Douglas Fir (*Pseudotsuga menziesii*) A fast growing conifer found in a wide range of habitats. It reaches 200 feet at maturity and needs full sun. It yields more commercial timber than any other tree in the Northwest and is named for the famous explorer and botanist David Douglas.

Grand Fir (*Abies grandis*) A popular Christmas tree and important lumber producer, it grows in a variety of site conditions and is characterized by downward sloping branches and thick foliage.

Noble Fir (*Abies procera*) A fast growing, beautifully symmetrical tree that thrives in moist soils with full sun. It is commonly grown as a premium Christmas tree.

Sitka Spruce (*Picea sitchensis*) A fast growing, majestic conifer that grows well along streams and wetlands. It was used extensively in the manufacture of aircraft due to its lightweight, strong wood.

Western Hemlock (*Tsuga heterophylla*) A shade loving, graceful evergreen characterized by a drooping top. The Washington State tree.

Western Red Cedar (*Thuja plicata*) A large, slow growing, water loving tree that grows well in the shade. It has many historical uses in the culture of the Northwest ranging from the making of canoes to medicine.

Shore Pine (*Pinus contorta*) A hardy pine that can tolerate dry and low nutrient conditions.

TREES - DECIDUOUS

Cascara (*Rhamnus purshiana*) A small tree that grows to 30 feet and does well in moist, partially shaded sites.

Oregon Ash (*Fraxinus latifolia*) A native ash that likes moist sites. It is a medium sized, deciduous tree that produces very durable wood used for tool

handles and furniture.

Vine Maple (*Acer circinatum*) A small multi-stemmed shrub or tree that provides fall color, erosion control and "helicopter" winged seeds that are eaten by squirrels and birds.



NOOTKA ROSE

SHRUBS

Black Hawthorn (*Crataegus douglasii*) A large shrub or small tree with thorns commonly used for hedgerows and along fence lines.

Mock Orange (*Philadelphus lewisii*) A popular native shrub that has a showy display of white flowers and a citrus scent. It will reach 10 feet in height and grows well in a variety of site and soil conditions.

Nootka Rose (*Rosa nutkana*) An attractive native wild rose that has pink rose blooms and forms a low growing thicket. Grows well in full sun and provides wildlife habitat.

Oregon Grape Tall (*Mahonia aquifolium*) An understory or groundcover plant that grows up to 5 feet tall. Has leaves similar to holly and produce smallish golden yellow flowers that become blue berries.

Oregon Grape Short (*Mahonia nervosa*) A shorter version of tall oregon grape and still used for understory or groundcover. This plant grows up to 2 feet tall.

Pacific Ninebark (*Physocarpus capitatus*) A great native shrub for streambank planting, it is a dense growing shrub reaching 12 feet in height.

Red Flowering Currant (*Ribes sanguineum*) A popular native shrub commonly sold for ornamental purposes, it grows up to 12 feet and produces red flowers in the early spring which attract hummingbirds.

Red Osier Dogwood (*Cornus stolonifera*) A common streambank shrub, its bright red stems make it stand out during the winter. Commonly browsed by deer and elk, it grows to 15 feet and is ideal for erosion control on wet sites.

Serviceberry (*Amelanchier alnifolia*) A native shrub or small tree, it produces fragrant clusters of white flowers and sweet edible berries which are a favorite of wildlife. Grows best in drier soils with full sun.

Snowberry (*Symphoricarpos alba*) A low growing native shrub that tolerates drier sites and produces characteristic white berries.

Kinnikinnick (*Arctostaphylos uva-ursi*) A low growing groundcover with red berries that grows well on dry sites. The name is thought to mean 'smoking mixture'. *cont'd on page 6*

The *Conservation Connection* is published quarterly by King Conservation District

Materials contained in this publication may be reprinted with credit given to the *Conservation Connection*, King Conservation District. Address correspondence to King Conservation District, 935 Powell Avenue S.W., Renton, WA 98055;(425) 277-5581 x105

Editor: Geoff Reed
Newsletter Layout: Roseanne Campagna

King Conservation District is a subdivision of state government created to promote the wise use of natural resources. A five-member board of supervisors, representing local interests, hold meetings on the second Wednesday of each month at our office in Renton. The public is encouraged to attend.

Plant Sale Information



To Pre-Order:

BY MAIL:

Simply fill out the order form and mail along with a check payable to:

King Conservation District
935 Powell Ave. SW
Renton, WA 98055

IN PERSON:

Come to our office (Monday-Friday 8:00-4:00)

An order confirmation will be sent after we receive your order and will contain additional information on picking up your plants.

Questions or more information? Call **425-277-5581 ext.119 or 129**

Orders will be taken until **February 10, 2006.**

OPEN SALE DATE:

March 3rd and 4th, 2005.

PLANT PICK-UP:

Plant pre-orders will be available for pick-up at our Renton Office, Friday and Saturday, March 3rd and 4th. Your order confirmation will be mailed to you and will contain the specific details on where and how to get your plants.

PLANT SIZES:

Plants are from 1 to 2 years old and range in size from 8 inches to 2 feet and come bare-root. Salal and Kinnickinnic are smaller "plugs"

PAYMENT:

All orders **must** be prepaid to secure your order. A purchase order is also acceptable for agencies, businesses and non-profits. We cannot accept credit cards. In the event we cannot fill part or all of your order, a refund or plant substitution will be offered.

AVAILABILITY:

All plants are sold on a first-come, first-serve basis. Quantities are limited and some species always sell out so please **order early.**

SURVIVABILITY:

Occasionally we receive reports on plants dying. Generally, mortality should be no more than 10-20%. If you have trouble with a species, let us know and you can order replacements for free at the following year's tree sale.

QUANTITIES:

All plants come in bare-root bundles and are sold in groups of 10 of one species. This is for ease of handling and simplicity in filling orders.

QUESTIONS:

Can't find what you are looking for? We can direct you to other local nurseries that sell native trees and shrubs through our Restoration Growers Association. 425-277-5581 ext.129

West side Willows and Cottonwood cuttings are available by special order in quantities of 50 or more per species.



2006 Tree and Shrub Sale Order Form



TREES

	<i>Price Per Unit</i>	<i>Quantity</i>	<i>Price</i>
DOUGLAS FIR	10 trees for \$ 6.00	_____	_____
GRAND FIR	10 trees for \$ 6.00	_____	_____
NOBLE FIR	10 trees for \$ 8.00	_____	_____
SITKA SPRUCE	10 trees for \$ 7.00	_____	_____
WESTERN HEMLOCK	10 trees for \$ 10.00	_____	_____
WESTERN RED CEDAR	10 trees for \$ 10.00	_____	_____
SHORE PINE	10 trees for \$ 7.00	_____	_____
VINE MAPLE	10 trees for \$ 14.00	_____	_____
CASCARA	10 trees for \$ 16.00	_____	_____
OREGON ASH	10 trees for \$ 15.00	_____	_____

SHRUBS

INDIAN PLUM	10 shrubs for \$ 14.00	_____	_____
MOCK ORANGE	10 shrubs for \$ 13.00	_____	_____
NOOTKA ROSE	10 shrubs for \$ 12.00	_____	_____
PACIFIC NINEBARK	10 shrubs for \$ 13.00	_____	_____
RED FLOWERING CURRANT	10 shrubs for \$ 13.00	_____	_____
OCEAN SPRAY	10 shrubs for \$ 12.00	_____	_____
RED OSIER DOGWOOD	10 shrubs for \$ 11.00	_____	_____
SERVICEBERRY	10 shrubs for \$ 14.00	_____	_____
SNOWBERRY	10 shrubs for \$ 12.00	_____	_____
TWINBERRY	10 shrubs for \$ 12.00	_____	_____
BLACK HAWTHORN	10 shrubs for \$ 13.00	_____	_____
OREGON GRAPE (TALL)	10 shrubs for \$ 13.00	_____	_____
OREGON GRAPE (SHORT)	10 shrubs for \$ 13.00	_____	_____
KINNIKINNICK	10 shrubs for \$ 13.00	_____	_____
SALAL	10 shrubs for \$ 13.00	_____	_____

SubTotal _____

8.8% Tax _____

TOTAL DUE =====

NAME _____

ADDRESS _____

DAY PHONE _____

**COMPLETE AND MAIL ORDER FORM W/ CHECK PAYABLE TO: KCD 935 POWELL AVE. S.W., RENTON, WA 98055.
QUESTIONS? CALL 425-277-5581 Ext. 119 THANK YOU FOR YOUR ORDER!**



NATIVE PLANT PROJECT IDEAS

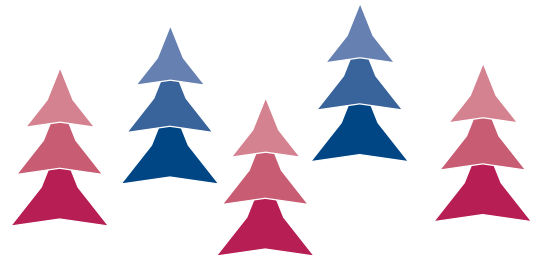
Here are just a few ideas for planting projects you can do with native plants from the Conservation District

- 1) "Naturescape" your front yard and stop mowing the grass
- 2) Plant a Backyard Wildlife Habitat Project and register it with the WA Dept of Fish and Wildlife
- 3) Install a hedgerow along the fence for bird habitat and privacy
- 4) Grow some beautiful Christmas Trees for 2010 to give to your friends
- 5) Plant a Lewis and Clark Bi-centennial Garden to showcase our natural history
- 6) Hold a charity native plant sale fund-raiser to raise money
- 7) Plant a raingarden utilizing roof water runoff

If you are interested in learning more on any of these project ideas, call Geoff Reed at the Conservation District at 425-277-5581 ext. 103 or geoff.reed@kingcd.org

Funding Opportunity for Small Forest Landowners!

The Family Forest Fish Passage Program is a voluntary program through which landowners can receive financial and technical assistance for removing or repairing fish barriers on forestland. A fish barrier is any artificial (human-caused) instream structure that impedes the free passage of fish. Examples of fish passage barriers include culverts, dams, weirs, and stream crossings. Cost share rates range from 75%-100%. The project must be located on forestland, on a fish-bearing stream and must be associated with a forest road. If you would like to have a potential fish barrier evaluated for eligibility, please contact DNR's Small Forest Landowner Office for assistance. Application information can be obtained by calling 360-902-1404, email at scott.potter@wadnr.gov, or visit the web at: www.dnr.wa.gov/sflo/ffpp.



Check out these sources for more information on native plants!

Washington Native Plant Society - a non-profit group dedicated to conserving and studying native flora. Offers a stewardship program, education and plant sale. 206 527-3210 or www.wnps.org

Books: *Plants of the Pacific Northwest Coast* - by Pojar & MacKinnon
Gardening With Native Plants - by Arthur R. Kruckeberg



AFO/CAFO Self-Assessment Tool

In 2003, the US Environmental Protection Agency (EPA) adopted new rules regarding animal feeding operations (AFOs) and concentrated animal feeding operations (CAFOs). Under the new rules, certain AFOs can be designated as CAFOs and may be required to obtain a National Pollutant Discharge Elimination System (NPDES) permit. These permits will be administered by the Washington Department of Ecology.

The King Conservation District farm planning staff has completed training to help you determine if your operation is at risk of being designated a CAFO. We can help develop a farm management plan that helps address the major risk factors that may lean to the designation.

For more information & tools go to our website www.kingcd.org, or call Jason Mirro at 425-277-5581 x121.

Upcoming Events

Volunteer Opportunities

The staff of the King Conservation District invites you to participate in a variety of environmental restoration projects where you will learn about restoring streams and wetlands, using native plants to restore native plant communities, and engineering techniques to enhance fish and wildlife habitat. These projects are both fun and educational! Contact Amy, (425) 277-5581 ext 129, amy.tippery@kingcd.org, for more information on these and other volunteer opportunities.

Winter 2006

Garden of Goo

Native plants grown from locally collected seed are the corner stone of conservation and ecological restoration. Learn about and actively participate in growing native plants for stream and wetland restoration and enhancement projects. Activities include starting plants from seed and cuttings, and transplanting and maintaining nursery stock. Activities will occur at the King Conservation District nursery facility in Renton from **9AM – 12PM**.

Scheduled volunteer dates include:

January: 6th, 7th, 20st and 21rd
February: 10th, 11th, 24th and 25th
March: 11th and 25th



Free - Workshops on Land and Water Stewardship for Livestock Owners

Do you own horses, ponies, cattle, goats, sheep, pigs or other livestock? Are you ready to build and install livestock management practices that will help you reduce mud, manage manure and deal with wetlands? Do you want to know how to start?

The King Conservation District is offering four **FREE** workshops on land and water stewardship practices for livestock owners. As a workshop participant, you will receive one-on-one guidance from District farm planners and technicians to help you design, construct and implement livestock management practices that can meet your specific needs and circumstances. Attend all four workshops, or only those that meet your needs.

Workshops will be held at the Preston Community Center from 6:30 pm – 9:00 pm.

You must pre-register...

For more information or to register call the King Conservation District at (425) 277-5581 ext. 120.

Class size is limited so register early.

- **Streams and Wetlands: Living with Livestock near Water.** Take the plunge and protect your property, water quality, fish and wildlife habitat. Attend this workshop to design a stream or wetland native plant restoration plan. Calculate the length and cost of a livestock exclusion fence for sensitive areas, select native plants suited to stream and wetland buffers, determine plant placement, and outline a maintenance plan. **(Thursday, February 16th, 2006)**
- **Mud Management: Record Rainfall – Record Mud.** It's always the right time to prepare for wet weather. Attend this workshop to develop a mud management plan. Design a confinement area for livestock, select footing material, estimate gutter and downspout needs based on barn roof runoff, and develop a confinement schedule. **(Thursday, February 23rd, 2006)**
- **Manure Management: Got Livestock? Got Manure!** Discover what's possible based on your finances, time and ability. Attend this workshop to develop a manure composting and utilization plan. Estimate the volume of manure produced by livestock, design and construct livestock manure storage bunkers or compost bins. Develop a plan to spread composted manure on pastures. **(Thursday, March 2nd, 2006)**
- **Pasture Management: Becoming a Grass Farmer.** Yes, you can grow grass without weeds and meet your livestock forage needs -even on small acreage. Attend this workshop to develop a pasture management plan, determine the grazing capacity of your pastures, and learn how to manage grazing for optimal pasture production. **(Wednesday, March 8th, 2006)**

Features

The Girls Are Really Doing Their Job!!!

This temporary tarp shelter will be replaced with a small sturdy one approximately 10' x 8' for winter.



Goats can be very entertaining. This group is a mixed breed - and they are all girls.



The girls cleared nearly a half an acre from April to mid-June. The brush was up to 3 feet tall.



Sandy Seigrist of Carnation, WA needed some help removing brush from an area on her horse farm.

She heard about using goats for vegetation management and decided to try it. When she started her search for her 'weed managers' she intended to get maybe 3 goats, however ended up with 5 mixed breed females. She adopted them from a woman who cared for them for several years, but was moving and couldn't take them along.

Mama, Crystal, Marilyn, Babette, and Hannah have been doing their job quite nicely too. When they came to the farm in April of 2005, they were put to the task of eating away about a half acre of brush up to 3 feet high. They accomplished the task by mid-June!

In addition to munching on the grassy space where they hang out, she continues to throw them brush and branches from other areas on the property, a little grain maybe twice a week, and lots of fresh veggies. She will supplement with hay in the winter months. The girls also have free choice mineral/salt available formulated for browser's and grazers.

(Sandy hasn't had to vaccinate them, but it is something many folks do on a yearly basis.)

Their new home seems to agree with them, and Sandy says she enjoys having their sense of humor and wonderful, happy energy on her farm.

For more information on Goat Vegetation Management, call the King Conservation District at 425-277-5581 ext 105.



Sponsors



King Conservation District Contacts

OFFICE: 425-277-5581
EXT. 105

BOARD OF SUPERVISORS

District Chair: Max Prinsen
Vice-Chair: Scott Wallace
Secretary/Auditor: Matt Livengood
Member: Bobbi Lindemulder
Member: Richard Gelb

KCD E-MAIL ADDRESS:

district@kingcd.org

WEB SITE: <http://www.kingcd.org>

These businesses support conservation practices. Thank you sponsors for supporting us in our ongoing programs. To become a sponsor, contact Roseanne Campagna at 425-277-5581 ex 125.

Tom Hanson



**International Forestry
CONSULTANTS, INC.**

11232 120th Avenue NE #201
Kirkland, WA 98033
(425) 822-5915
Fax (425) 822-5975
tom@infoforestry.com
www.infoforestry.com



American Tree Farm Certifying Body

206-949-9867



www.EquineTractor.com

SHRUBS cont'd

Twinberry (*Lonicera involucrata*) A low growing shrub that thrives along streams and other wet areas. Provides excellent erosion control and wildlife habitat.

OceanSpray (*Holodiscus discolor*) Deciduous shrub usually with several main stems to 4m tall: with small pyramidal lilac-like clusters. Grows in dry to moist, open sites.

Indian Plum (*Osmaronia cerasiformis*) Also known as Osoberry, this shrub is one of the first to leaf out in the spring. Great for use along streams and in the back yard.

Salal (*Gaultheria shallon*) A common low growing evergreen understory in our moist woods.



SERVICEBERRY

Holiday Greetings

to all our cooperators and readers
from the staff at the King
Conservation
District!!

