

The Conservation CONNECTION



KING CONSERVATION DISTRICT

WINTER 2007

Promoting sustainable uses of natural resources through responsible stewardship.

15th Annual Bareroot Tree and Shrub Sale

Winter is the time to plan your spring plantings!

Pre-order
NOW
for pickup on
February 29 &
March 1

The King Conservation District offers a variety of native trees and shrubs for conservation purposes such as wildlife habitat, windbreaks, hedgerows, reforestation, wetland and stream

enhancement and erosion control as well as for landscaping around homes and farms. **The plants range in size from 8 inches to 2 feet and are bareroot stock.** This means they do not come in pots or burlap bags, but are harvested from the field in winter when the plants are dormant and are ready to be replanted. Bareroot plants are hardy, have well-developed roots and are easy to handle, transport and plant.

you with large quantities of high quality, affordable bareroot trees and shrubs. See the inside of this newsletter for additional information and an order form.



Red Osier Dogwood

The Red Osier Dogwood was used by Native Americans for medicinal purposes, basket making and drying salmon; the bark was also smoked.



Red Flowering Currant

This Northwest native has spawned ornamental cultivars that are highly prized in Europe.



Inside This Issue

2008 Native Plant Sale

- Order Form
- Plant Sale Information
- Tree and Shrub Descriptions
- Native Plant Project Ideas

Change Service Requested

935 Powell Avenue S.W.
Renton, WA 98057
KING CONSERVATION DISTRICT



TREES - Evergreen

Douglas Fir (*Pseudotsuga menziesii*)

A fast growing conifer found in a wide range of habitats. It reaches 250 feet at maturity and needs well-drained soils and full sun.

Grand Fir (*Abies grandis*)

A popular Christmas tree and important lumber producer, it grows well in both moist and dry conditions. Characterized by downward sloping branches and thick foliage. Max height 250 feet.

Noble Fir (*Abies procera*)

Fast growing, thrives in moist, deep, rich soils and full sun. It is commonly grown as a premium Christmas tree. Max height 250 feet.

Sitka Spruce (*Picea sitchensis*)

A fast growing conifer that grows well along streams and in moist, boggy sites. Stiff, bluish-green needles. Max height 200 feet.

Western Hemlock (*Tsuga heterophylla*)

Common lowland forest evergreen tree. Prefers moist soils. Shade tolerant. The Washington State tree. Max height 200 feet.

Western Red Cedar (*Thuja plicata*)

Slow growing, prefers moist soils. Grows well in the shade. Max height 150 feet.

Shore Pine (*Pinus contorta*)

Highly adaptable. Found in bogs, dunes and rocky hilltops. Rapid growth. Max height 50 feet.

TREES - Deciduous

Cascara (*Rhamnus purshiana*)

A small, deciduous tree. Prefers moist soils. Shade tolerant. Fruit is a valuable food source for a variety of wildlife. Max height 30 feet.

Oregon Ash (*Fraxinus latifolia*)

Moist to wet soils. Will tolerate standing water early in growing season. Deciduous tree, food source for wildlife. Olive-green oval leaves turn yellow in fall. Max height 80 feet.

Vine Maple (*Acer circinatum*)

Dry to wet areas. Provides vibrant fall color, erosion control and "helicopter" winged seeds that are eaten by wildlife. Max height 22 feet.



SHRUBS

Black Hawthorn (*Crataegus douglasii*)

Deciduous thorny shrub with white flowers. Prefers moist soils and open areas. Often found on edges of swamps and streams. Provides excellent nesting sites for birds. Max height 20 feet.

Black Twinberry (*Lonicera involucrata*)

Prefers moist sites and sun. Common at edges of lakes and streams. Produces yellow tubular flowers and purple-black paired fruit. Excellent for wildlife. Max height 5 feet.

Indian Plum (*Oemleria cerasiformis*)

Moist to dry soil, tolerant of fluctuating water table. Common along streams, in forest openings or edges. First native shrub to flower in spring. Provides fruit and nesting habitat for birds. Max height 15 feet.

Mock Orange (*Philadelphus lewisii*)

Wide variety of soil conditions. Showy, fragrant white flowers. Birds eat woody fruit capsules. Max height 10 feet.

Nootka Rose (*Rosa nutkana*)

Dry to moist sites. Red hips eaten by wildlife. Fragrant pink flowers. Max height 9 feet.

Oceanspray (*Holodiscus discolor*)

Grows well in full sun and dry soil. Erect, loosely branched with creamy white clustered flowers. Max height 15 feet.

Pacific Ninebark (*Physocarpus*

capitatus) Deciduous shrub with light tan to dark brown shredding bark. Creamy white flowers visible from a distance. Tolerant of water table fluctuations. Found on streambanks, lake margins, edges of woods. Max height 12 feet.

Red Flowering Currant (*Ribes*

sanguineum) Dry to somewhat moist sites. Chains of pink flowers loved by hummingbirds. Inedible fruit eaten by birds. Max height 12 feet.

Red Osier Dogwood (*Cornus sericea*)

Well drained soils to wet streambanks. Its bright red stems make it stand out during the winter. White clustered flowers. Commonly browsed by deer and elk. Max height 15 feet.

Serviceberry (*Amelanchier alnifolia*)

Prefers well-drained soils and full sun. Produces small white flowers and red edible fruit. Max height 20 feet.

Snowberry (*Symphoricarpos alba*)

Dry to moist sites. Partially shade tolerant. Adaptable shrub with white berries that persist throughout the winter. Max height 5 feet.

Tall Oregon Grape (*Mahonia aquifolium*)

Moist to dry soil. Holly-like leaves and yellow flowers. Birds love the purplish-blue berries. Max height 8 feet.

Thimbleberry (*Rubus parviflorus*)

Prefers moist to dry sites and full sun. Deciduous shrub with upright stems and velvety leaves. White to reddish purple flowers and edible red berries. Max height 5 feet.

GROUND COVERS

Kinnikinnick (*Arctostaphylos uva-ursi*)

Well-drained soils. A low growing groundcover with red berries that provide food for wildlife. Erosion control. Max height 20 cm.

Salal (*Gaultheria shallon*)

Dry soils. Black berries provide wildlife with food. Glossy leaves. Max height 7 feet.

Upcoming Events



Volunteer Opportunities

Garden of Goo

Native plants grown from locally collected seed are the cornerstone of conservation and ecological restoration. Learn about and actively participate in growing native plants for stream and wetland restoration and enhancement projects. Activities include starting plants from seed and cuttings and transplanting and maintaining nursery stock. Activities will occur at the King Conservation District nursery facility in Renton from **9 am – 12 pm**

Scheduled volunteer dates include:

January 11, 12, 25, 26

February 8, 9, 22, 23

Contact Debbie at (425) 277-5581 ext 119 or debbie.meisinger@kingcd.org, for more information on these and other volunteer opportunities.



Free - Workshops on Land and Water Stewardship for Livestock Owners

Do you own horses, ponies, cattle, goats, sheep, pigs or other livestock? The King Conservation District is offering **FREE** workshops on land and water stewardship practices for livestock owners. As a workshop participant you will receive one-on-one guidance from District farm planners and technicians to help you design, construct and implement livestock management practices that can meet your specific needs and circumstances. Attend all four workshops, or only those that meet your needs.

Workshops will be held at the
Issaquah Salmon Hatchery
125 W Sunset Way
Issaquah, WA 98027

Time 6:30 pm – 9:00 pm

You must pre-register...

For more information or to register call
the King Conservation District at
(425) 277-5581 ext. 122
Class size is limited, so register early.

Streams and Wetlands: *Living with Livestock near Water*

Take the plunge and protect your property, water quality, fish and wildlife habitat. Attend this workshop to design a stream or wetland native plant restoration plan. Calculate the length and cost of a livestock exclusion fence for sensitive areas, select native plants suited to stream and wetland buffers, determine plant placement and outline a maintenance plan. **February 21, 2008**

Mud Management: *Record Rainfall – Record Mud*

It's always the right time to prepare for wet weather. Attend this workshop to develop a mud management plan. Design a confinement area for livestock, select footing material, estimate gutter and downspout needs based on barn roof runoff and develop a confinement schedule. **February 28, 2008**

Manure Management: *Got Livestock? Got Manure!*

Discover what's possible based on your finances, time and ability. Attend this workshop to develop a manure composting and utilization plan. Estimate the volume of manure produced by livestock, design and construct livestock manure storage bunkers or compost bins. Develop a plan to spread composted manure on pastures. **March 6, 2008**

Pasture Management: *Becoming a Grass Farmer*

Yes, you can grow grass without weeds and meet your livestock forage needs, even on small acreage. Attend this workshop to develop a pasture management plan, determine the grazing capacity of your pastures and learn how to manage grazing for optimal pasture production. **March 13, 2008**



Rain Garden Handbook for Western Washington Homeowners!

If you're like most people, you probably think any garden in the Northwest would be considered a rain garden. But rain gardens are built specifically to help prevent pollution and flooding. By creating one on your property you'll end up with a beautiful addition to your landscape *and* make a difference!

So, what is a rain garden? A rain garden collects, absorbs and filters stormwater runoff from roof tops, driveways, patios and other areas that don't allow water to soak into the ground.

Rain gardens:

- Are landscaped with plants that fit your yard.
- Have deep, compost-amended soils to soak up and clean runoff.
- Provide habitat for beneficial insects and birds.
- Increase the amount of water that soaks into the ground to recharge local groundwater.
- Help reduce flooding, pollution and erosion in our streams, lakes and Puget Sound.

If you'd like to learn how to build one, we've got a great new guide available to help walk you through each step—and it's free! To get a copy, just contact us at 425-277-5581 ext.105 or district@kingcd.org. You can also stop by our office at 935 Powell Ave SW, Suite D, Renton, WA 98057.

FREE!!! Hedgerow Poster for District Landowners!

Have you heard? The King and Kitsap Conservation Districts, in partnership with the Good Nature Publishing Company, have completed a new poster highlighting the beauty and ecological benefits of native plant hedgerows on the Pacific northwest landscape. Hedgerows of native plant species can provide numerous benefits, including:

- Livestock exclusion from streams and wetlands
- Stream, wetland and water quality protection
- Erosion control
- Fish and wildlife habitat enhancement

Go to http://www.kingcd.org/pub_fis_hed.htm for more information on the value of hedgerows and techniques for establishing hedgerows with native plant species.

A printed copy of the Puget Sound Hedgerows poster is available free of charge to individuals who reside within the boundary of the King Conservation District by visiting our office. The poster is not available by mail through the King Conservation District. The boundary of the District includes most of King County, excluding the incorporated cities of Enumclaw, Federal Way, Milton, Pacific and Skykomish. The poster can be purchased and mailed to an address of your choice by visiting the **Good Nature Publishing Company** at <http://www.goodnaturepublishing.com/>

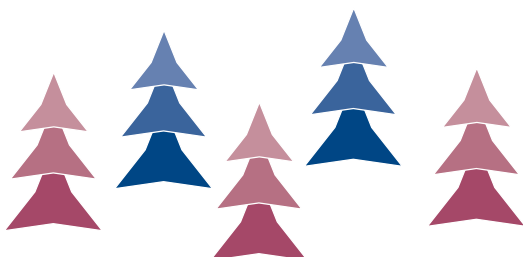


*Get the scoop on poop!
Pet waste is a big issue for both
community health and water quality.
Check out this website for some great
information:*

www.petwaste.surfacewater.info



Puget Sound Hedgerows Poster



2008 Tree and Shrub Sale Order Form



TREES

	<i>Price Per Unit</i>	<i>Quantity</i>	<i>Price</i>
DOUGLAS FIR	10 trees for \$ 6.00	_____	_____
GRAND FIR	10 trees for \$ 6.00	_____	_____
NOBLE FIR	10 trees for \$ 8.00	_____	_____
SITKA SPRUCE	10 trees for \$ 8.00	_____	_____
WESTERN HEMLOCK	10 trees for \$ 10.00	_____	_____
WESTERN RED CEDAR.....	10 trees for \$ 10.00	_____	_____
SHORE PINE	10 trees for \$ 7.00	_____	_____
VINE MAPLE	10 trees for \$ 13.00	_____	_____
CASCARA	10 trees for \$ 14.00	_____	_____
OREGON ASH	10 trees for \$ 14.00	_____	_____

SHRUBS

BLACK HAWTHORN	10 shrubs for \$ 13.00	_____	_____
INDIAN PLUM	10 shrubs for \$ 13.00	_____	_____
MOCK ORANGE	10 shrubs for \$ 13.00	_____	_____
NOOTKA ROSE	10 shrubs for \$ 12.00	_____	_____
OCEANSPRAY	10 shrubs for \$ 12.00	_____	_____
OREGON GRAPE (TALL)	10 shrubs for \$ 13.00	_____	_____
PACIFIC NINEBARK	10 shrubs for \$ 12.00	_____	_____
RED FLOWERING CURRANT	10 shrubs for \$ 13.00	_____	_____
RED OSIER DOGWOOD	10 shrubs for \$ 11.00	_____	_____
SERVICEBERRY	10 shrubs for \$ 12.00	_____	_____
SNOWBERRY	10 shrubs for \$ 12.00	_____	_____
THIMBLEBERRY	10 shrubs for \$ 12.00	_____	_____
TWINBERRY	10 shrubs for \$ 12.00	_____	_____
KINNIKINNICK	10 shrubs for \$ 14.00	_____	_____
SALAL	10 shrubs for \$ 14.00	_____	_____

SubTotal _____

8.9% Tax _____

TOTAL DUE _____

NAME _____

ADDRESS _____

DAY PHONE _____ *Email _____

**MAIL ORDER FORM W/ CHECK PAYABLE TO: KCD 935 POWELL AVE SW Ste D, RENTON, WA 98057.
QUESTIONS? CALL 425-277-5581 Ext. 119 THANK YOU FOR YOUR ORDER!**

** Order confirmations and pickup reminders will be sent out via email. If you don't have email, you will receive a hard copy confirmation in the mail.*

Veterans Conservation Corps

The Veterans Conservation Corps (VCC) Academy at Green River Community College in Auburn started on September 24, 2007. The VCC prepares veterans for employment in the natural resources fields and provides them with skills such as critical areas permitting, water quality monitoring, forestry, wetland delineation, regulations regarding to stream and wetland protection, invasive plant removal, native species identification and planting, plant maintenance, aquaculture techniques, habitat planning, restoration and maintenance, technical report writing and hatchery science. The veterans in the program have also earned CPR/First Aid certificates and Certified Erosion and Sediment Control Lead certificates and are ready for immediate employment.

Besides taking on a full-time college course load, Mark Seery (the VCC Operations Manager at Green River Community College) has been leading the enrollees through a number of habitat restoration projects, working with various agencies to provide hands-on experience. The VCC crews have worked with City of Burien, City of Kirkland, King County WRIA 9, Stilly-Snohomish Fisheries Task Force, the Nisqually Land Trust and Nisqually Tribe, Puget Sound Restoration Fund, People for Puget Sound and the International Marine Association Protecting Aquatic Life (I'M A PAL) Foundation.

The VCC would like to thank the King Conservation District for their technical assistance and unending support. KCD has been instrumental in our success.



*Bringing you the
Agricultural
Conservation
Restoration &
Environmental
information you
need*

*Join local and regional guests
for a lively discussion on Green
A.C.R.E. Radio, a new radio
talk show. Sponsored by the
King Conservation District,
King County Agriculture
Programs, and KBCS-FM, the
show is available online at
www.kbcs.fm*



Composting Class in Redmond

The City of Redmond is offering a Composting for Horse Stables and Small Farms workshop on March 8, 2008 at Farrel-McWhirter Farm. This workshop is an opportunity to learn about composting livestock manure and see the new aerated compost facility at the farm. The full class description is available in the City of Redmond recreation guide. Call (425) 556-2300 to register or visit www.redmond.gov



The VCC Crew

Plant Sale Information



Orders will be taken until February 8, 2008 but please order early. Quantities are limited!

BY MAIL:

Simply fill out the order form and mail along with a check payable to:

King Conservation District
935 Powell Ave. SW, Suite D
Renton, WA 98057

IN PERSON:

Come to our office Monday through Friday 8:00 am to 4:00 pm

PAYMENT:

All orders **must** be prepaid with cash or check to secure your order. A purchase order is also acceptable for agencies, businesses and non-profits. We cannot accept credit cards.

PLANT PICK-UP:

Friday February 29 and Saturday March 1, 2008

Plant pre-orders will be available for pickup at our Renton office. An order confirmation will be emailed or mailed to you and will contain the specific details on when and where to get your plants.

*** We will have additional plants available for sale at time of order pickup.**

PLANT SIZES:

Plants are 1 to 2 years old and range in size from 8 inches to 2 feet and come bareroot. Salal and kinnickinnik are smaller "plugs."

QUANTITIES:

All plants come in bareroot bundles and are sold in groups of 10. This is for ease of handling and simplicity in filling orders.

AVAILABILITY:

All plants are sold on a first-come, first-serve basis. Quantities are limited and some species always sell out so please order early.

*** If we cannot fill part or all of your order, a plant substitution will be offered.**

SURVIVABILITY:

Generally, mortality should be no more than 10-20 percent.

QUESTIONS:

Questions about specific plants? Can't find what you are looking for? We can direct you to other local nurseries that sell native trees and shrubs.
Call 425-277-5581 ext.119 for more information.



Check out these sources for more information on native plants!

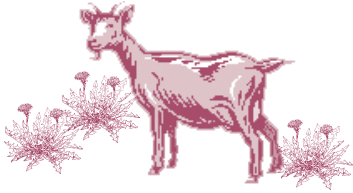
Washington Native Plant Society is a non-profit group dedicated to conserving and studying native flora. They offer a stewardship program, education and plant sale. (206) 527-3210 or www.wnps.org

*Books: Plants of the Pacific Northwest Coast by Pojar & MacKinnon
Landscaping for Wildlife by Russell Link*

Features



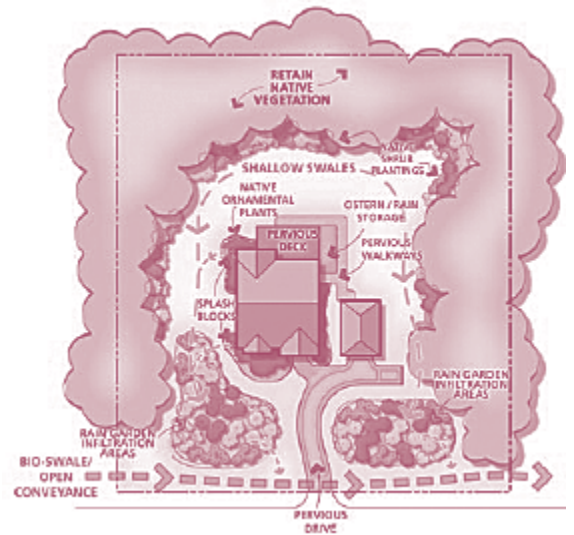
Low Impact Development "LiD" What is it?



Low impact development, often referred to as "LID" is a land development approach that emphasizes the minimization of land clearing and disturbance activities and the integration of small-scale ponds, swales and rainwater dispersment systems into the landscaped portions of lots.

Protection of soils and vegetation maintains the natural ability of the land to soak up rainwater and runoff, reducing the need for large, expensive stormwater facilities. LID drainage practices and systems collect, cleanse, meter, infiltrate and convey stormwater to a public natural drainage system or storm sewer. When properly implemented, the LID approach to development, with its low impact drainage systems protect both the environment and property owners from excessive impacts related to residential development.

In the LID approach to development and drainage, hydrology is a central design consideration that is integrated into the planning and design phase of land development. Using hydrology as the basis for design begins by identifying and preserving on-site hydrologic processes, patterns and physical features like streams, wetlands, native soils and vegetation. The LID plan shown above incorporates many of the common practices associated with low impact development.



LID plan with conservation and drainage components (PSAT Low Impact Development Manual)

King Conservation District Contacts

OFFICE: 425-277-5581
EXT. 105

BOARD OF SUPERVISORS

District Chair: Matt Livengood
Vice-Chair: Scott Wallace
Secretary/Auditor: Bill Knutsen
Member: Bobbi Lindemulder
Member: Bob Vos

KCD E-MAIL ADDRESS:

district@kingcd.org

WEB SITE: <http://www.kingcd.org>

Address: 935 Powell Ave SW, Ste D,
Renton, WA 98057

King Conservation District is a subdivision of state government created to promote the wise use of natural resources. Board meetings are held on the second Monday of each month at our office. The public is encouraged to attend.

Materials contained in this publication may be reprinted with credit given to the *Conservation Connection*, King Conservation District.

Editors: Geoff Reed & Jessica Paige

Holiday Greetings

to all our cooperators and readers

from the staff at the King

Conservation

District!!

