



KING CONSERVATION DISTRICT FUNDING INVESTED IN THE TOWN OF YARROW POINT

GRANT AWARDS KCD awards grants to local governments, nonprofit organizations, tribes, and other agencies to improve natural resources and increase regional conservation. KCD funds for projects listed below were collected from an annual, per-parcel assessment or rate and charge for projects in partnership with Member Jurisdictions and/or the three watershed forums. These monies support high-impact projects in both urban and rural areas and often leverage funding from state, federal, and other sources. For more information on these projects or about the grant programs, please contact Jessica Saavedra at 425-282-1906 or e-mail Jessica.Saavedra@kingcd.org.

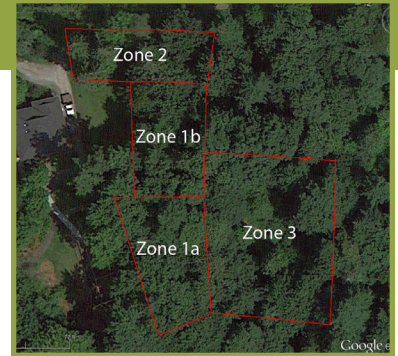
SERVICES In addition to the conservation services and cost share awards listed below, KCD also provides services to cities and residents in shoreline restoration, community agriculture and urban forestry.

www.kingcd.org



KCD–Yarrow Point Member Jurisdiction Grants Awarded

In 2012, the District awarded a joint grant to the Towns of Hunts and Yarrow Point for \$13,656. \$9,357 of the grant award is funded with assessments from the Town of Yarrow Point. The grant will help the two communities collaborate on restoration efforts and will result in invasive plant removal and native plantings in Weatherill Nature Preserve and Morningside Park (photo right). Morningside Park is a 7.8 acre park located in the Town of Yarrow Point and along the shores of Lake Washington. The goal for the project is to work in zones with high invasive coverage and low native plant diversity. With the help of the Friends of the Cedar River Watershed, the Towns will foster community-supported invasive plant removal to reestablish native habitat areas. They hope to remove 2.5 acres of invasives and brush piles, salvage Maple trees, add mulch, and plant more than two hundred native plants.



Summary of KCD–Yarrow Point Member Jurisdiction Funding Available for Grants or Services

2013-2016 Assessment/Rates and Charges Collections	\$3,010.98
2017 Rates and Charges Collections	\$758.16
Total Collections	\$3769.14
Total Utilized to Date (since 1994)	\$9,357.00
Amount Available Today to Utilize for Grants or Services as of 6/28/18	\$4,866.10
Estimated 2018 Rates and Charges Collections	\$ 750.00
Estimated Total Amount Available to Utilize for Grants or Services (including estimated 2018 collections, subject to change)	\$4,866.10

Conservation Services

KCD provides services to land managers, cities and other organizations. Examples of KCD-contracted services includes project management and design, engineering, native bare root plants, fresh water and marine riparian and wetland habitat projects. For more information visit our website or contact Brandy Reed at 425-282-1924 or Brandy.Reed@kingcd.org.

Landowner Incentive Program (LIP) Cost-Share Awards

KCD supports conservation practices on private property by providing financial support to land managers who purchase and install mechanisms that promote conservation. Expenses associated with pre-approved conservation practices are matched with LIP cost-share funding at a ratio of 50 to 90 percent of the total cost of projects. For more information visit our website or contact Alex Martinsons at 425-282-1951 or Alex.Martinsons@kingcd.org.

Regional Food System Grants

This KCD program seeks to fund projects that contribute to the economic viability of local farms, encourage new farmers to expand acreage in food production, improve food access and increase demand for King County farm products. For more information visit our website or contact Mary Embleton at 425-282-1958 or Mary.Embleton@kingcd.org.

Year	Organization	Project	Funds Awarded
2015	City of Seattle, Office of Sustainability and Environment	King County Farmers Market Access Coordination	\$49,086
	Cascadia Cooperative Farms	Pasture Raised Poultry and Egg Cooperative Start-Up	\$80,000
	Northwest Agriculture Business Center	Food Hub Development for King County Farmers	\$95,000
	Highline College	Urban Agriculture/Agroforestry/Food Security	\$80,000
	SnoValley Tilth	Experience Farming Project (EFP) Infrastructure Upgrades	\$13,295
	King County WLRD Agriculture Program	Beefing Up Infrastructure Needs for King County USDA Meat Processing	\$120,000
	Snoqualmie Valley Preservation Alliance	Launching a Successful Watershed Improvement District	\$95,650
	Washington State University	Growing Potential: Bringing WSU Extension Expertise to King County Farmers	\$99,852
	HumanLinks dba 21 Acres	A Hedgerow Trial to Attract Beneficial Insects to Farm Edges	\$12,995
2016	Delridge Grocery Cooperative	Linking Local Producers to an Urban Food Desert Market	\$100,000
	Forterra	Expanding Healthy Food Access in South King County through Wellness Hubs	\$90,718
	Northwest Agriculture Business Center	Cooperative Development and Planning for Value-Added Infrastructure	\$100,000
	City of Seattle, Office of Sustainability and Environment	Strengthening Farmers Market EBT/Fresh Bucks Access in King County	\$100,000
	Tilth Alliance	FarmLink: Connecting Farmers with Land and Landowners with Farmers	\$57,400
	South King County Food Coalition	Elk Run Farm	\$50,047
	Vashon Maury Island Land Trust	Matsuda Farm Startup Project	\$50,000
	Vashon Island Growers Association	Order & Pick-Up Smartphone App	\$41,300
	VIVA Farms and SAgE	SAgE Sammamish Valley Student Farm & Viva Farms Metro Farm Incubator	\$100,000
	WSDA	Bridging the Gaps Workshops for King County Produce Growers	\$38,648
	WSU King County Extension	WSU Extension on Demand	\$54,735
2017	Pike Place Market Foundation	Pilot Individual Development Account Program for Beginning Farmers	\$16,050
	Goose and Gander Farm	Addressing the Farm Infrastructure Gap	\$99,919
	SnoValley Farmers' Cooperative	The SVFC Market Boost Project	\$82,811
	Lily Gottlieb-McCale	Shared Soil	\$27,546
	Public Health-Seattle KC	Gathering Around the Table for 'Dulet' - Building a Safe Meat Supply Chain by/for the E. African Comm.	\$97,500
	SnoValley Tilth	Growing Farm Businesses	\$54,581
	King County DNRP	Working Farmland Partnership Pilot Project	\$99,558
	Food Innovation Network	Creating a Replicable & Scalable Pathway for South King County Urban Agriculture	\$53,539
	Highline College	Community-Centered Urban Agriculture Program	\$75,902