

KING CONSERVATION DISTRICT

Board of Supervisors

Meeting Minutes

December 11th, 2017

Supervisors Present: Dick Ryon – Chair, Burr Mosby – Vice Chair, Bill Knutsen – Auditor, Max Prinsen

Associate Supervisors Present: Nancy Tosta, Jason Salvo (Sno-Valley Tilth)

Guests Present: Sarah Richards (WACD), Kathleen Farley,

Staff Present: Bea Covington, Ava Souza, Brandy Reed, Josh Monaghan, Deirdre Grace, Rachel Konrady, Emmett Wild, Mary Embleton, Paul Borne, Matt Maria, Emily Carlson

Preliminary Matters:

Meeting called to order at 5:03 pm by Dick Ryon. All attendees introduced themselves. Ryon asked for additions or corrections to the current agenda. Hearing none, the

Knutsen moved; Prinsen seconded passed unanimously a motion to approve the agenda (4 ayes, 0 nays)

Consent Agenda:

Ryon read the consent agenda items aloud and all items were voted on.

Board Minutes: 11.13.17

KCD LIP Applications: None.

Member Jurisdiction Grant Applications: None.

Knutsen moved, Prinsen seconded passed unanimously a motion to approve the consent agenda (4 ayes, 0 nays)

Public Comment: Opened at 5:07. Closed at 5:08pm.

Pulled Consent Agenda Items: None.

The presenter was late and Ryon moved onto Unfinished Business.

Unfinished Business:

AI 17-087: LIP Application and agreement for award of calendar year 2018 cost-share funding – Reed

Reed presented the updated LIP application. There are copies of the proposed revised copies in the board packets. The updates are intended to clarify and update the current LIP applications. The flow of information has been streamlined for clarity. The terms of the contract are within the agreement and landowners must now initial all contract elements to demonstrate their recognition of those contract elements. Information about the sale of land on KCD projects has also been updated.

KCD LIP projects do not put any notice on the title of the property. This action does not change that fact, but it further outlines what could happen if a property with an LIP practice changes ownership. There is interest in revisiting the discussion of placing notice on the title of properties where KCD has implemented LIP projects in partnership with the landowner.

Additionally, there are updates regarding monitoring of sites and photographing of projects.

Knutsen moved; Mosby seconded passed unanimously a motion to approve AI 17-087: A motion to adopt the attached updated Landowner Incentive Program Application and Agreement effective January, 1st 2018 to be used in association with award of District financed cost-share funding (4 ayes, 0 nays).

AI 17-088: Regional Food System Grant Awards: Snoqualmie Valley Farmers Cooperative, Market Boost Project - Embleton

Embleton reviewed the previous work on this agenda item. Additional information had been requested by the Board from the Sno-Valley Co-Op to move forward with the grant award process. Salvo summarized some of the challenges that Sno-Valley Tilth has overcome through the year. The Co-Op has undergone financial streamlining and will be growing the CSA program.

A question was raised on how Board Members are elected to the Sno-Valley Tilth. Three new board members have recently been voted onto the board, bringing the total board members to seven. All board members are voted into their positions on Sno-Valley Tilth.

The goal of the program is to reach 300 CSA members by 2020. Infrastructure changes and updates will occur to assist with this growth. A question was raised about CSA competition with local, individual farmers sale of produce. Salvo responded that there is a rapid growth in the Seattle area and there will be more people interested in fresh, CSA food. The grant Sno-Valley Tilth is applying for through KCD is designed to assist with marketing and outreach, allowing Sno-Valley Tilth to take advantage of this emerging market.

Knutsen moved; Mosby seconded passed unanimously a motion to approve AI 17-088: A motion to award 2017 KCD Regional Food System Grant funding in the amount of eighty-two thousand eight hundred ten dollars and eighty-six cents for the Snoqualmie Valley Farmers Cooperative Market Boost Project. (4 ayes, 0 nays).

Finance:

AI 17-086: A motion to approve check numbers 19988 through 20089 for a total of \$407,617.44 non-payroll EFT's totaling \$187.65 Bank Fees of \$33.00 and November 2017 payroll for \$200,763.67 – Souza

Souza presented the finance report for the month of November in 2017. The deposit for rates and charges went through this month and KCD is on track to receive the projected funds for the year.

The State Auditor will be on-site this month. Knutsen recognized the efforts and work of Souza and her team.

Knutsen moved; Prinsen seconded passed unanimously a motion to approve AI 17-086 check numbers 19988 through 20089 for a total of \$407,617.44 non-payroll EFT's totaling \$187.65 Bank Fees of \$33.00 and November 2017 payroll for \$200,763.67 (4 ayes, 0 nays)

Presentations: Agricultural Land Use – Ted Sullivan

Please see the attached slides in addition to this written account.

Monaghan introduced the team from King County presenting information about the state of Agricultural Land in King County. The presentation will be videotaped for staff to view later.

The team reported on the survey of the agricultural land in King County. This land assessment was completed using funds from KCD's Regional Food System Grant program. Land was broken into farmed, farmable, and unfarmable categories. Within the farmed land, land was broken into food producing and non-food producing land.

Overall, 57% of the land within King County's Agricultural Production Districts farmed. About 8% of the APD land surveyed is considered farmable but is unfarmed.

According to the preliminary results, approximately 5,000 acres of land within King County are farmable but unfarmed (therefore has the potential to be farmed in the future). Areas outside the APD represent about 41% of King County agriculture. Soil conditions were not assessed in this project.

Soil maps and other natural resource analysis will inform the next steps for the survey. Drainage is a continuing problem for many properties. Additional analysis could add information about what percentage of these farmable but unfarmed lands are privately or publicly held.

A break was called from 6:30pm to 6:50pm.

New Business:

Knutsen moved; Prinsen seconded passed unanimously a motion to approve AI 17-89: a motion to amend the agenda of the December 11th, 2017 Board of Supervisors meeting to allow Rick Reinlasoder to address the board. (4 ayes, 0 nays).

Discussion – Rick Reinlasoder

Reinlasoder updated the Board on the Bonami Estate. Walter Bonami is now a limited guardian of the estate. Guardianship Services of Seattle is the legal guardian of the Bonami estate. The legal documents have been transmitted to the KCD's Jay Mirro, who is the Bonami estate farm planner.

The Board of directors will reach out to Jay Mirro and collect copies of the documents for further review.

Reed clarified that the funding for the Bonami bridge project has been set aside. The money sits in the restricted account until the proper documentation can be produced and the project is documented to follow NRCS standards. KCD has two agreements with Walt Bonami, who was the representative of the Bonami estate until recently, they are: a \$50,000 pilot project agreement and an additional \$40,000 LIP cost-share award. The project must be completed and finished, then KCD's funds can be dispersed. KCD will need to know who the agreement will transfer to, should Walter Bonami be no longer the legal guardian of the estate.

Reinlasoder will communicate with Covington in the future and transit copies of documents to her.

Executive Director Update – Covington

Legislative Days

Legislative Days are set for February 5th and 6th, 2018.

NAACD Meeting

133 Covington asked that all Board members interested in joining this meeting contact her as soon as
134 possible. Early registration is closing on Friday December 15th. The meeting will take place at the
135 end of January.

136

137 *KCD Annual Celebration*

138 This meeting January 25th at the Brightwater Center. The Advisory Committee annual event and
139 the KCD annual celebration have been combined into one meeting to increase attendance. It will
140 be open-house style event showcasing KCD's accomplishments in 2017.

141

142 *KCD annual awards*

143 Staff has nominated award recipients and award nominees will be notified soon. Board members
144 should be ready to nominate potential award recipients.

145

146 *King County Council*

147 Heidi Popochock is the new staff liaison to KCD for the King County Council. She is replacing
148 Christine Jensen.

149 *Board Procedures Update*

150 Covington will begin soliciting additional input from Board members to add topics to the board
151 agenda before meetings. Board members will receive invitation emails from Covington and they
152 can request items to be included on the agenda.

153

154 Chair of the Board Update – Ryon

155 *Sexual Harassment*

156 The KCD Board participates in an annual harassment and inclusivity trainings, as do all KCD staff
157 and managers. Ryon expressed interest and concern in increasing awareness and preventative
158 measures around these sensitive issues.

159 Covington will reach out to legal counsel to ensure that all policies are as protective of staff as
160 possible. In addition to regular harassment training, Covington has scheduled a training to provide
161 examples of constructive communication. There are also additional operational procedures being
162 put in place which increase safety of staff in the field.

163

164 Discussion with Sarah Richards – WACD Area Representative

165 Richards is the Area Director for the WACD; she is also on the Whidbey Island CD Board of
166 Directors. Area Directors are the liaison among Conservation Districts, and the Washington
167 Association of Conservation Districts. Area Directors also report to the Board of the WACD.

168 This is a volunteer position, Richards donates her time to support conservation districts and their
169 natural resource efforts. She is here to be a resource to KCD and the other CDs in this Area.
170 Minutes from area meetings (although unofficial) will now be transmitted from Richards to CDs.

171 Kathleen Farley introduced herself to the board. She is a professor at University of San Diego.

172 Richards updated the Board on the conversation about sustainable funding occurring at the
173 WACD. The issue of how state funding processes would affect local conservation district funds
174 remains to be resolved. Six options were put forth and the committee has decided to take a year to
175 debate and process these issues. Issues of how to communicate the story of conservation within
176 Washington state remain and can be a barrier for achieving state-level conservation funding.

177 Beginning conversations by asking what communities need and looking for points of intersection
178 within those community needs may be a good place to develop these conversations about
179 conservation across the whole state. Communication remains a powerful tool for keeping the
180 public informed on the work of Conservation Districts and aggregating common toolkits and
181 resources allow smaller CDs to take advantage of these common resources.

182 One idea that was raised was combining the WACD meeting and WADE meetings. This could
183 allow additional communication and cross-pollination of ideas. Ideally, every District Supervisor
184 who wanted to participate in the WACD meetings could join without the issue of cost.

185

186 **Prinsen moved; Mosby seconded passed unanimously a motion to adjourn the meeting at**
187 **8:07 pm (5 ayes, 0 nays)**

188

189

190 Authorized Signature

Date

191

Summary of Motions

192 **Knutsen moved; Prinsen seconded passed unanimously a motion to approve the agenda (4**
193 **aves, 0 nays)**

194 Knutsen moved, Prinsen seconded passed unanimously a motion to approve the consent
195 agenda (4 ayes, 0 nays)

196 Knutsen moved; Mosby seconded passed unanimously a motion to approve AI 17-087: A
197 motion to adopt the attached updated Landowner Incentive Program Application and
198 Agreement effective January, 1st 2018 to be used in association with award of District
199 financed cost-share funding (4 ayes, 0 nays).

200
201 Knutsen moved; Mosby seconded passed unanimously a motion to approve AI 17-088: A
202 motion to award 2017 KCD Regional Food System Grant funding in the amount of eighty-
203 two thousand eight hundred ten dollars and eighty-six cents for the Snoqualmie Valley
204 Farmers Cooperative Market Boost Project. (4 ayes, 0 nays).

205 Knutsen moved; Prinsen seconded passed unanimously a motion to approve AI 17-086 check
206 numbers 19988 through 20089 for a total of \$407,617.44 non-payroll EFT's totaling \$187.65
207 Bank Fees of \$33.00 and November 2017 payroll for \$200,763.67 (4 ayes, 0 nays)

208 Knutsen moved; Prinsen seconded passed unanimously a motion to amend the agenda of the
209 December 11th, 2017 Board of Supervisors meeting to allow Rick Reinlasoder to address the
210 board. (4 ayes, 0 nays).

211 Prinsen moved; Mosby seconded passed unanimously a motion to adjourn the meeting at
212 8:07 pm (5 ayes, 0 nays)

213



2017 King County Agriculture Land Use and Infrastructure Assessment

Farmland Data Specialists: Makie Matsumoto-Hervol,
Ben Larson, and Sara Rocero-Barrett

Department of Natural Resources & Parks -
Water and Land Resources Division

November 2017

Land Use Survey Team

Makie

Field technician

WWOOF Japan, Uganda Kibale farming GIS

Sara

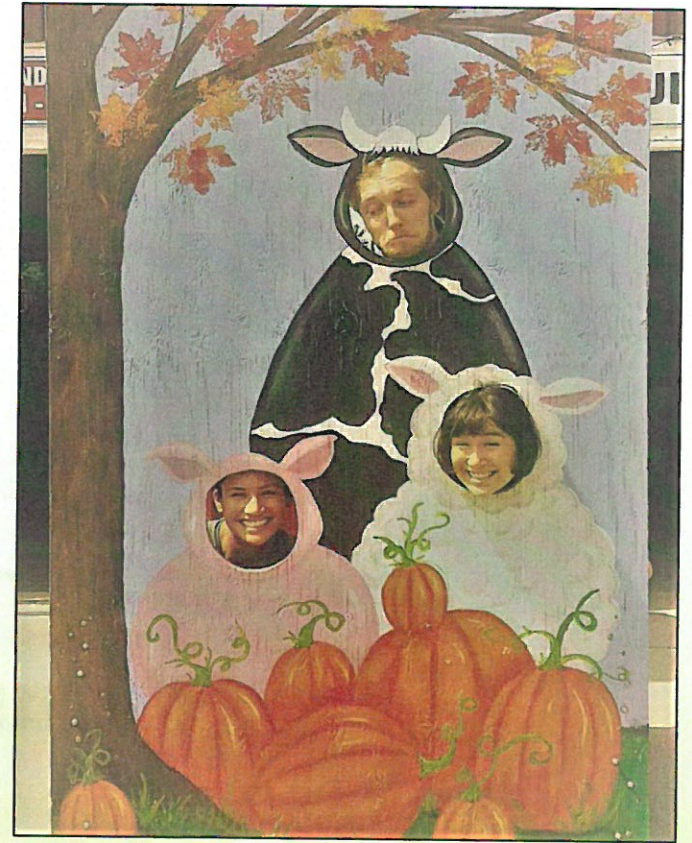
Recently graduated UW Bothell

Air Force Veteran

Ben

Recently graduated WWU

Water rights in Whatcom County

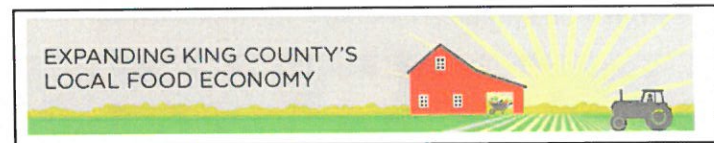


Rockridge Orchard and Cidery in Enumclaw.
*All photos taken by us in the field, unless
otherwise stated*

Project Overview

Assess all agricultural land and infrastructure in King County to:

- Update agriculture land use database
- Create inventory of agricultural infrastructure
- Identify farmable, but unfarmed land



Kent, outside of the APDs

Local Food Initiative

The Local Food Initiative aims to:

- Improve access to healthy, affordable food
- Expand local food economy
 - Increase farmed acreage by 4,000 acres over 10 years
 - Increase number of new and beginning farmers by 25 per year



Retrieved from: SAgE- sustainable agriculture education Facebook page

General Survey Approach

Within Agricultural Production Districts:

- Mapped all land and infrastructure

Outside the APD:

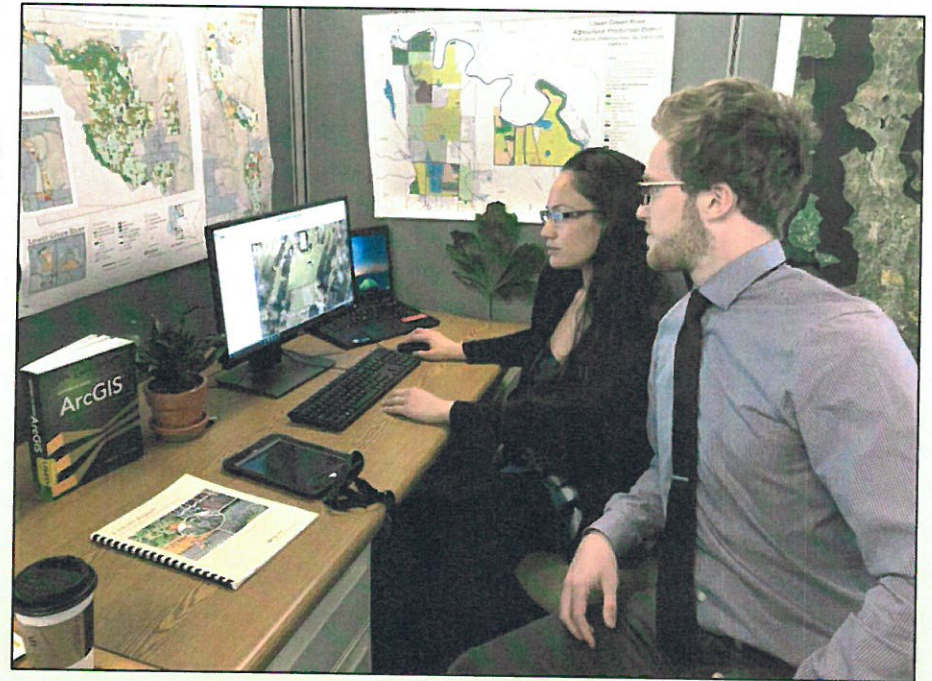
- Mapped agriculture land use only
- Exclusively mapped barns and equestrian infrastructure



King County horse pasture

Methods

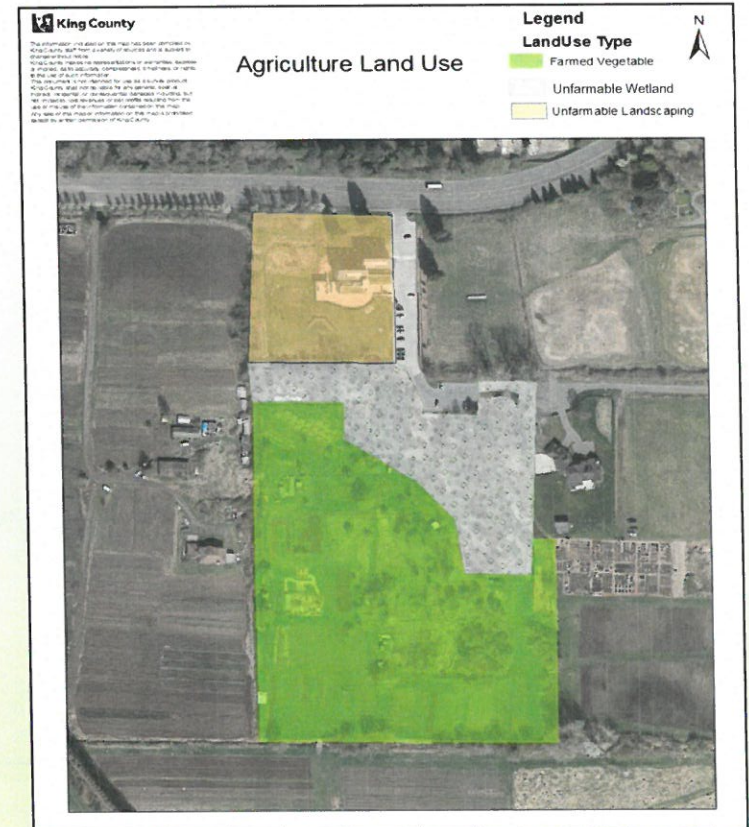
- Mirrored WSDA and 2013 KC surveys
- Windshield surveyed and ground-truthed from public roads
- Data collection with iPads, rangefinder, and binoculars
- Aerial photography 1998-2017



King Street Center, farmland data specialists cubicle

Land Use Classifications

- 44 land use classifications
- 3 major categories
 - Farmed
 - Farmable
 - Unfarmable
- Captured land larger than ½ an acre
- For multi-farmed parcels focused on primary use



21 Acres Farm, 2015 aerial photo with land classifications

Definitions

Farmed: Evidence that agricultural land is in production.

- Active production
- Indirect evidence
 - Recent signs of grazing
 - Animal Feces



Covington, outside of the Upper Green APD

Definitions

Food Producing: Farmed land used to produce food.

- Cattle
- Vegetable
- Berries



Retrieved from: SAgE- sustainable agriculture education Facebook page

Definitions

Non-Food Producing: Farmed land used to produce non-food products.

- Tree Farms
- Flowers
- Horses



Retrieved from: King County photo stock

Definitions

Farmable, but Unfarmed: Land that appears suitable for farming but has not been actively managed in the past three years.

- Unmanaged grasslands
- Idle cropland



An idle farm in northern Enumclaw APD

Definitions

Unfarmable: Land that is unlikely to be farmed.

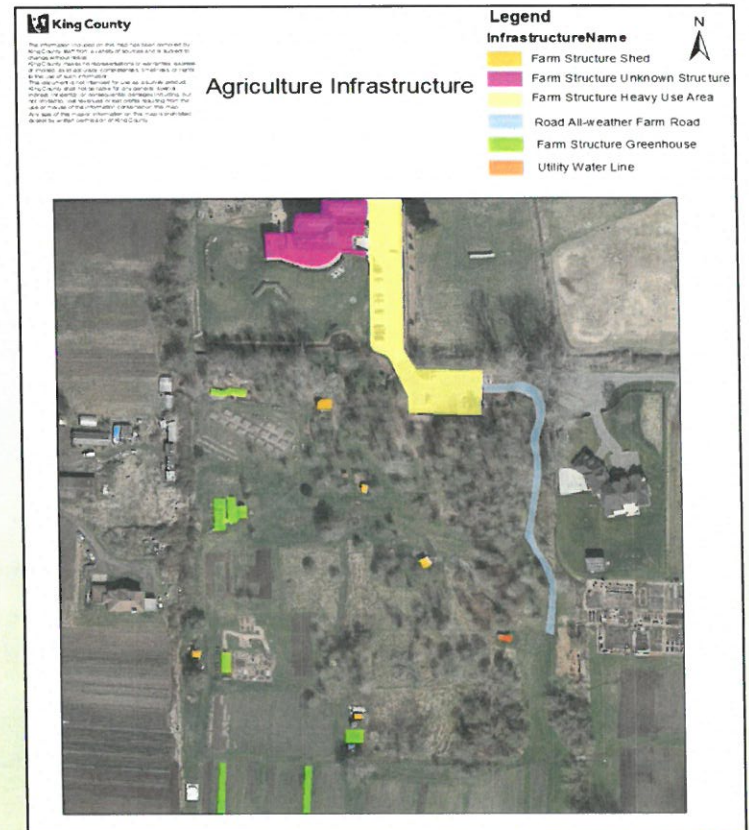
- Sports and Recreation
- Wetlands
- Landscaped areas



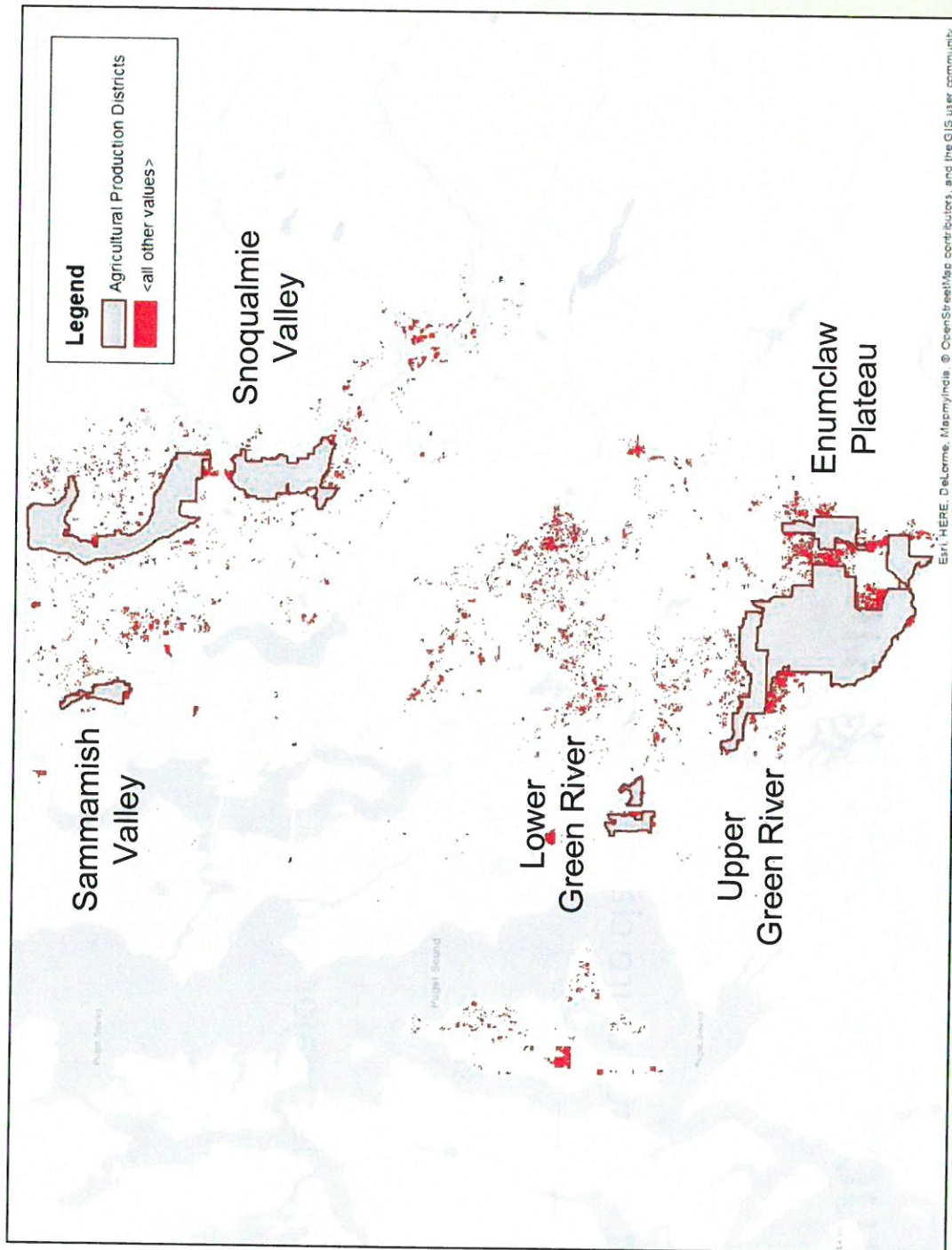
Wildlife area in southwestern Snoqualmie APD

Infrastructure Classifications

- 31 infrastructure classifications
 - Barns
 - Farm stands
 - Stables
- Excludes major roads



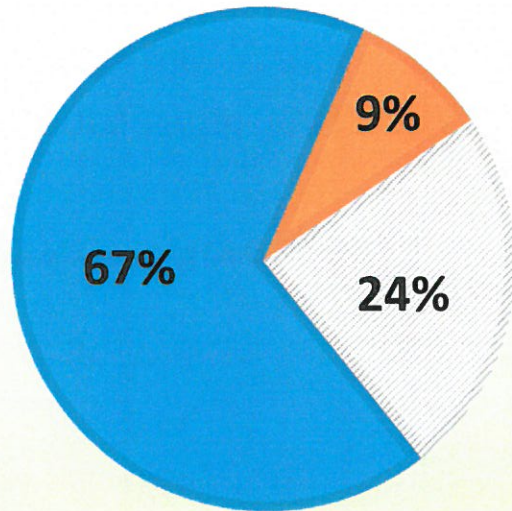
21 Acres farm, 2015 aerial photo with infrastructure classifications



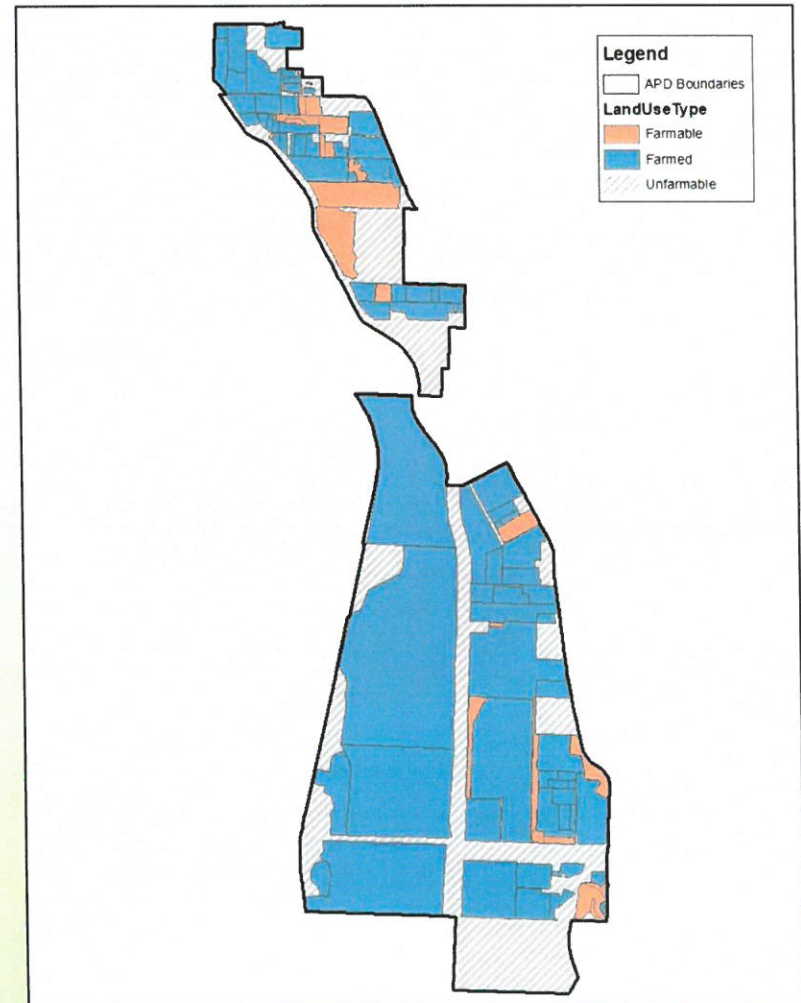
Sammamish River APD

Acreage: 1,083

SAMMAMISH APD



■ Farmed ■ Farmable ▨ Unfarmable



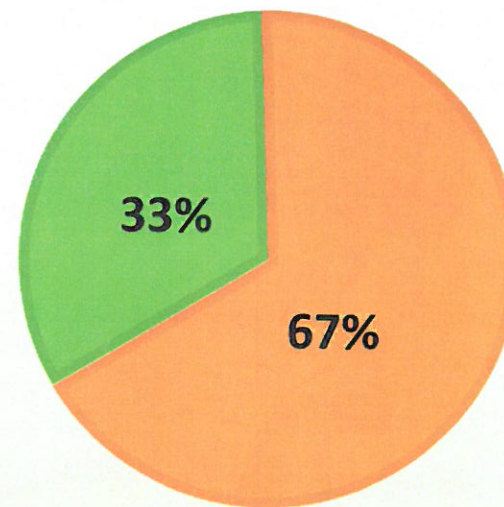
Sammamish River APD

Acreage: 1,083

Top Farmed Acreage:

1. Commercial Turfgrass
2. Vegetable
3. Nursery

SAMMAMISH APD

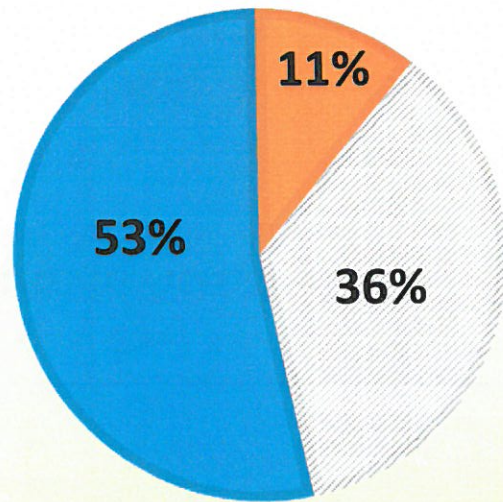


■ Food ■ Non Food

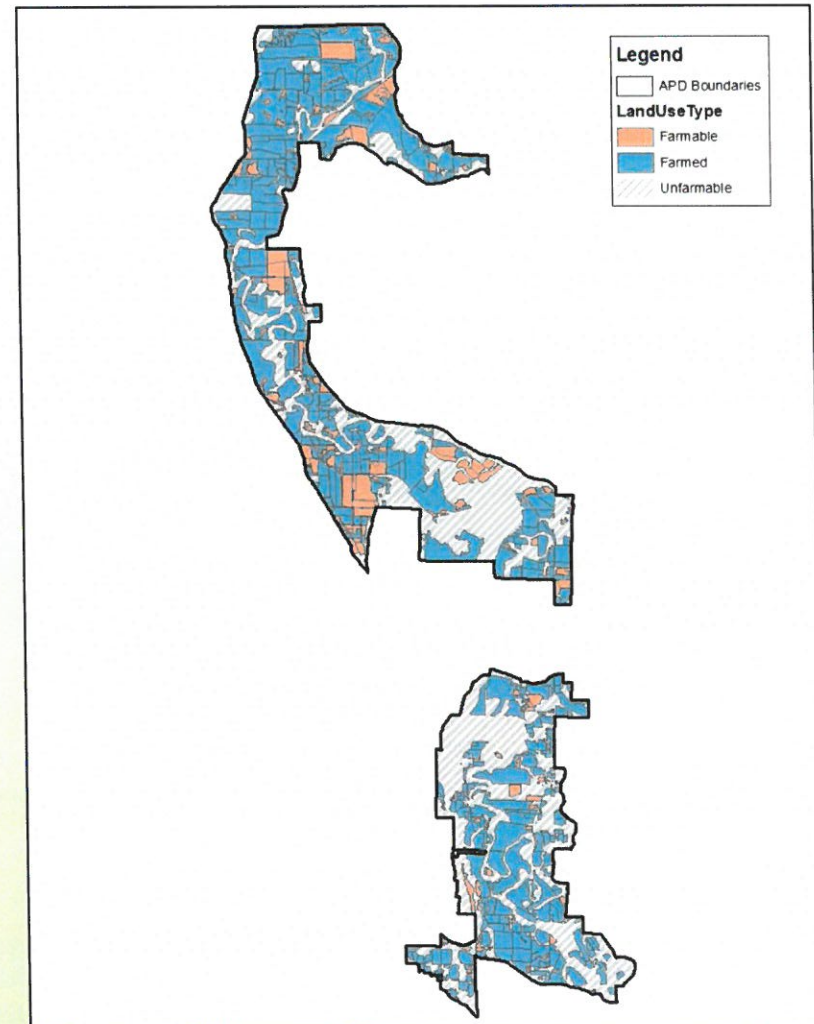
Snoqualmie River APD

Acreage: 14,560

SNOQUALMIE APD



■ Farmed ■ Farmable ▨ Unfarmable



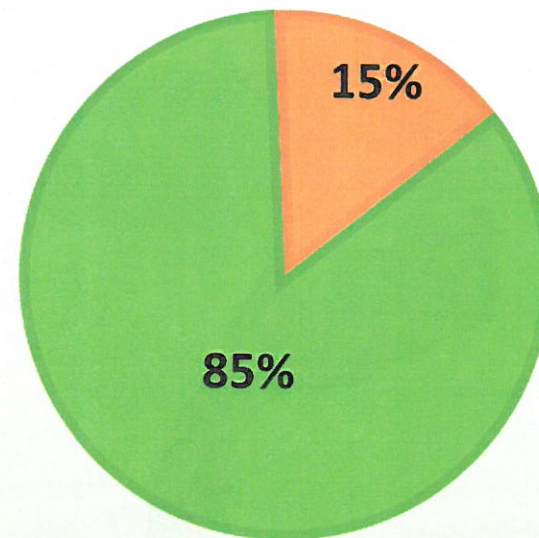
Snoqualmie River APD

Acreage: 14,560

Top Farmed Acreage:

1. Cattle
2. Hay/Silage
3. Managed Grassland

SNOQUALMIE APD

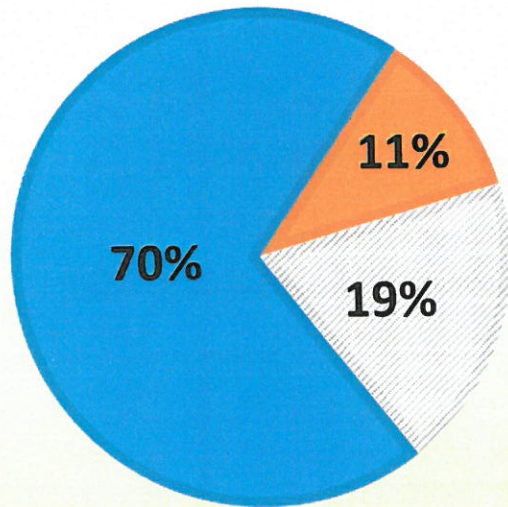


■ Food ■ Non Food

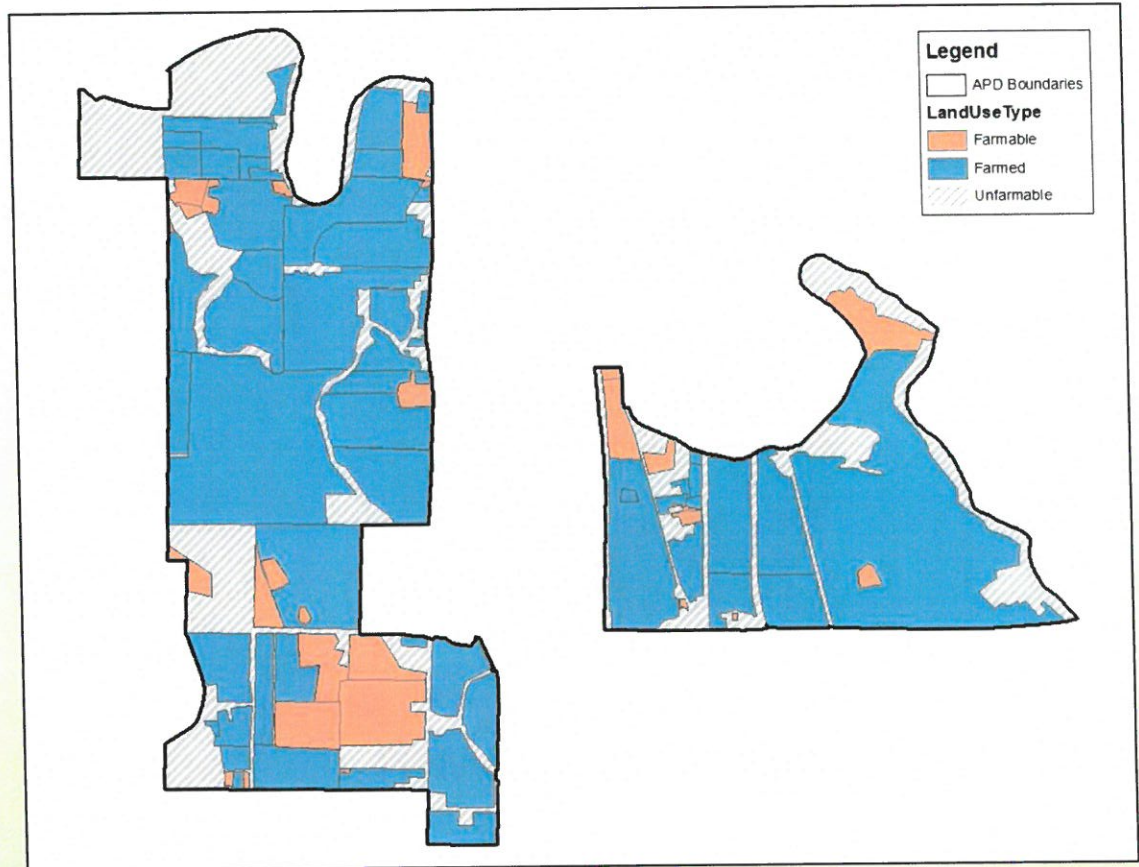
Lower Green APD

Acreage: 1,403

LOWER GREEN APD



■ Farmed ■ Farmable ▨ Unfarmable



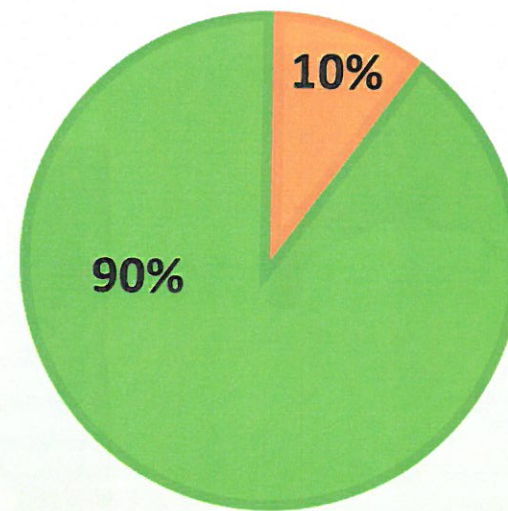
Lower Green APD

Acreage: 1,403

Top Farmed Acreage:

1. Vegetables
2. Cattle
3. Nursery

LOWER GREEN APD

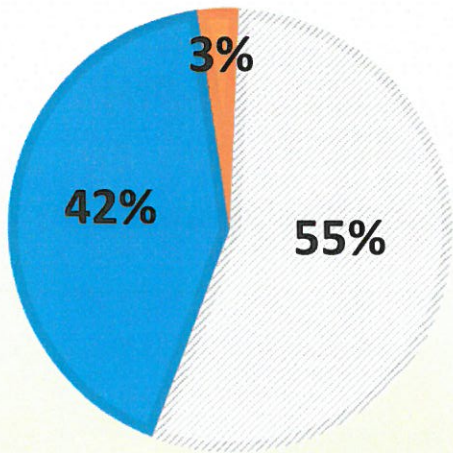


■ Food ■ Non Food

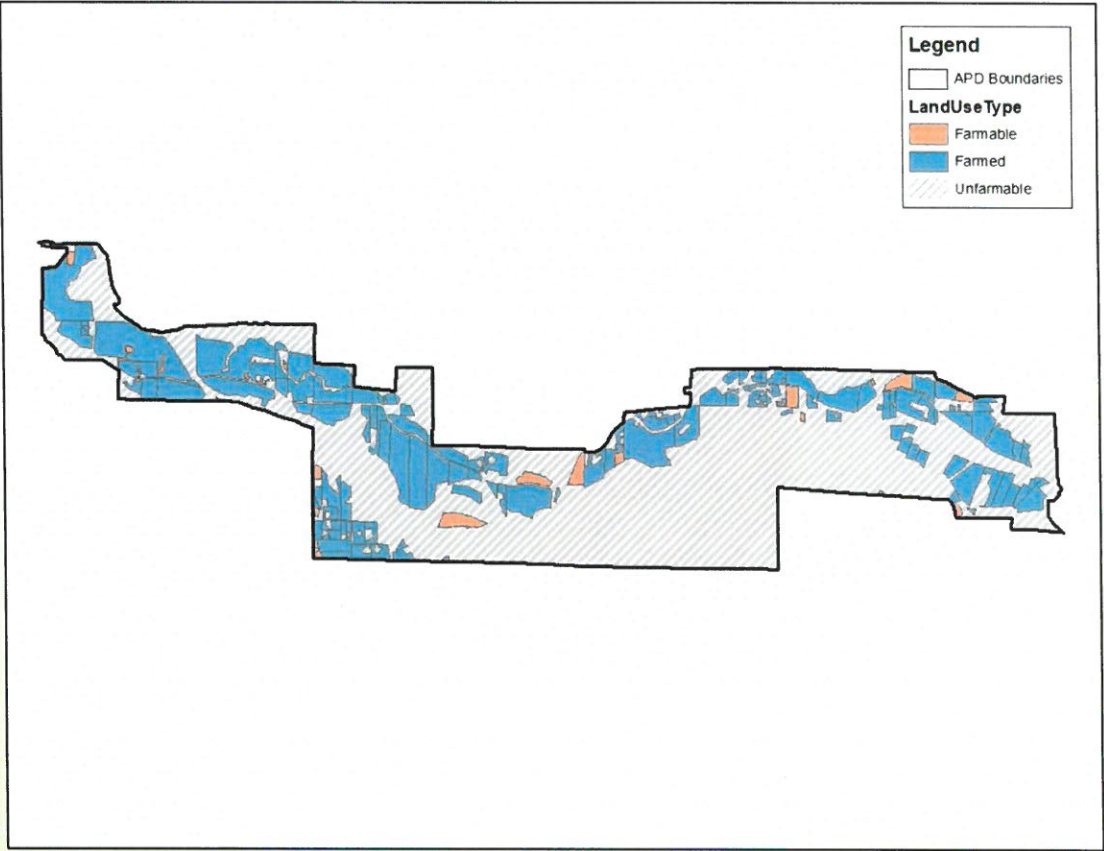
Upper Green APD

Acreage: 3,500

UPPER GREEN APD



■ Farmed ■ Farmable ▨ Unfarmable



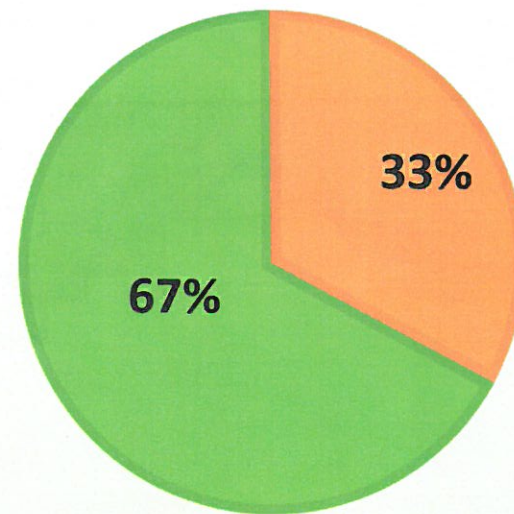
Upper Green APD

Acreage: 3,500

Top Farmed Acreage:

1. Horse
2. Vegetable
3. Cattle

UPPER GREEN APD

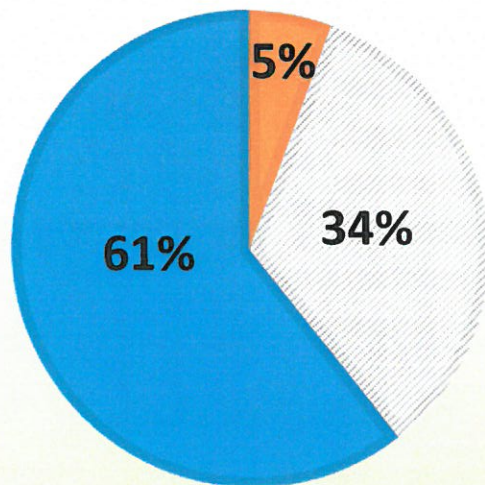


■ Food ■ Non Food

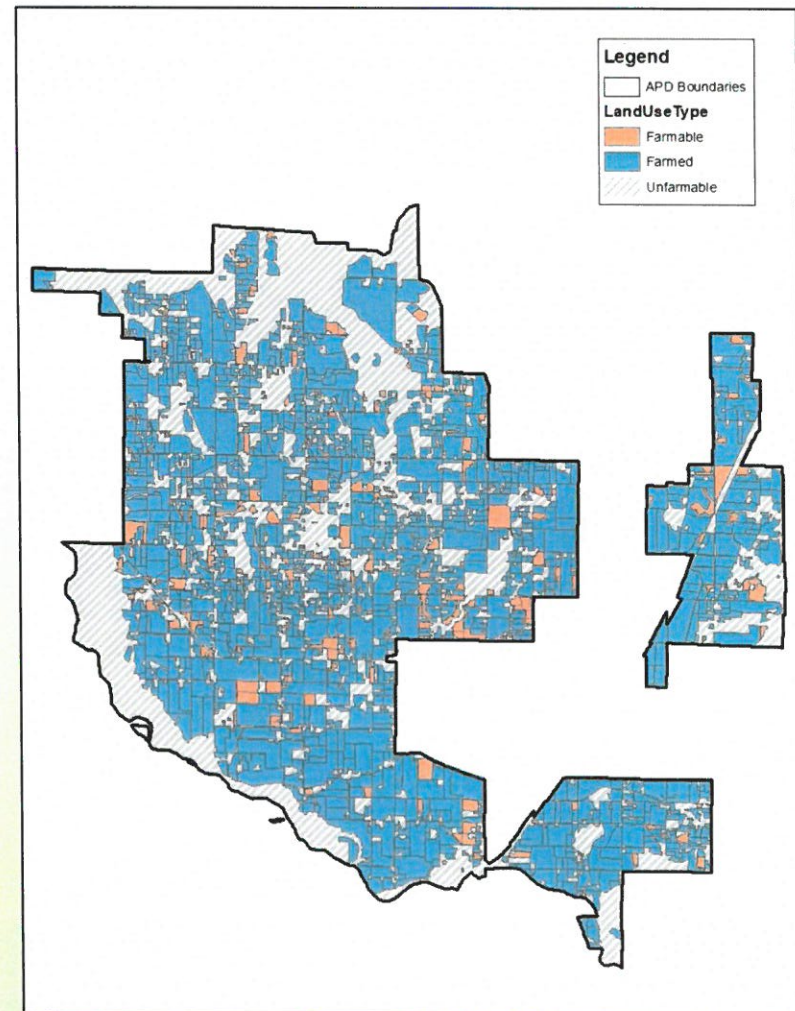
Enumclaw APD

Acreage: 20,659

ENUMCLAW APD



■ Farmed ■ Farmable ▨ Unfarmable



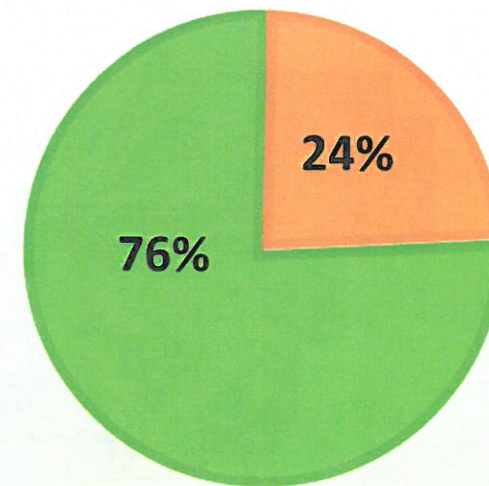
Enumclaw APD

Acreage: 20,659

Top Farmed Acreage:

1. Cattle
2. Horse
3. Hay/Silage

ENUMCLAW APD

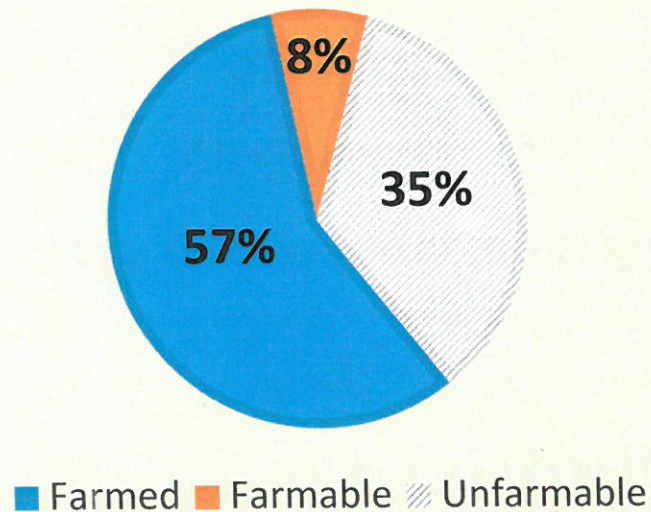


■ Food ■ Non Food

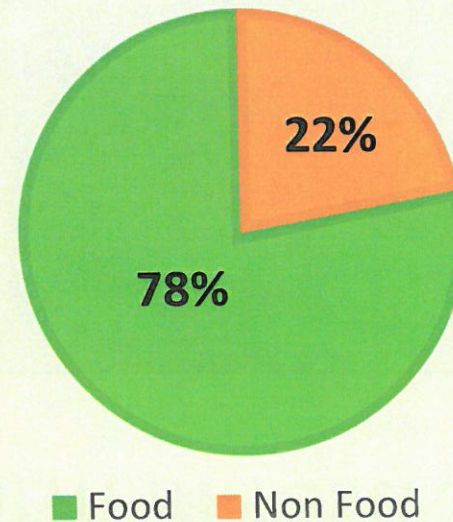
Preliminary Results: All APDs

Acreage: 40,584

Farmed: 23,262 Acres
Farmable: 3,022 Acres
Unfarmable: 14,300 Acres



Food Producing: 18,145 Acres
Non-Food Producing: 5,117 Acres

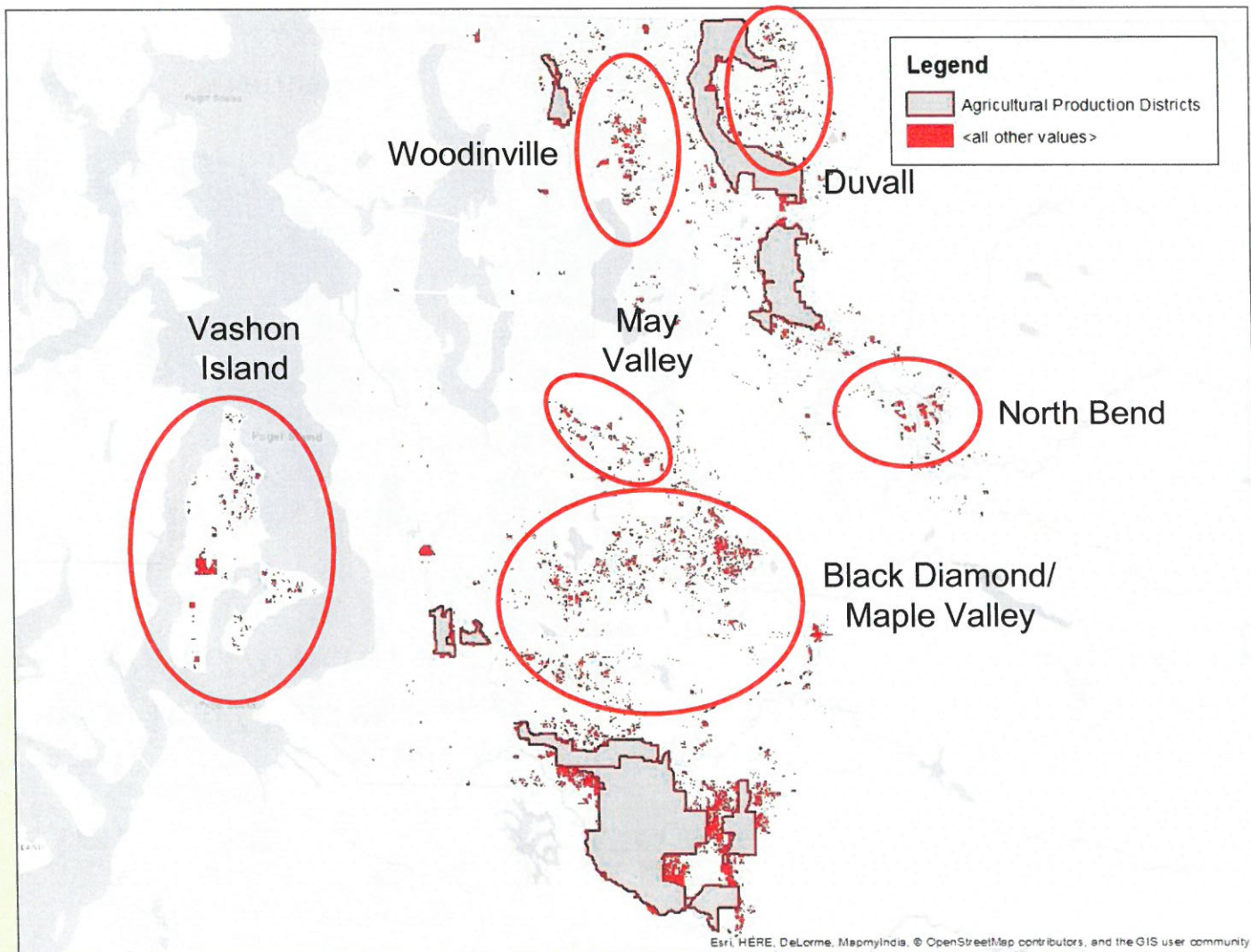


Preliminary Findings: APD Farm Infrastructure

- Total mapped structures: 8,253
 - 500 Greenhouses
 - 1,500 Barns
- Occupies 1,500 acres of land



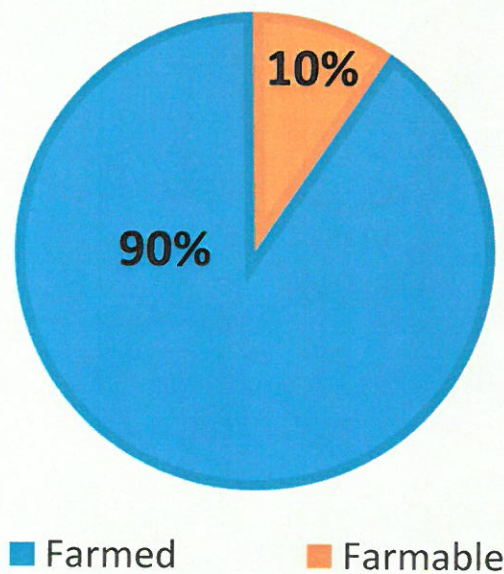
Woodinville, inside the Sammamish APD



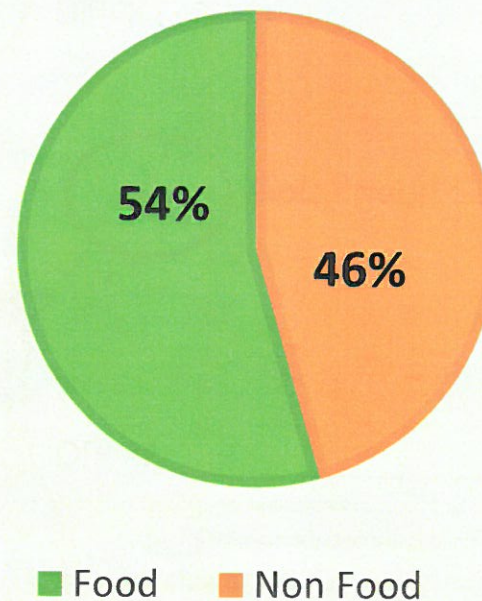
Preliminary Results: Areas Outside APDs

Acreage: 18,242

Farmed: 16,472 Acres
Farmable: 1,770 Acres



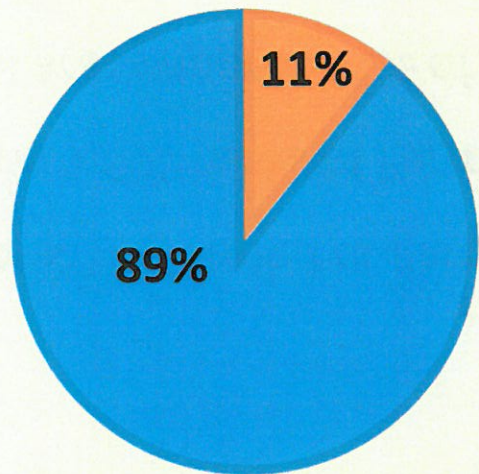
Food Producing: 8,948 Acres
Non-Food Producing: 7,524 Acres



Preliminary Findings: All Agriculture

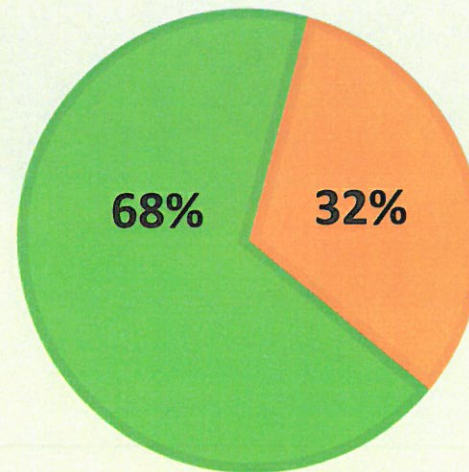
Acreage: 58,826

Farmed: 39,734 Acres
Farmable: 4,792 Acres



■ Farmed ■ Farmable

Food Production: 27,093 Acres
Non-Food Production: 12,641 Acres



■ Food ■ Non Food

Project Takeaways

- 3% of KC is Farmed or Farmable
- Nearly 5,000 acres of Farmable land
- Rural areas approx 41% of KC agriculture
- KC land survey reflections



Suhoversnik Dairy , Enumclaw APD

Questions

