



## Manure Spreader Rental Program

### Why Use a Manure Spreader?

Spreading manure or compost on pastures can improve the health of your pasture and put livestock manure to good use. A manure spreader is a chore-efficient way to distribute manure and provides an even application of nutrients. This helps prevent the smothering of grass plants and also reduces the potential for nutrient runoff into nearby streams.

**The KCD manure spreader is only available for use from April 1 to September 31.**

### Rental Details

King Conservation District has a two-yard compost spreader available for loan to landowners in the District's service area.\* The spreader is available for a \$30/day or \$80/weekend (Friday PM-Monday AM) fee that helps offset insurance and maintenance costs.

**Landowners are strongly encouraged to pick up the spreader at the KCD office in Renton.** The spreader

must be returned to the KCD office in Renton by noon and may be picked up the following day before 3pm. Users late to return the spreader will be charged for an additional day(s) of renting. KCD can deliver the spreader from KCD's office for an additional fee of \$2.00 per mile round-trip for the equipment, not to exceed \$100 per use. No pickup or dropoff on holidays. Please confirm your date(s) with staff.

Landowners are required to fill out the Manure Application Risk Management (ARM) worksheet prior to immediately prior to using the district's spreader. E-mail the completed worksheet to [manurespreader@kingcd.org](mailto:manurespreader@kingcd.org). Please consult with your planner if you receive a medium-high or high risk result after completing the ARM worksheet. The worksheet can be found online at <http://www.wadairyplan.org/ARM/arm-worksheet>

Landowners with a current KCD Farm Conservation Plan may not need a nutrient management consultation prior to use of the spreader. However, a follow-up review of the Farm Conservation Plan will be conducted and landowners are still required to fill out the ARM worksheet before spreading. Visit our web site to learn more about Farm Management Planning services.

\* Landowners who live within the city limits of Enumclaw, Federal Way, Skykomish, Milton, and Pacific are outside KCD's service area boundaries and are unable to take advantage of this program. Residents in those cities who are interested in utilizing KCD services should contact local elected officials about the benefits of joining King Conservation District.

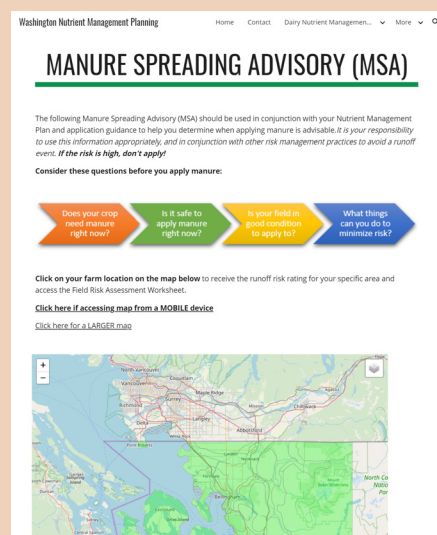


## Manure Spreading Advisory (MSA)

<http://www.wadairyplan.org/MSA>

The Manure Spreading Advisory (MSA) should be used in conjunction with your Nutrient Management Plan and application guidance to help you determine when applying manure is advisable.

It is your responsibility to use this information appropriately, and in conjunction with other risk management practices to avoid a runoff event.



A KCD Rural Services staff member will conduct a nutrient management consultation before delivery of the spreader to determine proper application rates. We strongly encourage landowners to have a recent soil test analysis available for review at the time of the consultation. Visit our website for more information about our **Soil Testing Program**.

It is recommended that landowners spread composted rather than raw manure. Nutrients in composted manure are more readily available for pasture grasses or crops and that reduces the risk of potential excess runoff. Learn more about composting manure on our website.

The spreader is ground-driven and can be towed by a small tractor or a pick-up truck. **This manure spreader is too large to be pulled by a riding mower.**

Reservations are required and landowners can self-book online.



800 SW 39th St, Suite 150 • Renton, WA 98057 • 425-282-1900 • [www.kingcd.org](http://www.kingcd.org)