

# ORCA RECOVERY GARDEN SPECIES LIST

Special thanks to our display garden partners:

NWBloom Ecological Services

[nwbloom.com](http://nwbloom.com)

Marenakos Rock Center

[marenakos.com](http://marenakos.com)

Big Trees Inc.

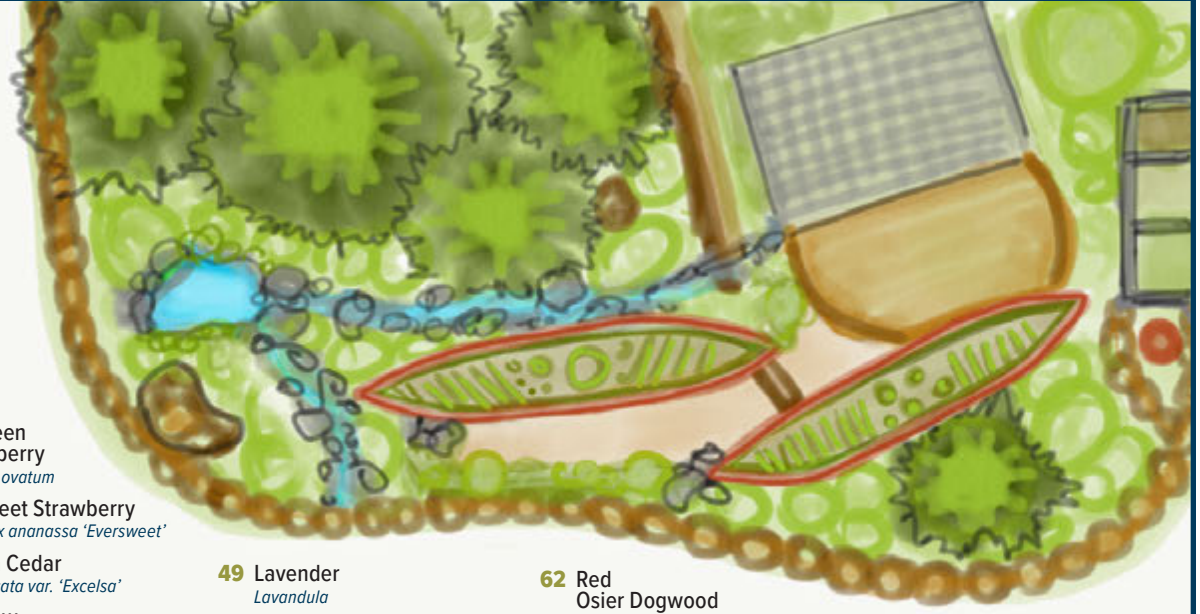
[bigtreesupply.com](http://bigtreesupply.com)

UW Recreation's Waterfront Activities Center

[www.washington.edu/ima/waterfront](http://www.washington.edu/ima/waterfront)

Lake Washington Institute of Technology Horticulture Program

[lwtech.edu](http://lwtech.edu)



- |  |   |  |  |  |   |
|--|---|--|--|--|---|
| <b>1</b> Anemone Marianna Orchid<br><i>Anemone coronaria</i>                 | <b>17</b> Camas<br><i>Camassia leichtlinii</i>  | <b>33</b> Evergreen Huckleberry<br><i>Vaccinium ovatum</i>                             | <b>49</b> Lavender<br><i>Lavandula</i>   | <b>62</b> Red Osier Dogwood<br><i>Cornus sericea</i>                   | <b>75</b> Sweet Flag<br><i>Ogon Acorus</i>                        |
| <b>2</b> Anise Hyssop<br><i>Agastache foeniculum</i>                         | <b>18</b> Charity Oregon Grape<br><i>Mahonia charity</i>  | <b>34</b> Eversweet Strawberry<br><i>Fragaria x ananassa 'Eversweet'</i>               | <b>50</b> 'Lee's Dark Purple' Rhododendron<br><i>Rhododendron catawbiense</i>                        | <b>63</b> Red Russian Kale<br><i>Brassica oleracea var. viridis</i>    | <b>76</b> Swiss Chard<br><i>Beta vulgaris subsp. vulgaris</i>     |
| <b>3</b> Arugula<br><i>Eruca vesicaria ssp. sativa</i>                       | <b>19</b> Chives<br><i>Allium schoenoprasum</i>   | <b>35</b> Excelsa Cedar<br><i>Thuja plicata var. 'Excelsa'</i>                         | <b>51</b> Lime Thyme<br><i>Thymus citriodorus</i>  | <b>64</b> Redwood Sorrel<br><i>Oxalis oregana</i>                      | <b>77</b> Sword Fern<br><i>Polystichum munitum</i>                |
| <b>4</b> Asparagus 'Mary Washington'<br><i>Asparagus officinalis</i>         | <b>20</b> Cilantro/Coriander<br><i>Coriandrum sativum</i>   | <b>36</b> Feverfew<br><i>Tanacetum parthenium</i>                                      | <b>52</b> 'Mammoth Mid Blue' Sweet Pea<br><i>Lathyrus odoratus</i>                                   | <b>65</b> Rhubarb<br><i>Rheum rhabarbarum</i>                          | <b>78</b> Tall Oregon Grape<br><i>Mahonia aquifolium</i>          |
| <b>5</b> Australian Round Leaf Mint Bush<br><i>Prostanthera rotundifolia</i> | <b>21</b> Collards (Wild Cabbage)<br><i>Brassica oleracea</i>   | <b>37</b> Fruit-Scented Sage<br><i>Salvia dorsiana</i>                                 | <b>53</b> Marjoram<br><i>Origanum majorana</i>   | <b>66</b> Rosemary<br><i>Salvia rosmarinus</i>                         | <b>79</b> Vine Maple<br><i>Acer circinatum</i>                    |
| <b>6</b> Autumn Fern<br><i>Dryopteris erythrosora</i>                        | <b>22</b> Common Fennel<br><i>Foeniculum vulgare</i>  | <b>38</b> German Chamomile<br><i>Matricaria chamomilla</i>                             | <b>54</b> Mugwort<br><i>Artemisia vulgaris</i>   | <b>67</b> Salad Burnet<br><i>Sanguisorba minor</i>                     | <b>80</b> Walla Walla Onion<br><i>Allium cepa 'Walla Walla'</i>   |
| <b>7</b> Beach Strawberry<br><i>Fragaria chiloensis</i>                      | <b>23</b> Common Rue<br><i>Ruta graveolens</i>  | <b>39</b> Giant Sequoia<br><i>Sequoiadendron giganteum</i>                             | <b>55</b> Netted Iris<br><i>Iris reticulata</i>  | <b>68</b> Salal<br><i>Gaultheria shallon</i>                           | <b>81</b> Western Hemlock<br><i>Tsuga heterophylla</i>            |
| <b>8</b> Bee Balm<br><i>Monarda didyma</i>                                   | <b>24</b> Creeping Oregon Grape<br><i>Mahonia repens</i>  | <b>40</b> Golden Clorinda Scented Geranium<br><i>Pelargonium 'Golden Clorinda'</i>     | <b>56</b> Narcissus 'Jack Snipe' Daffodil<br><i>Narcissus pseudonarcissus (Cyclamineus Daffodil)</i> | <b>69</b> Salmonberry<br><i>Rubus spectabilis</i>                      | <b>82</b> Western White Pine<br><i>Pinus monticola</i>            |
| <b>9</b> Beets<br><i>Beta vulgaris</i>                                       | <b>25</b> Deer Fern<br><i>Blechnum spicant</i>  | <b>41</b> Golden Flare Azalea<br><i>Rhododendron 'Golden Flare'</i>                    | <b>57</b> Pineapple Sage<br><i>Salvia elegans</i>  | <b>70</b> Slough Sedge<br><i>Carex obnupta</i>                         | <b>83</b> Wild Ginger<br><i>Asarum caudatum f. album</i>          |
| <b>10</b> Bleeding Heart<br><i>Dicentra spectabilis</i>                      | <b>26</b> 'Dinosaur' Lacinato Kale<br><i>Brassica oleracea Lacinato</i>   | <b>42</b> Green Lavender Cotton<br><i>Santolina rosmarinifolia</i>                     | <b>58</b> Purple Cauliflower<br><i>Brassica oleracea</i>   | <b>71</b> Small Elderberry<br><i>Sambucus nigra L. ssp. canadensis</i> | <b>84</b> Winter Savory<br><i>Satureja Montana</i>                |
| <b>11</b> Blue Arrows Rush<br><i>Juncus inflexus</i>                         | <b>27</b> Douglas Fir<br><i>Pseudotsuga menziesii</i>   | <b>43</b> Horned Violet<br><i>Viola cornuta</i>  | <b>59</b> Purple Sage<br><i>Salvia leucophylla</i>   | <b>72</b> Snow Pea<br><i>Pisum sativum var. macrocarpum</i>            | <b>85</b> Yellow-Leaved Calamus<br><i>Acorus gramineus 'Ogon'</i> |
| <b>12</b> 'Blue Champion' Double Primrose<br><i>Primula prima belarina</i>   | <b>28</b> Dragon Tail Fern<br><i>Asplenium x ebenoides</i>  | <b>44</b> Incense Cedar<br><i>Calocedrus decurrens</i>                                 | <b>60</b> Quinault Strawberry<br><i>Fragaria x ananassa 'Quinault'</i>                               | <b>73</b> Snow Pea<br><i>Pisum sativum var. saccharatum</i>            |   |
| <b>13</b> Blueberry<br><i>Vaccinium Cyanococcus</i>                          | <b>29</b> Eastern Catmint<br><i>Nepeta mussinii</i>   | <b>45</b> Indian Plum (Oso Berry)<br><i>Oemleria cerasiformis</i>                      | <b>61</b> Red Flowering Currant<br><i>Ribes Sangiuneum</i>   |  |   |
| <b>14</b> Brass Buttons<br><i>Cotula coronopifolia</i>                       | <b>30</b> English Primrose Belarina® Blue Champion<br><i>Primula acaulis subsp. acaulis Belarina® Blue Champion</i> | <b>46</b> 'Italian Flat Leaf' Parsley<br><i>Petroselinum crispum var. neapolitanum</i> |  |  |   |
| <b>15</b> Bright Lights Swiss Chard<br><i>Beta vulgaris var. cicla</i>       | <b>31</b> Espalier Pear<br><i>Pyrus pyrifolia</i>   | <b>47</b> Kinnikinnick<br><i>Arctostaphylos uva-ursi</i>                               |  |  |   |
| <b>16</b> California Redwood<br><i>Sequoia sempervirens</i>                  | <b>32</b> EverColor® Everillo Sedge<br><i>Carex oshimensis 'Everillo'</i>   | <b>48</b> Lady Fern<br><i>Athyrium filix-femina</i>                                    |  |  |   |