



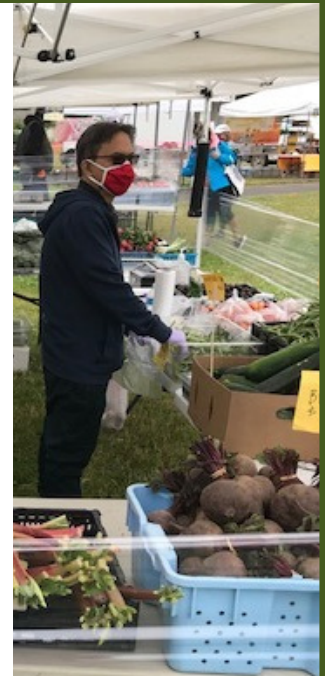
Funding Invested in the City of Auburn

GRANT AWARDS KCD awards grants to local governments, nonprofit organizations, tribes, and other agencies to improve natural resources and increase regional conservation. KCD funds for projects listed below were collected from an annual, per-parcel assessment or rate and charge for projects in partnership with Member Jurisdictions and/or the three watershed forums. These monies support high-impact projects in both urban and rural areas and often leverage funding from state, federal, and other sources. For more information on these projects or about the grant programs, please contact Jessica.Saavedra@kingcd.org or call 425-773-9065.

SERVICES In addition to conservation services and cost share awards listed, KCD also provides services to cities and residents in shoreline restoration, community agriculture and urban forestry. www.kingcd.org

KCD–Auburn Member Jurisdiction Grants Awarded

Year	Project	Funds Awarded
2015	Auburn International Farmer’s Market–Promotion and Demonstrations	\$20,000
	White River Valley Museum - Environmental Education at the Mary Olson Farm	\$12,120
2016	Auburn Farmer’s Market - Marketing, Demonstration, SNAP	\$20,000
2017	Auburn International Farmers Market–Marketing and Demonstrations	\$18,961
	White River Valley Museum - Pollinators, Fieldtrips and Farmyard Drainage	\$18,760
2018	Auburn International Farmers Market–Marketing and Demonstrations	\$20,000
	White River Valley Museum - 2018-19 Environmental Education at Mary Olson Farm	\$17,815
2019	Auburn International Farmers Market–Marketing and Demonstrations	\$20,000
	Environmental Science Center Environmental Heroes: Improving Watershed Health and Salmon Habitat Through Education and Outreach	\$1,780
2020	White River Valley Museum 2020 Farm Program and Project Support	\$19,965
	Auburn International Farmers Market–Marketing and Demonstrations	\$20,000



KCD–Auburn Funding Available for Grants or Services

2014-2018 Rates and Charges Collections	\$163,517.73
2019 Rates and Charges Collections	\$32,325.93
Total Collections	\$195,843.66

Estimated 2020 Rates and Charges Collections	\$32,000.00
Estimated Total Amount Available	\$11,562.59

Regional Food System Grants

Support for Local Farms, Food Production and Access



This KCD program seeks to fund projects that contribute to the economic viability of local farms, encourage new farmers to expand acreage in food production, improve food access and increase demand for King County farm products. For more information visit kingcd.org or contact Mary.Embleton@kingcd.org or call 425-282-1958.

Year	Organization	Project	Funds Awarded
2019	South King County Food Coalition	Food Access and Aggregation Community Team Site Exploration	\$100,000
	World Relief Seattle	Teaching and Commercial Kitchen	\$100,000
	Vashon-Maury Island Land Trust	Matsuda Farm to Vashon Schools	\$6,000
	PCC Farmland Trust	Working Farmland Partnership	\$100,000
	King County DNRP	King County Irrigation Water Needs Assessment and Solutions for Unmet Current and Future Demand	\$70,092
	New Start Community Garden	Garden Produce for School Lunches	\$9,980
	SnoValley Tilth	Sound Tenure Alternatives for Small Farms	\$94,335
	Seattle Good Business Network/FORKS	Building Local Food Connections: Conference, Events, Communications	\$100,000

Landowner Incentive Program

Cost-Share Awards for Projects on Private Property

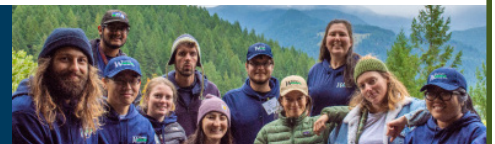


KCD offers financial support to land managers who install projects that promote pre-approved conservation practices. Expenses are matched with LIP cost-share funding at a ratio of 50 to 90 percent of the total cost for specific projects. For more information visit kingcd.org or contact Laura.Redmond@kingcd.org or call 425-282-1951.

Year	Number of Cooperators	Funds Awarded
2015	1	\$16,100
2016	6	\$5,665
2017	9	\$48,447
2018	3	\$6,230
2019	3	\$20,480

Conservation Crew Services

Available to Member Jurisdictions



Does your city need stewardship assistance for its natural areas? Do those cleared areas need to be planted with native plants? Services provided include: removal of invasive species (knotweed, ivy, holly, laurel, blackberry and more), brush-mowing, herbicide application, and survival rings. Landscaping with native plants includes: creation of city-approved planting plans, installation, Maintenance, and irrigation. Contact KCD to see how our crew can help. Contact Brett.Anderson@kingcd.org or call 425-282-1953/425-773-8037.

Year	Project	Total Costs
2014	Pilot Project—Good Food Bags	\$15,000
2016	Riparian Forest Buffer Installation on Private Property, Tributary of White River	\$7,923
2017	Riparian Forest Buffer Installation on Private Property, Crisp Creek	\$14,709
2017	Riparian Forest Buffer Installation on Private Property, Crisp Creek	\$14,923
2019	Riparian Forest Buffer Installation on Private Property, Bowman Creek	~\$

