

Funding Invested in the City of Bellevue

GRANT AWARDS KCD awards grants to local governments, nonprofit organizations, tribes, and other agencies to improve natural resources and increase regional conservation. KCD funds for projects listed below were collected from an annual, per-parcel assessment or rate and charge for projects in partnership with Member Jurisdictions and/or the three watershed forums. These monies support high-impact projects in both urban and rural areas and often leverage funding from state, federal, and other sources. For more information on these projects or about the grant programs, please contact Jessica.Saavedra@kingcd.org or call 425-773-9065.

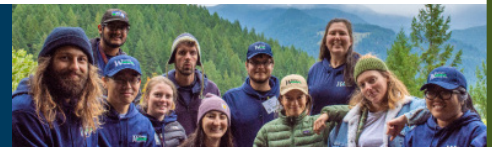
SERVICES In addition to conservation services and cost share awards listed, KCD also provides services to cities and residents in shoreline restoration, community agriculture and urban forestry. www.kingcd.org

KCD–Bellevue Funding Available for Grants or Services

2014-2018 Rates and Charges Collections	\$392,805.29
2019 Rates and Charges Collections	\$77,885.43
Total Collections	\$470,690.72

Estimated 2020 Rates and Charges Collections	\$77,000.00
Estimated Total Amount Available	\$62,359.75

Conservation Crew Services Available to Member Jurisdictions



Does your city need stewardship assistance for its natural areas? Do those cleared areas need to be planted with native plants? Services provided include: removal of invasive species (knotweed, ivy, holly, laurel, blackberry and more), brush-mowing, herbicide application, and survival rings.

Landscaping with native plants includes: creation of city-approved planting plans, installation, Maintenance, and irrigation. Contact KCD to see how our crew can help. Contact Brett.Anderson@kingcd.org or call 425-282-1953/425-773-8037.

Year	Project	Funds Awarded
2015	Hedgerow on Private Property, West Tributary Kelsey Creek	\$2,416
2018	KCD South King County Tree Canopy Assessment Supplemental funding for additional geographies	\$4,000

Landowner Incentive Program Cost-Share Awards for Projects on Private Property



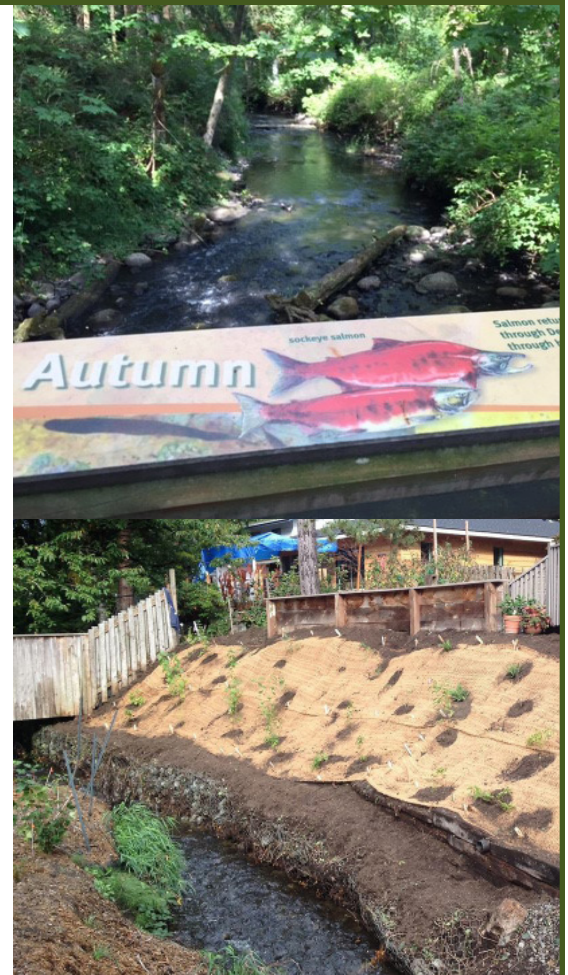
KCD offers financial support to land managers who install projects that promote pre-approved conservation practices. Expenses are matched with LIP cost-share funding at a ratio of 50 to 90 percent of the total cost for specific projects. For more information visit kingcd.org or contact Laura.Redmond@kingcd.org or call 425-282-1951.

Cost share funding was awarded for the following best management practices within the city limits: Heavy Use Protection Area, Hedgerow Buffer, Roof Runoff Structure and Waste Storage Facility.

King Conservation District • Renton, WA 98057 • 425-282-1900 • www.kingcd.org

KCD–Bellevue Member Jurisdiction Grants Awarded

Date	Project	Funds Awarded
2013	Horses for Clean Water Program Bridle Trails	\$22,000
2014	Earth Corps–Kelsey Creek Enhancement at Larsen Lake	\$43,989
	Bellevue City Hall Green Roof	\$90,000
2015	Bellevue Energy Outreach Campaign	\$30,000
	Ivy Out	\$60,000
2016	Urban Meadow at Bellevue Botanic Garden	\$50,000
	Lake Hills Greenbelt SE 8th Wetland Buffer	\$30,000
	Tree Canopy Preservation Outreach	\$25,000
2018	Low Impact Development Standard Detail Project	\$52,000
	Replacement of Waterwise Garden Interpretive Signs	\$15,000
	BBG Native Discovery Garden Enhancement Project	\$25,000
	Martin Luther King Day 2019 Tree Planting Volunteer Event	\$5,000
2019	Coal Creek Natural Area Phase 2 Interpretive Signage	\$20,000
	Lewis Creek Park Interpretive Signage	\$20,000
	Bellevue Parks Open Space Forest Health Assessment	\$50,000
	BBG Native Discovery Garden Enhancement Phase 2	\$25,000
2020	Translated Materials - Natural Resource Conflict Outreach	\$10,000
	Scoping Animal Relief Areas for Bellevue	\$35,000
	Natural Resource Animated Short Videos	\$24,000
	Lake Hills Greenbelt Knotweed Restoration	\$30,000



Regional Food System Grants

Support for Local Farms, Food Production and Access



This KCD program seeks to fund projects that contribute to the economic viability of local farms, encourage new farmers to expand acreage in food production, improve food access and increase demand for King County farm products. For more information visit kingcd.org or contact Mary.Embleton@kingcd.org or call 425-282-1958.

Year	Organization	Project	Funds Awarded
2019	South King County Food Coalition	Food Access and Aggregation Community Team Site Exploration	\$100,000
	World Relief Seattle	Teaching and Commercial Kitchen	\$100,000
	Vashon-Maury Island Land Trust	Matsuda Farm to Vashon Schools	\$6,000
	PCC Farmland Trust	Working Farmland Partnership	\$100,000
	King County DNRP	King County Irrigation Water Needs Assessment and Solutions for Unmet Current and Future Demand	\$70,092
	New Start Community Garden	Garden Produce for School Lunches	\$9,980
	SnoValley Tilth	Sound Tenure Alternatives for Small Farms	\$94,335
	Seattle Good Business Network/FORKS	Building Local Food Connections: Conference, Events, Communications	\$100,000