

**KING CONSERVATION DISTRICT
BOARD OF SUPERVISORS MEETING**

04.12.21

4:00 PM to 5:45 PM– via Teleconference Only

Zoom Link: <https://zoom.us/j/95213329190>

Call In Number: (253) 215-8782

Meeting ID: 952 1332 9190

Meeting Agenda

Call to Order

1. Preliminary Matters: 4:00 PM – 4:05 PM

- a) Introductions
- b) Additions or Corrections to the Agenda
- c) Adoption of the Board Agenda

2. Consent Agenda: 4:05 PM – 4:10 PM

Items listed below will be enacted by one motion. If separate discussion is desired on an item, that may be removed from the Consent Agenda and placed on the Regular Agenda at the request of a Board Member

a) Board Minutes –

- 1. 3/8 Regular BOS meeting
- 2. 3/9 Executive Director Search Committee Meeting
- 3. 3/22 Finance Sub-Committee Meeting
- 4. 3/22 Grant Sub-Committee Meeting
- 5. 3/23 Special BOS Meeting
- 6. 3/30 Special BOS Meeting

b) LIP Applications –

- 1. AI:21-028 Witold Szczepaniak - Forest Health Management – Redmond

c) Member Jurisdiction Grant Applications-

- 1. AI: 21-029 City of Mercer Island-Luther Burbank Park South Shoreline Restoration - Saavedra
- 2. AI: 21-030 Anchor QEA Seahurst Park Phase 2 Post Construction Eelgrass Survey 2021 – Saavedra

3. Public Comment 4:10 PM – 4:15 PM

4. Unfinished Business: 4:15 PM – 4:45 PM

- a) Election Update – Dostal
- b) Plant Sale Update – Dostal
- c) Executive Director Search Update
- d) Agricultural Drainage Update - Stockton

5. New Business: 4:45 PM – 5:15 PM

- a) Executive Director Report - Setel
- b) Third Sector Company – Board Development – Brinson

**KING CONSERVATION DISTRICT
BOARD OF SUPERVISORS MEETING**

04.12.21

Meeting Agenda

Page 2

- 6. Executive Session** - per RCW 42.30.110(1)(i) to discuss litigation/potential litigation/legal risk.

5:15 PM – 5:45 PM

CONSENT AGENDA

KING CONSERVATION DISTRICT

Board of Supervisors
Meeting Minutes

March 8, 2021

Supervisors Present: Burr Mosby –Chair; Kirstin Haugen – Vice Chair; Bill Knusten – Auditor;
Jim Haack – Supervisor; Chris Porter - Supervisor

Associate Supervisors Present: None

Guests Present: Jean Fike- WSCC; Lorna Miss, Sarah Reyneveld, Alan Chapman - WACD

Staff Present: Ava Souza, Brandy Reed, Deirdre Grace, Lindsey Davidson, Mary Embleton, Liz Clark, Liz Stockton, Nikki Wolf

Preliminary Matters:

Chairman Mosby called meeting to order at 4:03 pm. All attendees introduced themselves. Mosby asked for additions or corrections to the current agenda.

Haugen moved; Porter seconded passed unanimously a motion to approve the agenda (5 ayes, 0 nays).

Public Comment:

Consent Agenda:

Mosby read the consent agenda items aloud and all items were voted on.

- a) Board Minutes – 2/8/21 BOS Meeting; 2/10/21 BOS Meeting; 2/22/21 Grant Sub-Committee Meeting
- b) LIP Applications – None
- c) Member Jurisdiction Grant Applications – None

Porter moved; Haugen seconded passed unanimously a motion to approve the consent agenda (5 ayes, 0 nays).

Pulled Consent Agenda Items: None

Finance:

- a) AI 21-023: A motion to approve check number 23230 through 23294 for a total of \$518,654.36; non-payroll EFTs totaling \$14,242.96; Bank Fees of \$63.00; Void Check of \$8,496.63; and February 2021 Payroll for \$206,436.20 – Souza

Souza briefly reviewed the check register and confirmed 2020 Year-End and 2021 to-date financials will be presented at the Finance Sub-Committee meeting on March 22nd. Souza added the audit is still ongoing and anticipates it will be wrapped up soon.

Knutsen moved; Haugen seconded passed unanimously AI 21-023 a motion to approve check number 23230 through 23294 for a total of \$518,654.36; non-payroll EFTs totaling \$14,242.96; Bank Fees of \$63.00; Void Check of \$8,496.63; and February 2021 Payroll for \$206,436.20 (5 ayes, 0 nays).

Unfinished Business:

a) AI 21-024: WSCC Authorized Signatories

Setel explained that the Washington State Conservation Commission requires authorized signatories be designated to sign documents and requested to be added to the list of authorized signatories.

Porter moved; Haugen seconded passed unanimously AI 21-024 a motion to authorize Cynthia Setel as an authorized signatory with Washington State Conservation Commission (5 ayes, 0 nays).

Haugen moved; Porter seconded passed unanimously AI 21-025 a motion authorizing Cynthia Setel be added to the District's claim form with the King County Auditor's Office (5 ayes, 0 nays).

Executive Session:

Mosby indicated that the Board would be moving into an Executive Session for the purpose of discussing litigation and potential legal risk. Mosby stated that the topics would last approximately 60 minutes, unless extended. The Board moved into an executive session at 4:27 pm using a separate teleconference line.

No decisions, actions, or motions were made following the session. The regular board meeting was reconvened by Mosby at 5:26 pm

There was no more business before the Board.

Knutsen moved; Porter seconded passed unanimously a motion to adjourn the meeting at 5:27pm. (5 ayes, 0 nays).

Authorized Signature

Date

Summary of Motions

Haugen moved; Porter seconded passed unanimously a motion to approve the agenda (5 ayes, 0 nays).

Porter moved; Haugen seconded passed unanimously a motion to approve the consent agenda (5 ayes, 0 nays).

Knutsen moved; Haugen seconded passed unanimously AI 21-023 a motion to approve check number 23230 through 23294 for a total of \$518,654.36; non-payroll EFTs totaling \$14,242.96; Bank Fees of \$63.00; Void Check of \$8,496.63; and February 2021 Payroll for \$206,436.20 (5 ayes, 0 nays).

Porter moved; Haugen seconded passed unanimously AI 21-024 a motion to authorize Cynthia Setel as an authorized signatory with Washington State Conservation Commission (5 ayes, 0 nays).

Haugen moved; Porter seconded passed unanimously AI 21-025 a motion authorizing Cynthia Setel be added to the District's claim form with the King County Auditor's Office (5 ayes, 0 nays).

Knutsen moved; Porter seconded passed unanimously a motion to adjourn the meeting at 5:27pm. (5 ayes, 0 nays).

KING CONSERVATION DISTRICT
EXECUTIVE DIRECTOR SEARCH COMMITTEE
Meeting Minutes

March 9th, 2021

Committee Members Present: Councilmember Brenda Fincher - Advisory Committee Chair;
Kirstin Haugen - Supervisor; Burr Mosby - Supervisor, Chris Porter - Supervisor; Christie True -
King County Department of Natural Resources and Parks

Other Attendees Present: Ed Rogan – The Valtas Group; Amy Burton - The Valtas Group, Mary
Embelton – KCS Staff, Lorna Miss – KCD Staff.

Preliminary Matters:

Burr Mosby called the meeting to order at 11:05 AM. All attendees introduced themselves.

**Haugen moved; Porter seconded passed unanimously a motion to adopt the agenda (5 ayes,
0 nays).**

New Business: Executive Director Profile

Rogan presented the draft Executive Director profile to the committee.

**Haugen moved; Porter seconded passed unanimously a motion to approve the Executive
Director profile (4 ayes, 0 nays).**

Porter moved; Fincher seconded a motion to adjourn the meeting (4 ayes, 0 nays).

Mosby adjourned the meeting at 12:33 PM

Authorized Signature

Date

Summary of Motions

**Haugen moved; Porter seconded passed unanimously a motion to adopt the agenda (5 ayes,
0 nays).**

**Haugen moved; Porter seconded passed unanimously a motion to approve the Executive
Director profile (4 ayes, 0 nays).**

Porter moved; Fincher seconded a motion to adjourn the meeting (4 ayes, 0 nays).

KING CONSERVATION DISTRICT

Board of Supervisors
Meeting Minutes

March 22nd, 2021

Supervisors Present: Burr Mosby – Chair; Kirstin Haugen – Vice Chair; Bill Knutsen – Auditor;
Chris Porter - Supervisor

Guests Present: Jean Fike, Alan Chapman

Staff Present: Ava Souza, Brandy Reed, Lindsey Davidson, Lorna Miss, Nikki Wolf, Alex
Martinsons, Liz Clark, Jessica Saavedra Deirdre, Cynthia Setel, Laura Redmond, Carrie King

Preliminary Matters:

Chair Mosby called the meeting to order at 4:15 PM. All attendees introduced themselves. Mosby
asked for additions or corrections to the current agenda.

Public Comment: None

New Business:

Souza presented the closeout for the 2020 budget, with remaining funds of \$258,000.

Souza presented the January and February 2021 financials.

Knutsen moved; Porter seconded passed unanimously a motion to approve the 2020 Year
End Transactions of 4 Journal Entries and 4 Transfers, for Membership
Jurisdiction \$1,000,856, Regional Food \$900,000, Sick/ Vacation \$31,428, LIP for 270,673,
Sound Transit \$14,128, Working Lands \$28,356, Plant Sale \$122,610.08, and Cost Share
Rollover of \$203,100 (4-ayes, 0-nays).

Knutsen moved; Haugen seconded passed unanimously a motion to approve the year end
considerations of Smart Sheet 2021 \$7,800, 2020 Collective Bargaining \$66,834, 2021 Covid
Costs \$8,500, and 2021 HR \$ 35,000 (4-ayes, 0-nays).

Knutsen moved; Porter seconded passed unanimously motion to adjourn the meeting at
5:04 PM. (4-ayes, 0-nays).

Authorized Signature

Date

Board of Supervisors
Meeting Minutes
March 22nd, 2021

28 Summary of Motions

29 Knutsen moved; Porter seconded passed unanimously a motion to approve the 2020 Year
30 End Transactions of 4 Journal Entries and 4 Transfers, for Membership
31 Jurisdiction \$1,00,856, Regional Food \$900,000, Sick/ Vacation \$31,428, LIP for 270,673,
32 Sound Transit \$14,128, Working Lands \$28,356, Plant Sale \$122,610.08, and Cost Share
33 Rollover of \$203,100 (4-ayes, 0-nays).

34 Knutsen moved; Haugen seconded passed unanimously a motion to approve the year end
35 considerations of Smart Sheet 2021 \$7,800, 2020 Collective Bargaining \$66,834, 2021 Covid
36 Costs \$8,500, and 2021 HR \$ 35,000 (4-ayes, 0-nays).

37 Knutsen moved; Porter seconded passed unanimously motion to adjourn the meeting at
38 5:04 PM. (4-ayes, 0-nays).

39

40

41

KING CONSERVATION DISTRICT
Board of Supervisors
Grant Subcommittee Meeting
Meeting Minutes
Monday, March 22nd, 2021

- 1 Supervisors Present, Burr Mosby-- Chair, Kirstin Haugen
- 2 Associate Supervisors Present: None.
- 3 Guests Present: None
- 4 Staff Present: Jessica Saavedra, Deirdre Grace, Mary Embleton, Liz Clark, Cynthia Setel
- 5 Preliminary Matters:
- 6 Meeting called to order at 3:00 pm by Burr Mosby.
- 7 Applications
- 8 Haugen moved, Mosby seconded, unanimously passed a motion to recommend the Member
9 Jurisdiction grant application from City of Mercer Island for the Luther Burbank Park
10 South Shoreline Restoration project for approval at the next Board of Supervisors meeting.
- 11 Mosby moved, Haugen seconded, unanimously passed a motion to recommend the Burien
12 Member Jurisdiction grant application from Anchor QEA for the Seahurst Park Phase 2
13 Post Construction Eelgrass Survey 2021 project for approval at the next Board of
14 Supervisors meeting.
- 15 Haugen moved, Mosby seconded, unanimously passed a motion to approve the Regional
16 Food System Strategic Initiative grant application from Business Impact Northwest Farm
17 Business Support and Technical Assistance Strategic Initiative Project.
- 18 Amendments
- 19 Haugen moved, Mosby seconded, unanimously passed a motion to approve the amendment
20 request from South King County Food Coalition, Food Access and Aggregation Community
21 Team - FAACT Site Exploration project revising the grant as detailed.
- 22 Haugen moved, Mosby seconded, unanimously passed a motion to approve the amendment
23 request from Washington State University WSU On-Demand project revising the grant as
24 detailed.
- 25 Close outs
- 26 Haugen moved, Mosby seconded, unanimously passed a motion to close the City of Duvall --
27 McCormick Park Wetland Evaluation Member Jurisdiction grant agreement.
- 28 Mosby moved, Haugen seconded, unanimously passed a motion to close the City of Bellevue
29 -- Replacement of Waterwise Interpretive Signage Member Jurisdiction grant agreement.

KING CONSERVATION DISTRICT
Board of Supervisors
Grant Subcommittee Meeting
Meeting Minutes
Monday, March 22nd, 2021

Haugen moved, Mosby seconded, unanimously passed a motion to close the InterIM CDA – WILD Youth Program Stipends for Environmental Justice Member Jurisdiction grant agreement.

Haugen moved, Mosby seconded, unanimously passed a motion to close the Cascadia Cooperative Farms – Pasture-Raised Poultry and Egg Cooperative Start-Up Regional Food System grant agreement

Mosby moved, Haugen seconded, unanimously passed a motion to close the Cascadia Cooperative Farms – Phase 2: Farmer Engagement and Support Regional Food System grant agreement.

Haugen moved, Mosby seconded, unanimously passed a motion to close the Living Well Kent – LWK Green Houses and Farm Regional Food System grant agreement.

Mosby moved, Haugen seconded, unanimously passed a motion to close the Snoqualmie Valley Farmers Cooperative – Market Boost Project Regional Food System grant agreement.

Mosby moved, Haugen seconded, unanimously passed a motion to close the Vashon Island Growers Association – Vashon Fresh...an online marketplace for local food Regional Food System grant agreement.

Mosby moved, Haugen seconded, unanimously passed a motion to close the Grow Food dba Viva Farms - Training and Incubating a new and diverse generation of farmers in King County Regional Food System grant agreement.

Mosby moved, Haugen seconded, unanimously passed a motion to close the Vashon-Maury Island Land Trust - Matsuda Farm to Vashon Schools grant agreement.

Haugen moved; Mosby seconded unanimously passed a motion to adjourn the meeting at 4:08 pm

Authorized Signature

Date

Summary of Motions

See above

KING CONSERVATION DISTRICT

Board of Supervisors
Meeting Minutes

March 23rd 2021

1 **Supervisors Present:** Burr Mosby - Chair; Kirstin Haugen - Vice Chair; Bill Knutsen - Auditor;
2 Chris Porter - Supervisor

3 **Guests Present:** None

4 **Staff Present:** Lorna Miss, Cynthia Setel

5 **Preliminary Matters:**

6 Chair Mosby called the meeting to order at 4:05 PM. All attendees introduced themselves. Mosby
7 asked for additions or corrections to the current agenda.

8 Haugen moved; Porter seconded, passed unanimously a motion to approve the agenda (4
9 aves,0 -nays).

10 **Executive Session:** RCW 42.30.110(1)(i) to discuss litigation/potential litigation/legal risk.

11 Mosby indicated that the Board would be moving into an Executive Session for one hour, unless
12 extended. The Board moved into Executive Session at 4:08 PM using a separate teleconference
13 line. The Board requested an additional 15 minutes to be added to the Executive Session at 5:00
14 PM. No decisions, actions, or motions were made following the session. The Board meeting was
15 reconvened by Mosby at 5:20 PM.

16 There was no more business before the Board.

17 Chair Mosby adjourned the meeting at 5:25 PM.

18 Authorized Signature

Date

19

20

21 Summary of Motions

22 Haugen moved; Porter seconded, passed unanimously a motion to approve the agenda (4-
23 aves, 0 -nays).

24

25

26

KING CONSERVATION DISTRICT
SPECIAL BOARD OF SUPERVISORS
Meeting Minutes

March 30th, 2021

Supervisors Present: Burr Mosby - Chair; Kirstin Haugen - Vice Chair; Bill Knutsen - Auditor;
Chris Porter - Supervisor; Jim Haack – Supervisor

Guests Present: Jean Fike

Staff Present: Lorna Miss, Cynthia Setel, Carrie King, Jessica Saavedra, Liz Clark, Mary
Embleton.

Preliminary Matters:

Chair Mosby called the meeting to order at 5:20 PM. All attendees introduced themselves. Mosby
asked for additions or corrections to the current agenda.

Haugen moved; Haack seconded, passed unanimously a motion to approve the agenda (5 -
aves, 0 -nays).

Executive Session: Per RCW 42.30.140(4) for the purpose of discussing Collective Bargaining.

Mosby indicated that the Board would be moving into an Executive Session for 30 minutes, unless
extended. The Board moved into Executive Session at 5:24 PM using a separate teleconference
line. The Board requested an additional 15 minutes to be added to the Executive Session at 5:52
PM. The Board requested an additional 10 minutes to be added to the Executive Session at 6:05
PM. No decisions, actions or motion were made following the session. The Board meeting was
reconvened by Mosby at 6:15 PM.

New Business: Authorize a Collective Bargaining Agreement between King Conservation
District and the Washington Federation of State Employees AFSCME Council 28, AFL-CIO.

Haugen moved; Haack seconded, passed unanimously a motion to approve the Collective
Bargaining Agreement between King Conservation District and the Washington
Federation of State Employees AFSCME Council 28, AFL-CIO (5 -aves, 0 -nays).

There was no more business before the Board.

Knutsen moved; Porter seconded, passed unanimously a motion to adjourn the meeting (5 -
aves, 0 -nays).

Chair Mosby adjourned the meeting at 6:23 PM.

31

32 Authorized Signature

Date

33

34

35

Summary of Motions

36 Haugen moved; Haack seconded, passed unanimously a motion to approve the agenda (5 -
37 ayes, 0 -nays).

38 Haugen moved; Haack seconded, passed unanimously a motion to approve the Collective
39 Bargaining Agreement between King Conservation District and the Washington
40 Federation of State Employees AFSCME Council 28, AFL-CIO (5 -ayes, 0 -nays).
41

42 Knutsen moved; Porter seconded, passed unanimously a motion to adjourn the meeting (5 -
43 ayes, 0 -nays).

44

King Conservation District Landowner Incentive Program
2021 February Awards

BUDGET SUMMARY	
Total- Cost-share Budget	\$506,300.00
Total- Cost-share Awarded	\$64,526.20
2021 Awards	\$60,402.00
March Award Cycle	\$4,124.20
Cost-share Budget Remaining	\$441,773.80
Funds Available to Reallocate	\$70.28
Adjusted Balance Available for FY 2021	\$441,844.08

COST SHARE AWARD DETAIL- March Cycle								
Last Name	First Name	Best Management Practice	Award Amount	Completion Date	Acres	Feet	Plants	Qty
Gilman	Brad and Wendy	Hedgerow	\$ 1,744.20	3/31/2022	0.03		84	
Paull	Lyssa	Heavy Use Protection Area	\$ 2,380.00	3/31/2022				1.0
Total			\$4,124.20		0.03	0.00	84	

COST-SHARE FUNDS AVAILABLE TO REALLOCATE		
(Prior & Current Year Contracts, Cancelled or Closed Under Budget During CY 2021)		
Status	Number of Contracts	Amount
Closed Underbudget	1	\$ 70.28
Cancelled	0	\$ -
	1	\$ 70.28



2019-02 - Deglman – Forest Health Management – Inspection



2018-69 – Aaron Lichter – Hedgerow – Inspection

**King Conservation District Board of Supervisors Meeting 04/12/2021
Agenda Action Briefing/Report AI 21-028**

SUBJECT:

Approve KCD Landowner Incentive Program cost-share application from Witold Szczepanik, for a Forest Health Management, in the amount of \$15,886.88.

FISCAL IMPACT

The current balance of cost-share funding for KCD LIP 2021 is summarized in the following table:

2021 LIP Cost-share Available	\$441,844.08
Current Request	\$15,886.88
Balance Remaining	\$425,957.20

POLICY CONSIDERATION

This proposed cost-share contract has been vetted through a staff approval committee and meets NRCS standards for the applicable best management practice (BMP). The application has been advanced for due pass by the Board of Supervisors.

STAKEHOLDER INTERESTS

- District cooperators working with District farm management, forestry and aquatic area enhancement programs
- King CD Board members and staff
- NRCS

BACKGROUND

Witold Szczepaniak's property is 7.7 acres, 4.8 acres of which is forest habitat. The landowner's forest stewardship plan delineates the forest into two stands. Stand 1 is a mixed conifer deciduous lowland forest made up of mostly red alder, bigleaf maple and western redcedar trees. Stand 1 contains a forested wetland, riparian forest habitat, and upland forest habitat in its northeast corner. Canopy cover in Stand 1 averages 70% or higher with an understory of mostly native shrubs with patches of invasive blackberry, English Ivy, and reed canary grass. Stand 2 contains a wetland, a riparian forest buffer along a stream (May Creek), and upland forest habitat along the stand's western boundary. The forested areas outside the wetland in Stand 2 contains mostly mixed deciduous trees with a few conifer trees and some recently planted native tree seedlings. Stand 2 canopy cover is much more variable, the riparian forest buffer area has canopy cover between 50-70% and the wetland and upland areas have between 0 – 50%. Stand 2 contains large areas of dense invasive blackberry and reed canary grass but native shrubs and ground covers are also present.

This forest health management project scope of work covers an area of approximately 0.75 acres. Percent cover of invasive species is high, 60-80%, in three out of four of the project zones. This project will be focused on control of invasive species in project zones and establishing native conifer tree seedlings in each project zone and establishing native willow trees along the wetland/upland boundary. Initial project tasks will focus on preparation of each project zone for conifer tree seedling planting. These tasks will be followed by invasive species control using a combination of methods including mechanical, manual, and chemical. Post site preparation, native conifer tree seedling planting and installation of seedling protection should occur as described below. Approximately 200 new conifer tree seedlings and approximately 260 Sitka willow stakes will be planted as part of this project.

EFFECTIVE DATE

The cost-share award will become effective upon approval by the Board of Supervisors and the LIP contract will become effective upon signature by a Board representative.

King Conservation District Board of Supervisors Meeting 04/12/2021
Agenda Action Briefing/Report AI 21-028

RECOMMENDATION

Staff seeks Board approval of Landowner Incentive Program cost-share application from Witold Szczepanik, for Forest Health Management in the amount of \$15,886.88.

MOTION

_____ Moved, _____ Seconded; *Passed a motion to Approve KCD Landowner Incentive Program cost-share application from Witold Szczepanik, for Forest Health Management, in the amount of \$15,886.88.*

KING CONSERVATION DISTRICT (KCD) LANDOWNER INCENTIVE PROGRAM APPLICATION

Section 1. Applicant (If applicant is not the landowner, then landowner must also sign the agreement)

Applicant Name: Witold Szczepaniak		Farm/Business Name: None	
Mailing Address: 10898 Renton-Issaquah Rd SE, Issaquah, WA 98027		Project Address: Same	
Phone (home):		Phone (work/mobile): 206.380.3535	
Email Address: import1966@gmail.com		KCD Staff: Michael Lasecki	
Parcel #(s): 0623069013	<input type="checkbox"/> Incorporated <input checked="" type="checkbox"/> Unincorporated	Total Farm/Land Acreage: 7.7	<input type="checkbox"/> T.A. <input type="checkbox"/> Farm Plan <input checked="" type="checkbox"/> Forest Plan
Is email an acceptable primary form of communication?	<input checked="" type="checkbox"/> Yes <input type="checkbox"/> No	Would you like to be added to our newsletter list?	<input checked="" type="checkbox"/> Yes <input type="checkbox"/> No

Section 2. Project Information

Best Management Practice (BMP): Forest Health Management
Project Completion Date (month and year): 12/2024
<p>Current Site Conditions (Provide a brief summary of resource management problem addressed by BMP; also note if streams, wetlands, and steep slopes are near or within the project area):</p> <p>Witold Szczepaniak's property is 7.7 acres, 4.8 acres of which is forest habitat. The landowner's forest stewardship plan delineates the forest into two stands. Stand 1 is a mixed conifer deciduous lowland forest made up of mostly red alder, bigleaf maple and western redcedar trees. The stand contains a forested wetland, riparian forest habitat, and upland forest habitat in its northeast corner. Canopy cover in Stand 1 averages 70% or higher with an understory of mostly native shrubs with patches of invasive blackberry, English Ivy, and reed canary grass. Stand 2 contains a wetland, a riparian forest buffer along a stream (May Creek), and upland forest habitat along the stand's western boundary. The forested areas outside the wetland in Stand 2 contains mostly mixed deciduous trees with a few conifer trees and some recently planted native tree seedlings. Tree canopy species present</p> <p>Project Details (Provide a brief summary of the project. Include acres treated, length of fence, dimensions of compost bin, types and numbers of plants, etc.):</p> <p>This forest health management project scope of work covers an area of approximately 0.75 acre located in both Stand 1 and Stand 2. Invasive species present in the project area include Himalayan blackberry, butterfly bush, morning glory/bindweed, reed canary grass, vinca, Canada thistle, bull thistle, poison hemlock and herb robert. Percent cover of invasive species in Zones A, B, and C is high, 60-80%. Percent cover of invasive species in Zone D is lower <10%. Himalayan blackberry and morning glory/bindweed are present in all project zones and are the most prevalent invasive species in the project area.</p> <p>This project will be focused on control of invasive species in project zones and establishing native conifer tree seedlings in each project zone and establishing native willow trees along the wetland/upland boundary in zones A and D. Initial project tasks will focus on preparation of each project zone for conifer tree seedling planting.</p> <p>Maintenance Plan (Summarize your plan to maintain the practice. Include frequency and scope of inspections, repairs anticipated, etc.):</p> <p>Project maintenance will be completed by contractor as described in jobsheet for 3 growing seasons after tree installation and landowner will assist with maintenance of project during 3rd growing season before taking over maintenance of project completely for remainder of practice lifetime. Maintenance activities will include control of invasive species and replanting if survivorship falls below 80%. The landowner is responsible for maintaining the project and providing photo documentation for the remaining lifetime of the practice.</p>

Permits (List all permits required to complete this project):

No permits are needed if project is implemented as planned.

Photos: Before photos must be submitted with this application.

Section 3. Cost-share Programs

- A. Have you previously applied for cost-share through the KCD Landowner Incentive Program (LIP)? ☒ Yes ☐ No
If yes, please list contract number and BMP below:
Aquatic Area Buffer Planting, 2017-95 (Szczepaniak, W)

- B. Are you applying for (or received) funding (cost-share or grants) through other agencies or programs? ☐ Yes ☒ No
Please describe below:

1. **King County Cost-share**

Please list practices and date installed below:

2. **NRCS EQIP (Natural Resources Conservation Service's Environmental Quality Incentive Program)**

Please list practices and date installed below:

3. **Other**

Please list agency and describe project:

Other Cost-Share History/Notes:

Section 4. Budget (attached as Exhibit A)

The cost-share application budget is the applicant's statement for how the KCD cost-share funds will be spent. Use the attached Excel document to detail the budget for the project. Reimbursement values are restricted by unit maximums as well as practice maximums. KCD will be unable to provide a budget that exceeds either maximum. The cost differential for practices installed at a higher standard or cost shall be the responsibility of the applicant. In cases where a budget for a cost-share award needs to be updated, submit a budget revision request for approval. In the absence of an approved budget revision, the cost differential shall be the responsibility of the applicant. Furthermore, receiving financial assistance for an approved Best Management Practices will be subject to inspection by KCD planners. Approval for reimbursement will be based on the satisfactory completion of the project to the minimum specifications detailed in this application.

Partial reimbursements are available on a limited basis and must be requested in advance. They will only be considered when the installation of a project can be phased to achieve the standard described in the attached job sheet when reimbursement is requested.

- ☒ Select this box if you intend to request partial reimbursement as the project is installed.

Section 5. Education and Outreach

KCD encourages public education through demonstration projects. Demonstration projects are used to educate other landowners about innovative ways to address natural resource concerns. A demonstration project may be showcased in a guided tour, or featured in presentations or written fact sheets.

- Will you consider becoming a demonstration project?

☐ Yes ☐ No

Section 6. Maintenance and Monitoring Expectations

The applicant is responsible to maintain the Best Management Practice (BMP) to standard as detailed in the attached Job Sheet for the lifetime of the BMP.

☒ A. I understand the lifetime of the BMP is 15 years.

☒ B. I understand KCD will work with me to verify proper maintenance of the installed BMP, which will include a combination of site visits with KCD staff and/or annual photo documentation submitted by me for the lifetime listed in Section 7A.

☒ C. I understand I am obligated to maintain and monitor the BMP for the lifetime listed in Section 6A.

Section 7. Application and Agreement

I request financial assistance (cost-share) under the KCD LIP to install the Best Management Practice (BMP) described in this application and detailed in the attached *Job Sheet and Map*. This practice is needed to solve the natural resource problems described in Section 2 of this application. This Agreement expires if the project is not completed by the specified completion date in Section 2 or in an approved timeline revision request. W.S. (Initial Here)

I agree to ensure that all applicable local, state, and federal permits are obtained for installation of the BMP for which funds are requested. Furthermore, I understand that KCD must receive a copy of any applicable permit to process my cost-share reimbursement. W.S. (Initial Here)

I agree to work cooperatively with KCD to ensure the funded BMP is maintained consistent with the design life identified in the attached Job Sheet and in Section 6 of this application. W.S. (Initial Here)

I agree to indemnify, defend, and hold harmless KCD, its elected or appointed officials, employees and agents, from all claims, alleged liability, damages, losses to or death of person or damage to property allegedly resulting from the negligent or intentional acts of the applicant or any of its employees, agents, contractors or subcontractors in connection with this Agreement. W.S. (Initial Here)

I represent that the information provided in Section 3 of this application is a full disclosure of all other natural resource financial cost-share relationships in which I have or am participating. Furthermore, I agree to disclose if I am applying for or receive funding (cost-share or grants) for the BMP described in this application through other agencies or programs and to provide KCD with written documentation detailing this funding support. This may include copies of reimbursement checks or letters showing value of provided contribution. I understand that I must provide proof of reimbursement for alternate funding prior to receiving reimbursement through the KCD LIP. I acknowledge that KCD LIP funds cannot be used in combination with other funding sources to exceed 100% of project costs. I agree to allow communication between KCD and any other agency regarding the details of the project as well as funding details. W.S. (Initial Here)

I understand that LIP cost-share reimbursement is contingent upon installing the BMP to the minimum standard provided by KCD, and that KCD will verify standard compliance. Furthermore, I understand that changes to the installation details (attached *Job Sheet and Map*) must be approved through a *Scope of Work Revision Process*. Unapproved changes will not be eligible for reimbursement. W.S. (Initial Here)

I understand that there may be federal tax liability associated with a LIP cost-share reimbursement, and that KCD will issue a 1099-G for reimbursements made through the LIP. Furthermore, I understand that KCD cannot provide advice with respect to the tax liability associated with LIP cost-share reimbursements and that I have been advised to consult with my own tax professional.

WS (Initial Here)

I understand that I am applying for public funding and am responsible for notifying a buyer upon sale or loss of the property of the installed BMP. If I sell or lose control of the property covered by this Agreement and the new owner or transferee does not assume responsibility for maintaining the installed BMP as required by this Agreement, I may be required to refund all or a portion of the cost-share received through this Agreement. In the event of litigation arising from or related to this Agreement, attorney's fees and costs incurred by the prevailing party shall be paid by the non-prevailing party. WS (Initial Here)

I give permission to KCD to photograph my property to document the site conditions and/or the implementation and maintenance of the funded practice. In the event that I or any of my family members or dependents choose to be photographed in a setting that reflects the assistance provided by KCD, I give KCD permission to publish such photographs in KCD promotional literature, advertising, social media, and other public displays. The photographs will be the property of KCD and may be used by KCD at any time, in the manner described above, without my additional consent. WS (Initial Here)

I understand that this Agreement is subject to disclosure under the Public Records Act, Chapter 42.56 RCW. WS (Initial Here)

I understand that I will no longer be eligible for KCD cost-share funds if one or more of the following occurs: WS (Initial Here)

- The KCD funded BMP fails within its design life due to circumstances within my control (e.g., neglect, failure to maintain the BMP, destruction of the BMP before expiration of the design life, or other actions which cause the KCD funded BMP to become non-viable). *Note: Landowners are not responsible for BMP failure caused by circumstances beyond their control (e.g. fire, flood, storm damage, etc.).*
- I relinquish or lose ownership of equipment purchased with KCD cost-share.
- The KCD funded BMP is not being used for the intended purpose (e.g. cross fencing purchased with KCD funding, but no animals on property).
- I cancel 2 cost-share contracts awarded through the KCD Landowner Incentive Program.
- I deny KCD staff access to my property to verify BMP installation and maintenance.

I understand KCD will provide a sign free of charge after completion of a project, and I agree that: WS (Initial Here)

- I will select a visible location on my property for display of the sign and will install it.
- I will maintain the sign and keep it free of visual barriers for at least five years after installation.
- I am not responsible for damage to the sign that is beyond my control (e.g. auto accident, storm damage, vandalism, etc.)

Witold Szczepaniak

Witold Szczepaniak
Signature of applicant

Date

MAR. 20. 2021

Signature of Landowner (If applicant If Lessee)

Date

FOR KCD OFFICE USE

<u>WS</u>	04/02/2021	
Approved for Award (KCD LIP Coordinator)	Date	
Approved for Funding (KCD Management)	Date	LIP ID:



Landowner Incentive Program Applicant Budget

Cooperator: Szczepaniak

Budget Items	Units	Cost
Contractor Site Preparation	1.00	\$5,213.00
Contractor Planting and Plant Protection Installation	1.00	\$7,429.51
Contractor Maintenance	1.00	\$3,500.00
Replacement trees	1.00	\$500.00
Mulch from Sunset Materials - up to 100 yards	1.00	\$2,000.00
Bobcat rental for debris removal work - 2 days	1.00	\$800.00
Machinery Rental (not personally owned equipment)		
	Subtotal	\$19,442.51

In-Kind Labor/Machinery	# hours	Cost
Manual labor	60.00	\$ 1,200.00
Person with power equipment (i.e. chainsaw)		\$ -
Small Tractor (up to 40 hp)	12.00	\$ 540.00
Medium Tractor (40-70 hp)		\$ -
Large Tractor (71 or above hp)		\$ -
Excavator (up to 100 hp)		\$ -
Excavator (over 100 hp)		\$ -
D-4 Cat or equivalent		\$ -
D-6 Cat or equivalent		\$ -
D-7 Cat or equivalent		\$ -
Backhoe		\$ -
Truck (under 2 tons)		\$ -
Truck (2 tons or over)		\$ -
Bobcat		\$ -
4-wheeler or side-by-side		\$ -
Subtotal	72.00	\$ 1,740.00

Project Totals		
Total Cost (Budget Items + In Kind Labor/Machinery)		\$ 21,182.51
Units	Project	1.00
Cost/Unit		\$ 21,182.51

Conservation Practice	select BMP (x)	Cost Share Amount
Animal Trails & Walkways		
Aquatic Area Buffer		
Aquatic Area Buffer (WCC)		
Buffer Fencing		
Building Relocation for Aquatic Area/Buffer		
Bulkhead Removal (Freshwater, Marine)		
Cover Crops		
Cross Fencing		
Forest Health Management	x	\$ 15,886.88
Heavy Use Area Protection		
Pasture & Hay Planting		
Roof Runoff Management		
Stream Crossing		
Subsurface Drain		
Upland Wildlife Habitat Management		
Waste Storage Facility		
Watering Facility		

Amount eligible for reimbursement
(based on 2015 rates)

\$15,886.88

BMPs	Units	cost/unit	%	reimbursement rate	
Animal Trails & Walkways	sq ft	\$ 0.75	0.5	\$ 0.38	Ac.
Aquatic Area Buffer	project	\$ 30,000.00	0.9	\$ 27,000.00	AUE
Buffer Fencing	ft	\$ 12.00	0.75	\$ 9.00	Ft.
Building Relocation for Aquatic Area/Buffer	project	\$ 50,000.00	0.5	\$ 25,000.00	Sq. Ft.
Bulkhead Removal (Freshwater, Marine)	project	\$ 50,000.00	0.75	\$ 37,500.00	Project
Cover Crops	acre	\$ 150.00	0.9	\$ 135.00	
Cross Fencing	ft	\$ 6.00	0.5	\$ 3.00	
Forest Health Management	project	\$ 30,000.00	0.75	\$ 22,500.00	
Heavy Use Area Protection	AUE	\$ 1,400.00	0.5	\$ 700.00	
Pasture & Hay Planting	acre	\$ 325.00	0.5	\$ 162.50	
Roof Runoff Management	ft	\$ 7.00	0.5	\$ 3.50	
Stream Crossing	ft	\$ 1,100.00	0.75	\$ 825.00	
Subsurface Drain	ft	\$ 20.00	0.5	\$ 10.00	
Upland Wildlife Habitat Management	project	\$ 20,000.00	0.75	\$ 15,000.00	
Waste Storage Facility	AUE	\$ 1,000.00	0.75	\$ 750.00	
Watering Facility	project	\$ 50,000.00	0.5	\$ 25,000.00	



JOB SHEET

Forest Stand Improvement Tree/Shrub Site Prep & Establishment (Forest Management)

Landowner: Witold Szczepaniak	Lifetime of Practice: 15 Years
-------------------------------	--------------------------------

*This Job sheet must be attached to your completed application

Purpose (check all that apply)	
<input checked="" type="checkbox"/> Site preparation	<input checked="" type="checkbox"/> Tree/Shrub establishment
<input checked="" type="checkbox"/> Tree/Shrub stand improvement	<input checked="" type="checkbox"/> Restore native plant communities
<input type="checkbox"/> Long-term erosion control and improvement of water quality	<input type="checkbox"/> Increase the quantity and quality of forest products
<input checked="" type="checkbox"/> Wildlife habitat enhancement	<input type="checkbox"/> Other

Forest Management Practice and Details Provide the following: 1) attach a map delineating prescription area and sub-treatment areas if applicable; provide name and acreage features for treatment areas 2) descriptions of current stand location and conditions, stand treatment plan, plant species to be used, plant spacing, and site preparation; 3) a project management timeline from your approved Forest Stewardship Plan.

1) See attached project map

Project Area: ~0.75 acres

Zone A: ~0.28 acres, 12,000 ft²

Zone B: ~0.13 acres, 5,800 ft²

Zone C: ~0.12 acres, 5,000 ft²

Zone D: ~0.22 acres, 9,800 ft²

2)

Project Description: Witold Szczepaniak's property is 7.7 acres, 4.8 acres of which is forest habitat. The landowner's forest stewardship plan delineates the forest into two stands. Stand 1 is a mixed conifer deciduous lowland forest made up of mostly red alder, bigleaf maple and western redcedar trees. The stand contains a forested wetland, riparian forest habitat, and upland forest habitat in its northeast corner. Canopy cover in Stand 1 averages 70% or higher with an understory of mostly native shrubs with patches of invasive blackberry, English Ivy, and reed canary grass. Stand 2 contains a wetland, a riparian forest buffer along a stream (May Creek), and upland forest habitat along the stand's western boundary. The forested areas outside the wetland in Stand 2 contains mostly mixed deciduous trees with a few conifer trees and some recently planted native tree seedlings. Tree canopy species present include red alder, black cottonwood, bigleaf maple, western redcedar and Douglas-fir. Stand 2 canopy cover is much more variable, the riparian forest buffer area has canopy cover between 50-70% and the wetland and upland areas have between 0 – 50%. Stand 2 contains large areas of dense invasive blackberry and reed canary grass but native shrubs and ground covers are also present.

This forest health management project scope of work covers an area of approximately 0.75 acre located in both Stand 1 and Stand 2. Invasive species present in the project area include Himalayan blackberry, butterfly bush, morning glory/bindweed, reed canary grass, vinca, Canada thistle, bull

thistle, poison hemlock and herb robert. Percent cover of invasive species in Zones A, B, and C is high, 60-80%. Percent cover of invasive species in Zone D is lower <10%. Himalayan blackberry and morning glory/bindweed are present in all project zones and are the most prevalent invasive species in the project area.

This project will be focused on control of invasive species in project zones, establishing native conifer tree seedlings in each project zone, and establishing native willow trees along the wetland/upland boundary in zones A and D. Initial project tasks will focus on preparation of each project zone for conifer tree seedling planting. Removal of man-made debris (previous landowner's nursery materials, scrap wood, etc.) from project zones B and C will be completed first by landowner. Followed by invasive species control by contractor using a combination of control methods including mechanical, manual, and chemical as described below. Zones A, B and C may require 2 successive seasons of treatment before tree planting due to the high level of Himalayan blackberry infestation in these zones.

Additional site preparation work that should occur in Zones A, B, and C post initial treatment of invasive species is the application of arborist wood chips or other suitable mulch materials to a depth of 2- 4 inches where bare soil has been exposed by invasive species control and debris removal activities.

Post site preparation, native conifer tree seedling planting and installation of seedling protection should occur as described below. Installation of native willow live stakes along the eastern edge of Zones A and B will also be completed as part of this project. Approximately 200 new conifer tree seedlings and approximately 260 Sitka willow stakes will be planted as part of this project.

Post tree seedling planting, maintenance of planted areas will be completed by contractor as described below for 3 growing seasons after tree installation and landowner will assist with maintenance of project during 3rd growing season before taking over maintenance of project completely for remainder of project lifetime.

Soil type: EvC - Everett, Gravelly sandy loam, somewhat excessively drained

<i>Zones</i>	<i>Amount</i>	<i>Target Invasive Species</i>	<i>Season and year</i>	<i>Project Work</i>
SITE PREPARATION				
Zone A	~0.28 acres or 12,000 square ft	Himalayan Blackberry	Late Spring 2021 Summer / Fall 2021 Fall 2021	Invasive Species Treatment: Very tall and dense Himalayan blackberry covers most of this zone. Blackberry will be mechanically treated by contractor. Contractor will treat blackberry regrowth and other invasive species in zone with two herbicide applications, one in summer and a follow up treatment in fall. Herbicides used in this zone will be approved for aquatic use. Mulching: Landowner will spread Arborist wood chips or other suitable mulch material to a minimum depth of 2 inches over bare soil areas in zone prior to fall rains.

				<p>All invasive species control treatments performed should follow King County Noxious Weeds Best Management Practices when available.</p> <p>https://www.kingcountv.gov/services/environment/animals-and-plants/noxious-weeds/weed-control-practices/bmp.aspx</p>
Zone B	~0.13 acres or 5,800 square ft	Himalayan Blackberry, morning glory, Canada thistle, bull thistle, poison hemlock	<p>Spring 2021</p> <p>Late Spring 2021</p> <p>Summer / Fall 2021</p> <p>Fall 2021</p>	<p>Remove man-made debris from project zone: Landowner will remove as much man-made debris from project zone as possible to allow efficient invasive species control work by contractor.</p> <p>Invasive Species Treatment: Very tall and dense Himalayan blackberry covers most of this zone. Blackberry will be mechanically treated by contractor.</p> <p>Contractor will treat blackberry regrowth and other invasive species in zone with herbicide applications following King County Noxious Weeds best management practices.</p> <p>Mulching: Landowner will spread Arborist wood chips or other suitable mulch material to a minimum depth of 2 inches over bare soil areas in zone prior to fall rains.</p> <p>All invasive species control treatments performed should follow King County Noxious Weeds Best Management Practices when available.</p> <p>https://www.kingcountv.gov/services/environment/animals-and-plants/noxious-weeds/weed-control-practices/bmp.aspx</p>
Zone C	~0.12 acres or 5,000 square ft	Himalayan Blackberry, butterfly bush, morning glory, vinca	<p>Spring 2021</p> <p>Late Spring 2021</p> <p>Summer / Fall 2021</p> <p>Fall 2021</p>	<p>Remove man-made debris from project zone: Landowner will remove as much man-made debris from project zone as possible to allow efficient invasive species control work by contractor.</p> <p>Invasive Species Treatment: Very tall and dense Himalayan blackberry covers most of this zone. Blackberry will be mechanically treated by contractor.</p> <p>Contractor will treat blackberry regrowth and other invasive species in zone with a combination of manual control and herbicide applications following King County Noxious Weeds best management practices.</p> <p>Mulching: Landowner will spread Arborist wood chips or other suitable mulch material to a minimum depth of 2 inches over bare soil areas in zone prior to fall rains and will apply any</p>

				<p>leftover wood chips in Zone C south of established Douglas-fir trees' drip line where new row of tree seedlings will be planted.</p> <p>All invasive species control treatments performed should follow King County Noxious Weeds Best Management Practices when available. https://www.kingcounty.gov/services/environment/animals-and-plants/noxious-weeds/weed-control-practices/bmp.aspx</p>
Zone D	~0.22 acres or 9,800 square ft	Himalayan Blackberry, morning glory	Summer / Fall 2021	<p>Invasive Species Treatment: Himalayan blackberry is less dense in this zone and will be controlled with a combination of grubbing out root balls and herbicide application to blackberry as a foliar spot spray or cut and paint canes treatment by contractor.</p> <p>Morning glory will be treated by spot spraying herbicide onto plants when they are growing rapidly. Herbicides with Triclopyr or Glyphosate as their active ingredient should be effective. https://wric.ucdavis.edu/information/natural%20areas/wr_V/Vinca.pdf</p> <p>All invasive species control treatments performed should follow King County Noxious Weeds Best Management Practices when available. https://www.kingcounty.gov/services/environment/animals-and-plants/noxious-weeds/weed-control-practices/bmp.aspx</p> <p>Herbicides used in this zone will be approved for aquatic use.</p>
Zone E				<p>No activities will be done in Zone E as part of this project. This zone is being treated as part of a separate KCD Riparian Project.</p>
TREE SEEDLING PLANTING				
Zone A			<p>Winter 2021</p> <p>or</p> <p>Early Spring 2022</p>	<p>Planting Specification: Conifer tree plant material may be potted seedlings, plugs, or bareroot material sourced from the Puget Sound region. Tree species will be planted in appropriate microsites within project zone by contractor. Sitka willow live stakes should be sourced from the Puget Sound region, be ¾ to 1-inch in diameter, and a minimum of 32 inches in length.</p> <p>Conifer tree seedlings will be planted at 10 feet on center from one another and from the dripline of established trees.</p>

				<p>Approximately 80 tree seedlings are expected to be needed to replant this project zone.</p> <p>Plant zone at a species ratio of 20% western redcedar, 40% grand-fir and 40% Douglas-fir tree seedlings.</p> <p>Sitka willow live stakes will be planted at 3 feet on center in two off set rows along eastern edge of Zone into reed canary grass. Approximately 140 willow stakes are expected to be needed for this zone.</p> <p>Plant Protection Specification: Each western redcedar seedling installed in zone must have browse protection installed on it. Half the number of western redcedar seedlings in project zone will have 4 foot high vexar tubes with 2 bamboo stakes installed on them and half the western redcedar seedlings will have 2.5-3 foot diameter by 5 feet high 14 gauge welded wire fencing cages installed with steel t-posts anchoring cages to ground.</p>
Zone B			<p>Winter 2021</p> <p>or</p> <p>Early Spring 2022</p>	<p>Planting Specification: Plant material may be potted seedlings, plugs, or bareroot material sourced from the Puget Sound region.</p> <p>2 – 3 offset rows of seedlings at 8-10 feet on center from one another will be planted by contractor between public road and property's access road. Approximately 60 tree seedlings will be planted in this zone.</p> <p>Zone will be planted with a mix of Douglas-fir and shore pine seedlings. Plant shore pine in southern most row closes to property access road.</p>
Zone C			<p>Winter 2021</p> <p>or</p> <p>Early Spring 2022</p>	<p>Planting Specification: -Contractor completes Plant material may be potted seedlings, plugs, or bareroot material sourced from the Puget Sound region.</p> <p>1-2 offset rows of tree seedlings at 8-10 feet on center from one another will be planted by contractor just south of established Douglas-fir trees in project zone. Approximately 20-30 tree seedlings are expected to be needed to replant this project zone.</p> <p>Plant zone with a mix of Douglas-fir and shore pine seedlings. Plant shore pine in southern most row where there is room for 2 rows.</p>

Zone D			<p>Winter 2021</p> <p>or</p> <p>Early Spring 2022</p>	<p>Planting Specification: -Contractor completes</p> <p>Conifer tree plant material may be potted seedlings, plugs, or bareroot material sourced from the Puget Sound region. Plant conifer tree species in appropriate microsites within project zone. Sitka willow live stakes should be sourced from the Puget Sound region, be ¾ to 1-inch in diameter, and a minimum of 32 inches in length.</p> <p>Contractor will plant 1-2 offset rows of conifer tree seedlings at 8-10 feet on center from one another between road right of way tree canopies and pond.</p> <p>Approximately 40 conifer tree seedlings are expected to be needed to replant this project zone.</p> <p>Plant zone at a species ratio of 40% western redcedar, 40% grand-fir and 20% western hemlock tree seedlings.</p> <p>Sitka willow live stakes will be planted at 3 feet on center in two off set rows along eastern edge of Zone. Approximately 120 willow stakes are expected to be needed for this zone.</p> <p>Plant Protection Specification:</p> <p>Each western redcedar seedling installed in zone must have browse protection installed on it. Half the number of western redcedar seedlings in project zone will have 4 foot high vexar tubes with 2 bamboo stakes installed on them and half the western redcedar seedlings will have 2.5-3 foot diameter by 5 feet high 14 gauge welded wire fencing cages installed with steel t-posts anchoring cages to ground.</p>
PROJECT MAINTENANCE – 3 Years				
Zones A,B,C, D			<p>Early Summer / Fall 2022, 2023, 2024</p>	<p>For first two growing seasons after tree seedling planting has been completed contractor will inspect project zones and complete follow up maintenance of project.</p> <p>For third growing season after planting landowner will assist contractor with inspection of project zones and completing follow up maintenance of project.</p> <p>Maintenance work should include follow up treatment of any regrown target invasive species in project zones, cutting back competitive vegetation growing over planted seedlings, adjust or replace tree protection, and replanting tree seedlings as needed so at least 80% of original number planted are growing in each project zone.</p>

3)

Management Plan Implementation Timetable

Estimated Implementation Year	Practice/Activity	Location (Stand ID)	Acres	NRCS Practice Code (if applicable) ¹	Comments	Year Completed
2017	Complete Farm Plan	Ag Area			Aided by Jay Mirro	2017
2017	Complete Forest Plan	Stand 1 and 2	4.8		Aided by Mike Lasecki	2017
2017-2018	Enroll areas of property into PBRs tax program	Stand 1 and 2	4.8			
2017-2018	Start KCD Riparian Enhancement Project	Stand 2	1	391	Aided by Jacobus Saperstein & WCC	2018
2017-2018	Scope out Forest Health Management Project	Stand 1	TBD		Aided by Mike Lasecki	2020
2017-2018	Implement invasive species control	Stand 1 and Stand 2	TBD	314	May be completed by WCC crew and/or contractor as part of cost-share projects	2018-2020
2018	Complete site prep and plant riparian areas	Stand 2	1	391, 490, 612	Completed as part of KCD riparian enhancement project by WCC	2019-2020
2021	Complete site prep and conifer seedling planting	Stand 1	TBD	490, 612, 666	Will be completed as part of a KCD forest health management project by contract crew	
2019-2021	Annual monitoring and follow up maintenance work as needed for riparian and forest plantings	Stand 1 and 2	TBD	314	Will be completed by WCC and contract crew as part of KCD projects	2019,2020
2019-2021	Establish and maintain dedicated foot trails through stands	Stand 1 and 2				
2021-2027	Monitor stands for forest health concerns, maintain plantings and trails.	Stand 1 and 2				
2022	Review plan with KCD staff to see if updates need to be made	Stand 1 and 2			Size of Stand 2 expanded and updates to implementation timetable	2020
2027	Review plan with KCD staff to see if updates need to be made	Stand 1 and 2				

Permits *Are there any permits necessary for the project? If so, please list below and include a copy of the permit.*

No permits are needed for this project if it is implemented as designed, project area is covered by a county-approved forest stewardship plan, activities are regulated by WA State Forest Practice Rules and all project activities are class 1 forest practices.

Landowner must comply with local, state and federal regulations and permitting requirements.

1) Forest landowners may need a permit from the WA State DNR for forest management activities

<http://www.dnr.wa.gov/businesspermits/forestpractices/Pages/Home.aspx>

Or

From through the Forest Practices Rules, see the King County specifics here:

<http://www.co.king.wa.us/property/permits/info/SiteSpecific/forest.aspx>

2) There may be permits needed to apply herbicide near aquatic areas or their buffer. See the WA State Department of Ecology website for further details: <http://www.ecy.wa.gov/programs/wq/pesticides/>

Type and Source of Plant Material *Will you use potted plants, bareroot plants, b&b plants or a combination? Where will you get the plants from and when?*

Plant material will be native species adapted to the site to minimize maintenance and care.

Habitat Restoration Specialists, LLC the contractor, will procure and plant bareroot, plug, or potted conifer tree seedlings up to 1-gallon in size that have been sourced from the Puget Sound. Sitka willow live stakes will be sourced from the Puget Sound region, be ¾ to 1-inch in diameter, and a minimum of 32 inches in length.

If additional plant material is purchased to augment the original planting, that material can be bareroot, live stake, potted nursery stock or ball and burlap inventory.

There are a number of local native plant nurseries where native trees, shrubs and emergents can be purchased. Refer to the list of native plant nurseries for local King County sources of native plant material as well as sources in the greater Puget Sound region at the following link: <https://kingcd.org/wp-content/uploads/2019/11/KCD-Native-Plant-Nurseries-List-2020.pdf>.

Site Preparation *List what method(s) of site preparation will be used, who will be doing the work, when will the work be done.*

Site preparation will include a combination of removing man-made debris from project zones A, B, and C which will be completed by landowner, invasive species control which will be completed by contractor, and applying woodchip mulch to bare soil areas in Zones A, B, and C by landowner. Non-native/invasive species control will target Himalayan blackberry, morning glory, butterfly bush, vinca, invasive thistles and scotch broom. Specific weed control prescriptions are detailed below. Note: A permit may be required when performing weed control with or without herbicide in or near an aquatic area and its buffer.

**It recommended that landowners work with a professional licensed herbicide applicators for applications in sensitive areas or with difficult to remove species. It may be that some of the following formulations are only available for sale to a licensed applicator.*

Initial Man-made Debris Removal:

Landowner will complete removal of man-made debris left by previous landowner in project zones A, B, and C through a combination of landowner's in-kind manual labor, landowner's use of personal tractor, and if necessary the assistance of a junk removal contractor. Landowner will complete this initial site preparation activity prior to hired contractor, Habitat Restoration Specialists, LLC, beginning invasive species control work.

Weed Control Prescriptions:

Himalayan & Evergreen Blackberry Control –

- *Manual control:* Mow or cut the blackberry canes to less than 1 foot in height, then grub/dig out the roots attached to the cut canes. Thorough removal of blackberry roots in this manner, while labor intensive can reduce the blackberry population and cover in the prepared area by 90 – 95%. Monitor for re-growth in the following growing seasons; dig up any re-growth.
- *Chemical Control:* An alternative control method includes herbicide. One technique involves cutting/mowing the canes and swabbing the freshly cut canes with an approved herbicide. Foliar spray of blackberry is another effective control method. It is recommended that blackberry is mowed early in the summer and sprayed on the foliar re-growth the next fall (September/October). Do not spray planted seedlings. **Always follow label rates and instructions.**

Morning Glory/Bindweed Control-

- *Manual Control:* Manual control of bindweed is difficult and must span many growing seasons. Bindweed has extensive root and rhizome systems that can live without light and re-sprout from small fragments, thus avoid digging or tilling soil around mature bindweed. Hand pulling of plant will eventually work if done regularly and over multiple years. Be sure to pull plant before it has produced seeds. Mowing is not recommended.
- *Chemical Control:* Chemical control of bindweed is difficult and must span multiple growing seasons. As bindweed grows around desirable plants, herbicides can painted or brushed on foliage to reduce drift. Products with the active ingredient glyphosate are effective when applied in the summer and fall before the leaves die back. This product is non-selective and will kill other foliage and grass it comes into contact with. Other effective active ingredients include triclopyr and 2,4-D. Repeat applications of herbicide may be needed. **Always follow label rates and instructions.**

Vinca Control- Treatment of Vinca should follow the same prescriptions described for Morning Glory/Bindweed Control.

Butterfly Bush-

- *Manual Control:* Seedlings can be hand-pulled with little effort, and larger plants can be cut. Branches should not be left on the bare ground as they can form roots and re-grow. Never discard any part of this plant in natural areas or on roadsides. Branches can be burned, put in your yard waste container, or taken to a landfill or composting facility. Seed heads should always be placed in the trash.
- *Chemical Control:* Controlling butterfly bush by spraying with a brush-control herbicide is somewhat effective, but for better results, cut the trunk off at the base and immediately apply concentrated glyphosate or triclopyr on the freshly cut surface. **Always follow label rates and instructions.**

Poison Hemlock-

- *Manual Control:* For small sites, pull or dig up plants. Remove entire root. Wear protective clothing and wash your hands thoroughly after handling plant matter. To be fully effective, all mature plants need to be removed so no new seeds are produced. Do not leave flower heads on the ground as the seeds can remain viable. Composting is not recommended; instead place in a plastic trash bag and toss into your regular trash.
- *Mechanical Control:* To prevent seeding, plants can be mowed or cut back with a weed-eater before going to flower. Protect yourself with a dust mask to avoid inhaling toxins while mowing. Adding a layer of mulch to the area after it has been cleared or replanting with desirable vegetation will reduce germination of poison hemlock seeds present in the soil. Monitor mowed areas as plants often grow back after being mowed.
- *Chemical Control:* Follow labels exactly as written and only use products appropriate and legal for the site. Herbicides should only be applied at the rates specified on the label. Foliar herbicides are most effective if applied to actively growing plants in the spring, followed by another application later in the summer for late sprouts. Spray plants before they flower for best results. Spraying may

not prevent seed production in mature plants. A selective broadleaf herbicide with the active ingredient triclopyr, 2,4-D or metsulfuron will work well for lawn or pasture areas as it won't harm grasses. Glyphosate products (such as Roundup) work also but they kill grass as well as broadleaf plants. Apply the herbicide to the entire leaf and stem surface and do not cut down the treated plants until they have died. This may take two weeks or more. Seeds germinate throughout the season, so repeat treatment is necessary to eliminate all plants. Chemical control options may differ for private, commercial and government agency users. **Always follow label rates and instructions.**

Bull Thistle-

- *Manual Control:* For small sites with few plants, pull or dig up rosettes or the bolted plants before seed heads form. To avoid the plants' pervasive spines, chopping the leaves from one side of a rosette can provide access to the central growing point. Wear protective clothing including eye protection. To be fully effective, all mature seed heads need to be removed so no new seeds are left on the site.
- *Mechanical Control:* Mowed thistles will produce new branches from basal buds but close mowing or cutting twice per season will usually prevent seed production. For more effective control, cut plants with a sharp shovel at 1" to 2" below the soil surface before flowering. Clean equipment and take care to avoid spreading seeds to un-infested areas. Plants can also be controlled by cultivation and tilling.
- *Chemical Control:* Follow labels exactly as written and only use products appropriate and legal for the site. Herbicides should only be applied at the rates specified on the label. Selective broadleaf herbicides work well for areas with grass. Dicamba, triclopyr, aminopyralid or 2,4-D work best applied in spring before stem elongation and again in the fall to control rosettes. Metsulfuron can be applied anytime plants are actively growing and clopyralid can be applied up to bud stage. (Metsulfuron may cause some damage to perennial rye and fescues.) Non-selective herbicides such as glyphosate (Round-up) can be used where damage to grasses is not a concern. Control will improve with the addition of a suitable surfactant. Do not cut treated plants until they have died. This can take two weeks or more. **Always follow label rates and instructions.**

Canada Thistle-

- *Manual Control:* Although seedlings are easily removed, digging established plants is not practical because of the far-reaching horizontal roots and deep vertical ones. For best results, cut plants when they have the least root reserves, which is when they have formed tight green buds (usually by June). Cut the regrowth each time buds reappear. This approach will weaken the roots over time. For new infestations, carefully dig up young plants before they become established. Make sure to remove all mature seed heads so no new seeds are left onsite.
- *Mechanical Control:* Do not cultivate or till until plants have been controlled. Each root fragment can grow into a new plant. Mowing or clipping at the bud stage can be effective and should be repeated on regrowth to weaken roots. Combining fall herbicide treatment on regrowth after mowing has been effective. Mowing once a year is not effective. Seeds can develop 8-10 days after flowers open, so mowing before buds open is best. Clean equipment and avoid spreading mature seeds and/or root fragments to uninfested areas.
- *Chemical Control:* Follow label directions, only using products appropriate and legal for the site at specified rates. Addition of a suitable surfactant to the spray mix will improve control. In pastures, use selective broadleaf herbicides that won't harm grasses. Avoid spraying drought-stressed plants or spraying just before a hard frost. Effectiveness of herbicides is increased when roots are weakened by mowing or previous treatments. Control entire infestation, since roots will spread from uncontrolled areas into adjacent controlled areas. Soil-active selective broadleaf herbicides containing dicamba, clopyralid, and aminopyralid, as well as combination products clopyralid+2, 4-D and clopyralid+triclopyr work well when applied to actively growing thistles in spring pre-bud or in fall. (These soil-active herbicides should be used only in pastures and non-crop areas.) Triclopyr, 2, 4-D, and combination products such as 2, 4-D+dicamba or 2, 4-D+triclopyr are most effective when applied at or just before bud stage. Glyphosate is very effective when applied from

after bud stage until fall frost but is non-selective and will kill grasses. Wait at least 3 days to cut or till plants treated with glyphosate. **Always follow label rates and instructions.**

Reed Canary Grass Control –

- *Manual Control:*
 - Mowing reed canary grass depletes carbohydrate root reserves, and if done repeatedly it will result in the thinning or death of the grass. The ideal time to mow is at or near the flowering stage. The grass should be cut as near to the ground as possible (1 inch or lower). Twice yearly mowing (in early-mid June and early October) has shown increased survivorship of native plants planted into reed canary.
 - Shading is highly effective in reducing reed canary grass stands. A dense planting of conifers, once established, is ideal for shading. Faster growing deciduous trees and shrubs, especially those that develop foliage in the early spring, combined with an under-planting of conifers can be effective. Artificial methods of shading can be used in conjunction with native plantings. Sheets of thick cardboard or landscaping fabric placed around each individual plant should be secured to the ground by long staples or stakes and covered with 5-6 inches of mulch. The combination of sheeting and mulch provides temporary suppression of the grass, allowing the desirable vegetation to thrive without competition. *Not recommended for flood prone areas.*
- *Chemical Control:* Herbicide can be effective in elimination of Reed Canary grass when properly applied. Studies show that spraying Glyphosate (the active ingredient in products such as ®Rodeo) after a stand is mown or when the grass has the minimum available carbohydrate reserves (after flowering) is an effective control method. Follow-up spraying the next year may be necessary to eliminate the remaining grass. **Always follow label rates and instructions.**

Care and Temporary Storage of Purchased Plant Material *Upon receiving the plant material, where will you store it and how will you care for it?*

All plant material should be stored in a cool location and well watered prior to planting. In the case of bare root plants, inventory should be held in the source refrigerated facility as long as possible prior to planting. Bare root plants can be stored in the field for up to one to three weeks prior to planting by placing them in a shaded location where they will remain cool. Such a location should prevent freezing as well as exposure to warm temperatures. Additionally, bareroot inventory should be covered with a tarp to prevent drying. Bareroot stock that is expected to emerge from dormancy prior to planting should be “healed” into a soil bed. To heal-in, dig a v-shaped trench to a depth that accommodates covering the seedling roots when back-filled with soil.

Installation *Provide the following details: 1) Plant Installation Prescription: 2) Plant Protection Prescription: 3) Weed Suppression Prescription: 4) Erosion Control Prescription*

1) Plant Installation Prescription:

Live Stake Inventory: Live Stakes should be planted using a planting bar if soil is too hard for direct planting. Stakes are to be 3 to 4 feet long, and a minimum of ¾ inch in diameter. Stakes should be stored in a bucket of water until planted. Buds should face up in the bucket. Soaking before planting greatly increases the survival of live stakes. Refer also to the planting instructions at the following link: <https://kingcd.org/wp-content/uploads/2018/05/Hardwood-Stakes-2017.pdf>

Potted & Plug Inventory: Potted plant material should be shovel planted to the same depth that they grew in the pot. Plants will be well watered prior to planting. Prior to digging a hole for the plant, prepare the planting location by removing a grass sod within a 1.5 feet diameter circle, being careful to remove roots as well as above ground portions of the plant. Dig a hole for the container in the center of this cleared circle twice the size

of the plant's pot. Backfill the hole with soil while using care to avoid leaving air pockets in the soil. Refer also to the planting instructions at the following link: <https://kingcd.org/2019/12/12/how-to-plant-potted-trees-and-shrubs/>.

Bareroot Inventory: Bare root seedlings should be shovel planted to the same depth that they grew in the nursery fields. Roots will remain moist once they are removed from the shipping bundles until they are planted. Roots will be placed in a natural position in the soil without being crowded or turned up. Soil will be packed firmly around the root system, leaving no air pockets. Prior to digging a hole for the plant, prepare the planting location by removing all grass sod within a 1.5-foot diameter circle, being careful to remove roots as well as above ground grass. Dig a hole for the bare root plant in the center of this cleared circle. Refer also to the planting instructions at the following link: <https://kingcd.org/wp-content/uploads/2019/12/Bareroot-Plants-2020.pdf>.

2) Plant Protection Prescription:

Tree Protectors (for sites where deer/elk browse is anticipated): Install Plastic Mesh or netted deer sleeves on half of the newly planted Western Red Cedar to protect trees from deer browsing. Weave 6 ft bamboo stakes through each tube and shove at least 8 inches into the ground in order to stabilize the mesh tubes and keep them on trees. The tube must be tall enough to protect terminal bud; be sure that the terminal bud is a couple inches lower than the top of the tube. Each year the tube should be pulled up to cover the terminal bud as the tree grows. Keep tubes on until terminal bud is above the deer browse level, approximately 5 feet tall. Make sure side branches within the tube are positioned vertically to allow for successful growth. Other half of western redcedar trees installed will be protected with 14-gauge wire fence enclosures supported by steel t-posts and secured with zip ties.

As the trees mature, inspect them periodically for damage from deer rubbing. If rub is occurring, steps should be taken to ensure 80% survival target is reached. Effective techniques include temporarily fencing trees with woven fencing or chicken wire or installing one or two steel posts next to a tree. Flared bases on posts should be set in-line with the trunk to reduce root damage when driven in. Posts are especially effective in protecting smaller trees, and light gauge steel types 4 to 6 feet long can be used.

3) Weed Suppression Prescription

Mulching: In locations where ongoing weed suppression becomes a concern apply a layer of mulch to a depth of 2-4 inches around seedlings. Keep mulch in a doughnut shape around tree seedlings by staying a hands-width away from the trunk. If areas are poorly drained, keep mulch depth to 2 inches. Mulching options include wood chips, fully composted organic material such as a commercial compost product or weed free straw. Mulch should be weed free, if possible, to avoid introducing new weeds to the project site.

Weed and Competitive Vegetation Control: Project plantings should be inspected each growing season after they are installed and control of weed regrowth and competitive vegetation completed to maintain tree seedling vigor. A combination of manual, mechanical, and chemical treatments may be used to control weed regrowth and competitive vegetation around planted tree seedlings. Contractor will complete control of weed regrowth and competitive vegetation the first two growing seasons after plant installation. Landowner will complete control of weed regrowth and competitive vegetation from the third growing season on to end of practice lifetime.

4) Erosion Control Prescription

Mulch: In addition to weed suppression mulch products are effective for preventing soil erosion. Materials that will be used for erosion control mulch on this project will include arborist chips and chipped site vegetation (must not include live invasive plant material). Product will be applied 2 inches thick at a minimum on bare soil areas in Zones A and B.

Planting Project Maintenance and Monitoring *The planting must be inspected periodically and protected from damage so proper function is maintained. The goal for the project is to reach 80% survival after 3 years. Please describe the maintenance and monitoring plan.*

Treatments must be inspected periodically and protected from damage so proper function is maintained and resource damage is minimized, including assessment of insects, disease and other pests, storm damage, and damage by trespass. The results of inspections shall determine the need for additional treatment under this practice.

Replace dead or dying trees and control competing vegetation to support successful establishment of trees so target survival percentage by end of 3rd growing season is 80%. Periodic application of mulch may be needed to maintain plant vigor. Periodic harvest of trees and shrubs (thinning and brushing) may be necessary to maintain the health and vigor of the planted tree seedlings and support their development toward more mature stand conditions. Keep large dead and dying trees for cavity nesting wildlife and bird species and as a source of downed wood in the forest understory and in adjacent or interior aquatic habitats.

Where droughty soils and hot growing conditions are anticipated, supplemental watering is recommended. In such cases the District recommends watering planted nursery stock for a minimum of 3 summers following planting. Young bare root, container, and ball/burlap plants have a reduced root system that hampers their ability to survive during the dry spring or summer months. Watering a minimum of once every two weeks during the dry summer will promote greater rates of survival. Watering once per week is preferable.

Monitor treatment areas for re-growth of non-native/invasive species and control accordingly. Utilize weed control techniques prescribed in the Site Preparation section of the Job Sheet. Species to monitor include all those listed in the Site Preparation section and any listed King County Noxious weeds.

Additional Specifications and Notes:



Legend

Property Boundary

Access Road

Forest Stand

Stand 1

Stand 2



Witold Szczepaniak Forest Cost-share Project Map 10898 Renton-Issaquah Rd SE, Issaquah, WA


260 130 0 260 Feet



1:1,462

DISCLAIMER: While every precaution was taken in preparing this map, the publisher disclaims any warranty of fitness or accuracy of the data. The map is approximate in nature, based on compilation of data from multiple sources, and should not be relied upon or referenced in legal documents, including property deeds, title reports, and contract documents, nor substituted for appropriate survey and/or engineering analysis. The user of the map acknowledges its limitations, assumes all responsibility for its use, and agrees to hold the publisher harmless for any damages that may result from the use of this map. This map is subject to change without notice.

KCD Planner: Mike Lasecki
Copyright ©2020 King Conservation District
March 08, 2021

Witold Szczepaniak 10898 Renton-Issaquah Rd SE Issaquah WA. 98027 FHM- Cost Estimate		Prepared by Habitat Restoration Specialists, LLC. P: 206.459.0586 E: derekb@habitatrestoration.com.co Date: 1.7.20 Updated 3.8.21 Contact: Derek Beauchemin, 206-459-0586
<i>Itemized breakdown, per site visit with Witold Szczepaniak and Derek Beauchemin and KCD FHM Scope of Work as a guide. Latest plan is dated 3.8.21 and these costs are based on this plan.</i>		
Task	Cost	Scope of Work and Timing of treatment
Zone A, B, C, D Blackberry knockdown and herbicide treatment	\$4,333.00	This task will include the mechanical knockdown of all blackberry plants within the project zones requiring treatment. All knocked down material will be cut into pieces no larger than 36" and left on site to compost in place. A herbicide herbicide treatment will follow knockdown by a period of 6-8 weeks depending upon regrowth. Initial knockdown will occur in Spring 20201 with herbicide treatments occurring in summer and again in fall. This task is sisted to take 4 days with two days of herbicide treatments.
Zone A, B,C, D "Other" Identified weed Treatments	\$880.00	This task will include the herbicide treatment of all other weeds found within the project sites including: invasive thistles, morning glory, butterfly bush and herb Robert. These tasks will occur during summer months and prior to flowering periods. Best Management Practices will be followed when treating these populations. All herbicides employed will be rated for WSDA Aquatic Use. Herbicide records will be available upon request.
Plant Installation-Cedars	\$1,804.00	Thirty-two <i>Thuja plicata</i> trees will be installed in project zones A & D. Half of the trees will receive vexar tubes and bamboo stakes with the other half receiving 14 gauge wire fence enclosures suported by steel t-posts and secured with zip ties. This cost is a considered a Not To Exceed amount and will depend upon tree availability and size class. Size classes will range from bare roots to 1 gallon trees.
Plant Installation-Pine, Fir, Hemlock and Willow	\$5,625.51	This task will include the installation of <i>Abies grandis</i> (48), <i>Tsuga heterophylla</i> (8), <i>Pinus contorta</i> (45) and <i>Psuedotsuga menziesii</i> (77). Willow trees will live stakes per the specifications of KC FHM plan. Trees will be dividied up per zones A-D per scope of work. This cost will be considered a Not To Exceed amount and will depend upon tree availability and size class. Size classes will range from live stakes bare roots and 1 gallon trees.
Maintenance	\$3,500.00	This task will include the maintenance of entire project site to Incude but not limited to treatment of invasives, browse protection maintenance and any other small tasks related to proejct success. This task does not include any replanting of plant material due to damage or mortality. This task is to be conducted over 3 years per the specifications submitted to HRS and as laid out by KCD FHM Scope of Work. This cost can be considered as a Not To Exceed line item should be reduced over the years. Tree replacement will cost on average \$21.00 per tree, if needed.
Total:		\$16,142.51

- WA State sales tax **not** included

Zone A



Zone B



Zone D



Zone C

Zone B



**King Conservation District Board of Supervisors Meeting
Agenda Action Briefing/Report
Meeting Date: April 12, 2021**

SUBJECT: AI: 21-029

- Motion to approve the Member Jurisdiction grant application from the City of Mercer Island for the Luther Burbank Park South Shoreline Restoration project

FISCAL IMPACT

- The applicant is requesting \$90,000 from Mercer Island KCD-Member Jurisdiction funds

POLICY CONSIDERATION

- The proposal meets the following natural resource improvement actions which are criteria for funding from the grant program
 - Education and Outreach
 - Direct Improvement of Natural Resources
 - Capacity Building
 - Pilot and Demonstration

STAKEHOLDER INTERESTS

- See grant application

BACKGROUND

- The grant subcommittee reviewed this application at their March 22nd meeting. They enjoyed the photos provided and did not have any concerns about the project proposal.

EFFECTIVE DATE:

- If approved, this Motion becomes effective on the date of approval.

OPTIONS

- Vote in favor or not in favor of approving the consent agenda.
- Request that this item be removed from the consent agenda for discussion.

RECOMMENDATION

- The grant subcommittee recommends approval of this grant application.

MOTION

- Motion to approve the Member Jurisdiction grant application for \$90,000 from KCD-Mercer Island Member Jurisdiction 2015-2021 funds for the City of Mercer Island-Luther Burbank Park South Shoreline Restoration

Luther Burbank Park South Shoreline Restoration

Member Jurisdiction Grant Program

City of Mercer Island

Ms. Alaine Sommargren
9611 SE 36th St
Mercer Island, WA 98040

cityclerk@mercerisland.gov
O: 206-275-7600

Paul West

9611 SE 36th St
Mercer Island, WA 98040

paul.west@mercerisland.gov
O: 206-275-7833
M: 206-459-5434

Application Form

Summary Information

Project Title*

Luther Burbank Park South Shoreline Restoration

Project Description - Short*

Provide a short, concise description of the project no more than two or three sentences.

This shoreline restoration will improve lake water quality and nearshore fish habitat using habitat gravel and large woody debris. The project also relocates a trail with ADA compliance, removes invasive plants, and installs new native plantings.

Principal Partners (if any)

Mountains To Sound Greenway, Friends of Luther Burbank Park

Amount of KCD Funding Requested*

You will need to upload a detailed budget document before you submit your application. Please make sure the amount requested and total project cost amounts you list here match the amounts in the uploaded budget document.

\$90,000.00

Total Project Cost*

\$603,000.00

Total Matching Funds (optional)

Project Start Date*

04/01/2022

Project End Date*

12/31/2023

Close Date

Project Location*

Address, Parcel #, OR L&L Points, for site specific projects only.

If more than two locations, state "multiple" and explain.

2040 84th Ave SE, Mercer Island, WA 98040

Lat: 47.59015° N

Lon: 122.22442° W

PIN: 0624059014

Jurisdiction

If the applicant is not a city or jurisdiction, please type in the city or jurisdiction this project is located in.

Mercer Island

Is your project on public or private land?*

Public

State Legislative District #*

Click here to find it on the web. If your project resides in more than one district, type in the primary district or type in zero.

41

King County District #*

Click here to find it on the web. If your project resides in more than one district, type in the primary district or type in zero.

6

Narratives, Budget, & Attachments

Project Description - Detailed*

Provide a description of the project that summarizes what you will do, how you will do it, and why you will do it. Describe target audience, outcomes, objectives and general timelines.

The Project's main habitat component is an in-water shoreline restoration to improve lake water quality and nearshore fish habitat. The shoreline restoration includes placing a 785-linear-foot layer of habitat gravel and intermittent large woody debris (LWD) along the shoreline of the entire project area to improve nearshore habitat function and address ongoing erosion. Existing in-water LWD will remain in-place. The Project also includes: upland trail relocation of an existing 800-linear-foot trail to meet Americans with

Disabilities Act (ADA) compliance, invasive plant removal, selective tree removal, and planting along the existing south shoreline trail footprint to improve the existing riparian buffer. The planting area will be irrigated and maintained to enhance shoreline plant cover.

The shoreline of Lake Washington has been eroding since the lake was lowered in 1916. Most of the lake shoreline has been hardened to prevent erosion. Unarmored shoreline is rare and valuable habitat for migratory salmon. Out-migrating juveniles seek refuge from predation in the nearshore environment where refuge is adequate. Large woody debris and gravel substrate are two types of refugia that are scarce in Lake Washington. Slowing shoreline erosion maintains this habitat.

The Luther Burbank Park South Shoreline is 800 feet of unarmored shoreline. It supports shoreline forest cover which shades the nearshore environment. This helps moderate water temperatures for outmigrating juvenile salmon. The bank above ordinary high water has become oversteepened from wave action. Sections of the bank periodically fail and large amounts of fine sediment enter the lake. The sediment buries refugia features. At the same time, shoreline canopy is lost. Trees are uprooted and end up in the lake. If allowed to progress at the current pace, the shoreline will become loaded with sediment and less shaded over time. The addition of spawning gravels and large woody debris will reduce the rate of erosion and conserve shoreline canopy cover. One 50' section of shoreline that has been excessively undercut will be regraded and stabilized with bioengineered willow stake plantings.

The project execution will include contracted public works for in-water work and a combination of natural resources crews, conservation corps and volunteer labor to complete the upland portion of the project. This approach generates public awareness of the project and provides a platform to connect with individuals and communities that are not well represented in the natural resources field. Outreach, recruitment, training and coordination of service learning opportunities will be provide by the City of Mercer Island and the Mountains to Sound Greenway Trust.

The trail along the south shoreline connects two of the most popular park destinations, the docks and the swim beach. It also provides connection to the shoreline and fishing dock. It will be accessible to wheelchair users when relocated. Interpretive elements along the trail will amplify the value of the shoreline habitat for park users.

Project Activities and Measurable Results®

List specific project activities to be completed with KCD grant funds and the associated outcomes or measurable results, and timeline.

Shoreline Restoration: Area of new spawning gravel bed; number of large woody debris features - July-Oct 2022

Trail Relocation: Linear feet of new ADA trail - June-Nov 2022 & 2023

Native Plantings: Area of new plantings, number of new plants - Fall 2022 and 2023

Service Learning: number of volunteers involved, number of career development positions involved, volunteer hours, education topics covered - April 2022-December 2023

Public Access and Education: number of water access points created; number of interpretive elements created - Fall 2023

Project Budget and Expenses

Fill out and upload separate Application Budget Form also available on the KCD Member Jurisdiction Grant Program website. Budget must be detailed with footnotes, appropriate and reasonable, *meeting state auditor/GAAP guidelines. Please do not use forms from previous applications. Please only upload the form linked above. Thank you!*

2019-KCD-Member-Jurisdiction-Grant-Program-Application-Budget-Mercer-Island-revised-20210226.xlsx

Member Jurisdiction Authorization Letter

If you are a nonprofit organization seeking Member Jurisdiction funding, you must upload written authorization from the Member Jurisdiction to apply for funding. This can be in the form of a letter or scanned copy of an email.

Additional Attachments

Upload any photos or maps of your project here. Only one file will be accepted. Please combine multiple files into one if possible.

LBSS_JARPA_12-29-2020.pdf

Natural Resource Improvement Actions- Criteria Checklist

Please **only** select "yes" below the action that your project **directly** addresses

Direct Improvement of Natural Resource Conditions*

To improve landscape and natural resource conditions as a result of direct action that enhances water quality, protects and conserves soils, implements ecosystem restoration and preservation projects *(examples include supporting private property owners with land stewardship, water quality, aquatic and wildlife habitat resources, removal of invasive weeds, stewardship on public land)*

Does your project directly address this issue?

Yes

Education and Outreach*

To raise awareness, deepen knowledge, and change behaviors of residents, landowners, and other land managers and organizations to practice exemplary stewardship of natural resources *(examples include education about stormwater management; the value of farmland, local farms and food systems, shorelines, salmon habitat, forests and other ecosystems)*

Does your project directly address this issue?

Yes

Pilot and Demonstration Projects*

To test and/or improve concepts and/or approaches in natural resource management that can be replicated by others *(examples include low impact development or green infrastructure demonstration projects, development of new best management practices, distribution of local farm products, urban agriculture (e.g. farmers markets and backyard food production to promote or support social economic independence and healthy living); technological innovation for natural resource conservation)*

Does your project directly address this issue?

Yes

Capacity Building*

To enhance the ability of organizations, agencies, residential landowners and other land owners and managers to have knowledge, skills, tools, support systems and technical resources to implement exemplary best management practices and deliver natural resource management actions on the ground (*examples include urban agriculture development, assistance to and inclusion of private property owners, preservation, restoration, and/or expansion of urban and/or rural agricultural lands, rural and urban forest lands, riparian restoration and stewardship on private and public lands*)

Does your project directly address this issue?

Yes

Project Type*

Shorelines, Urban

KCD Acknowledgement and Signature

By signing below, the applicant agrees to acknowledge King Conservation District funding by placing the KCD-provided logo on signs, materials, and documents produced as part of the above proposal. In addition, the applicant will notify KCD of public events and activities funded by the KCD.

*

I have read the above paragraph about acknowledging KCD and I will use the provided logo.

Authorized Applicant Electronic Signature*

Please enter your full name to sign and agree to the above.

Paul D. West

Title

CIP Project Manager

Date*

02/26/2021

File Attachment Summary

Applicant File Uploads

- 2019-KCD-Member-Jurisdiction-Grant-Program-Application-Budget-Mercer-Island-revised-20210226.xlsx
- LBSS_JARPA_12-29-2020.pdf



Member Jurisdiction Grant Program

Grant Application Project Budget Form

Promoting sustainable uses of natural resources
through responsible stewardship

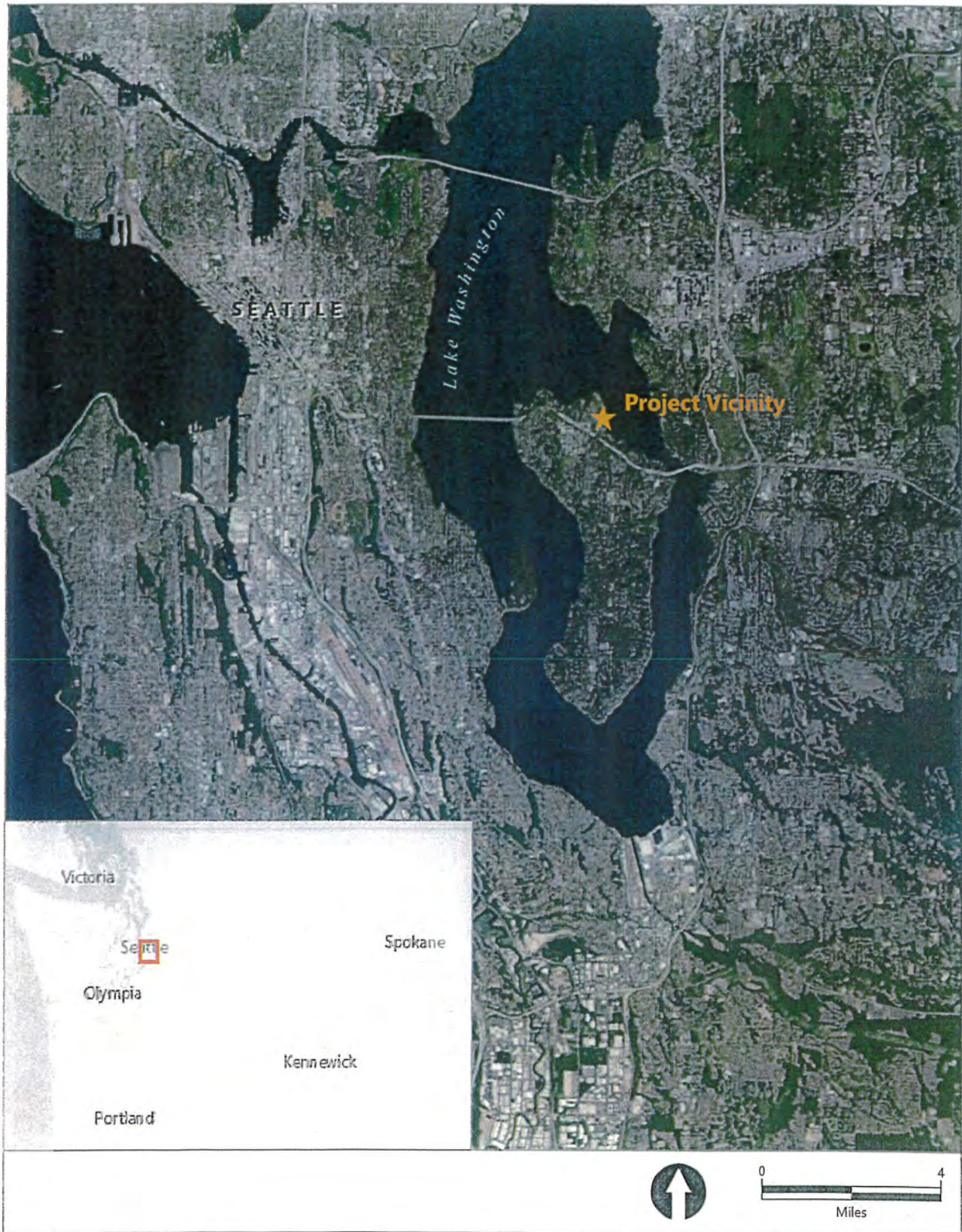
Project Name	Luther Burbank Park South Shoreline and Trail Restoration				
Applicant	City of Mercer Island				
Contact	Paul West				
Mailing Address	9611 SE 36th Street, Mercer Island, WA 98040				
E-mail	paul.west@mercercisland.gov			Project Start Date:	April 2022
Phone	206-459-5434			Project End Date:	December 2023

Please provide detailed budget information below. Itemize categories such as supplies, contracted services with footnotes and detailed descriptions below.

Budget Item	KCD Funds	Other Funds	Other Funds	Other Funds	Other Funds	Total
		City of Mercer Island	King County Waterworks	WRIA 8 Cooperative Watershed Mgmt	Washington Wildlife and Recreation Program Trails	
Project Management Salaries & Benefits	\$5,000	\$10,000	\$5,000	\$5,000	\$5,000	\$30,000
Public Works Contract w/const contingency (Aquatic wk)	\$50,000	\$88,000	\$52,000	\$52,000		\$242,000
Engineering and Permitting Prof Services w/design contingency	\$25,000	\$25,000	\$18,000	\$18,000	\$24,000	\$110,000
NR crew, Conservation Corps and Volunteers incl. materials, support services and mgmt	\$5,000	\$115,000			\$86,000	\$206,000
Permits	\$5,000	\$10,000				\$15,000
TOTAL	\$90,000	\$248,000	\$75,000	\$75,000	\$115,000	\$603,000

Total Project Cost	\$603,000
Total Match	\$513,000
Amount of KCD Funding Requested	\$90,000
Match Percentage	85%

Aquatic work is completed by public works contract; Terrestrial work is completed primarily by Natural Resources Crew/Conservation Corps and volunteers; NR Crew/Conservation Corps with support services perform at 60% of the cost of prevailing wage work; Volunteer work and support services perform at 40% of prevailing wage work; WRIA 8 and King County Waterworks fund aquatic work; Other source fund balance of project.



Publish Date: 2019/12/27, 9:49 AM | User: bbundy
 Filepath: \\fujil\Anchor\Projects\City of Mercer Island\Irrig Intake & Swim Area Maint\04 - Permitting\VARPA\Attachment 2 - CR Memo\Figure Native Files\CRA_Fig1_Vicinity.mxd

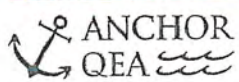
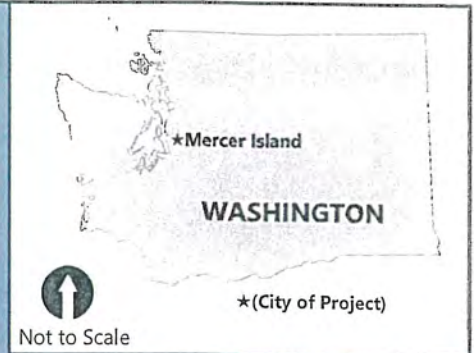


Figure 1
Project Vicinity
 Cultural Resources Assessment
 Luthur Burbank Park Irrigation Intact and Swim Area Maintenance Project

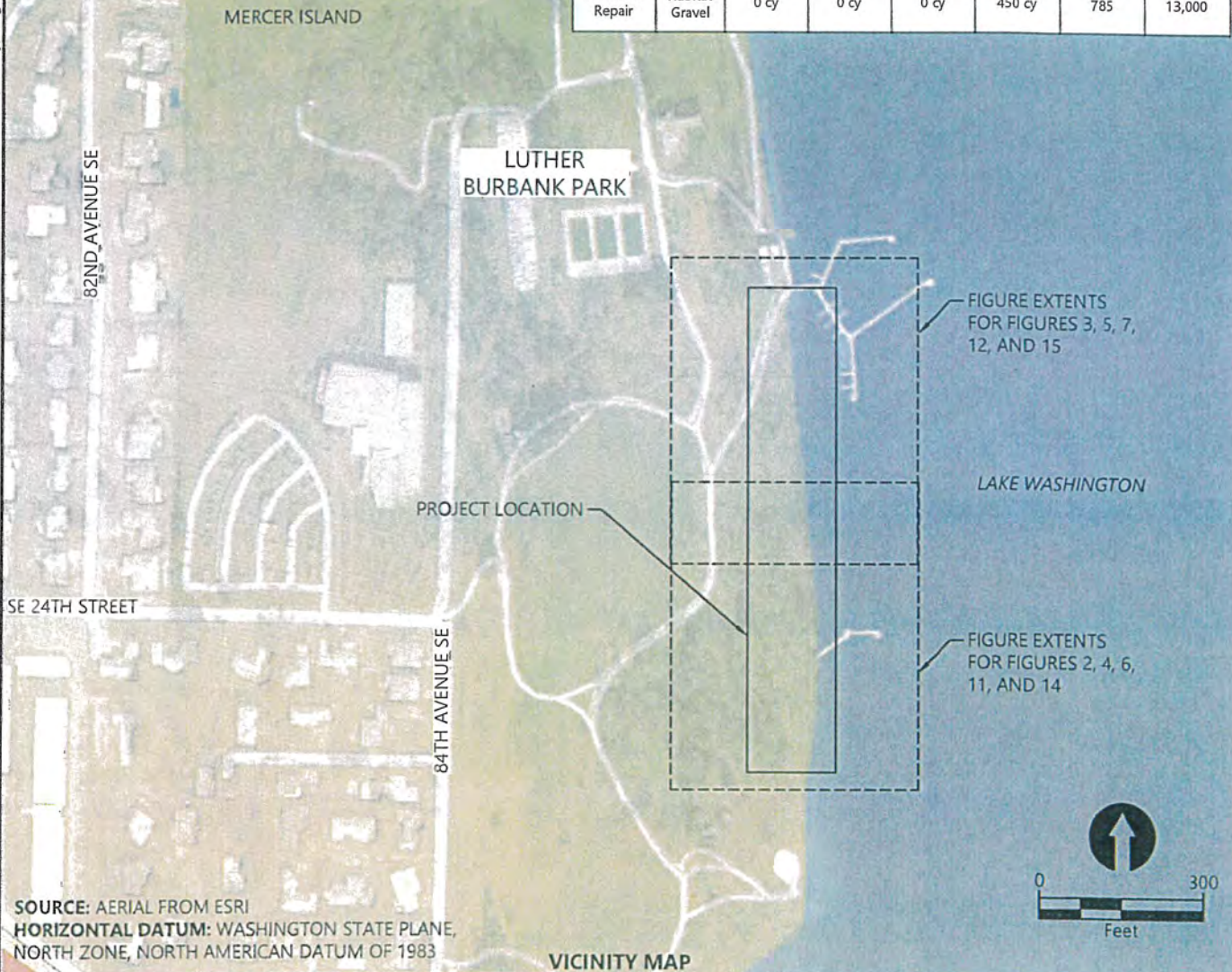
K:\Projects\1018-City of Mercer Island\Calkins Landing and Luther Burbank\03_South Shoreline\Permit\UARPA\1018-JP-001 (Vicinity).dwg Figure 1

Dec 23, 2020 11:37am chawett

TITLE	
SHEET NO.	Sheet Title
1	VICINITY MAP
2	EXISTING CONDITIONS (1 OF 2)
3	EXISTING CONDITIONS (2 OF 2)
4	DEMOLITION AND CLEARING PLAN (1 OF 2)
5	DEMOLITION AND CLEARING PLAN (2 OF 2)
6	GRADING PLAN (1 OF 2)
7	GRADING PLAN (2 OF 2)
8	GRADING SECTIONS (1 OF 3)
9	GRADING SECTIONS (2 OF 3)
10	GRADING SECTIONS (3 OF 3)
11	MATERIALS PLAN (1 OF 2)
12	MATERIALS PLAN (2 OF 2)
13	MATERIALS DETAILS
14	PLANTING PLAN (1 OF 2)
15	PLANTING PLAN (2 OF 2)
16	PLANT SCHEDULE



Earthwork Data							
Project Element	Fill Material Type	Cut Landward of OHWM	Cut Waterward of OHWM	Fill Landward of OHWM	Fill Waterward of OHWM	Linear Feet	Square Feet
Trail	Wood Chips, Top Soil, Gravel	375 cy	0 cy	200 cy	0 cy	800	13,000
Shoreline Repair	Habitat Gravel	0 cy	0 cy	0 cy	450 cy	785	13,000



REFERENCE #: N/A

APPLICANT: CITY OF MERCER ISLAND

LOCATION: 2040 84TH AVENUE SE
MERCER ISLAND, WA 98040

ADJACENT PROPERTY OWNERS:
1. CITY OF MERCER ISLAND

NAME: LUTHER BURBANK SOUTH SHORELINE AND TRAIL RESTORATION PROJECT

PROPOSED: SHORELINE RESTORATION AND REPAIR

PURPOSE: UPDATE TRAIL, ADD SHORELINE RESTORATION ELEMENTS

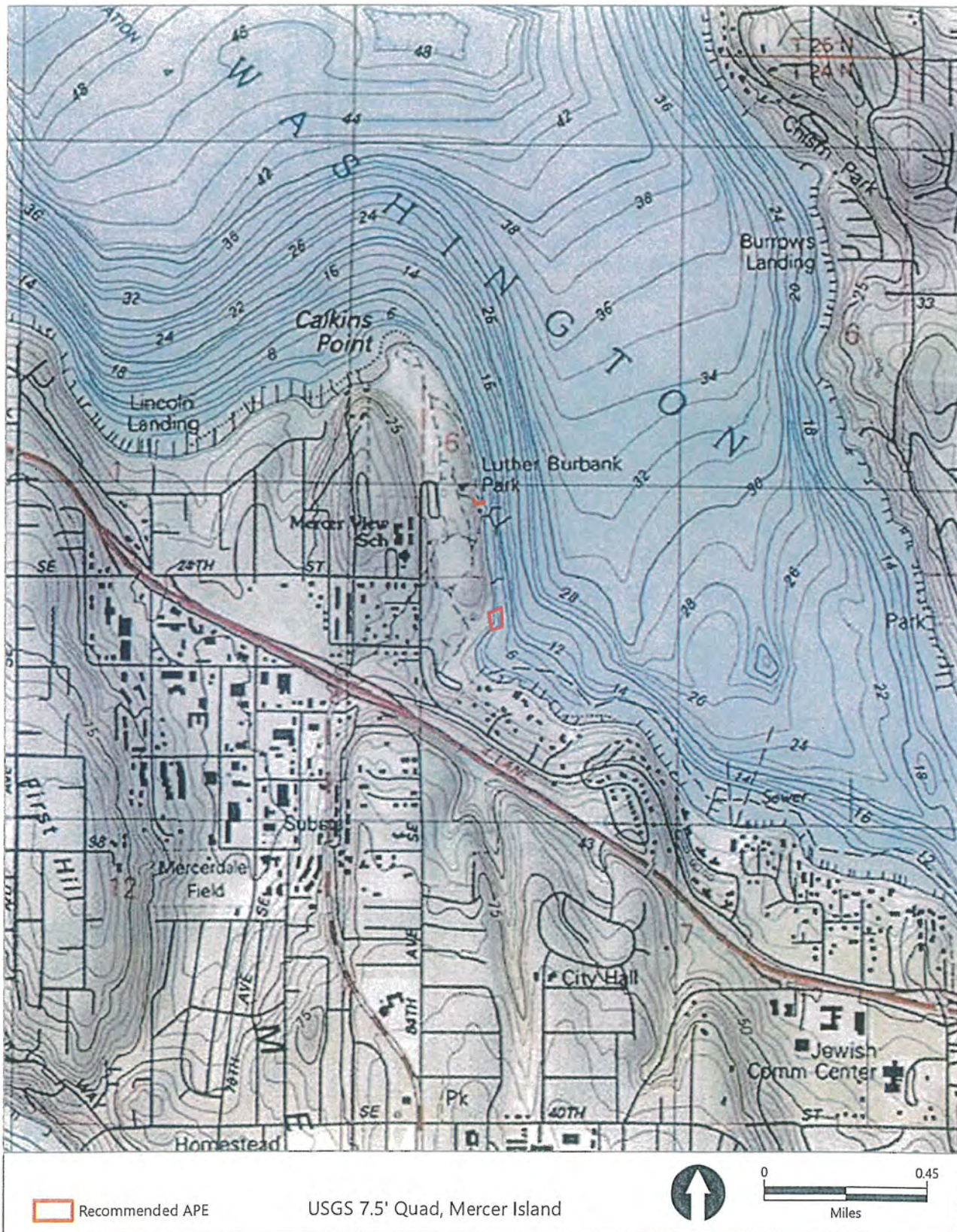
DATUM: NAVD 88
LATITUDE: 47.591034 N
LONGITUDE: -122.224481 W
S-T-R: 6-25N-5E

IN: LAKE WASHINGTON
NEAR/AT: MERCER ISLAND
COUNTY: KING
STATE: WASHINGTON

DATE: DECEMBER 2020

ANCHOR QEA
1201 3rd Ave, Suite 2600
Seattle, WA 98101
206-287-9130

PAGE: 1 OF 16



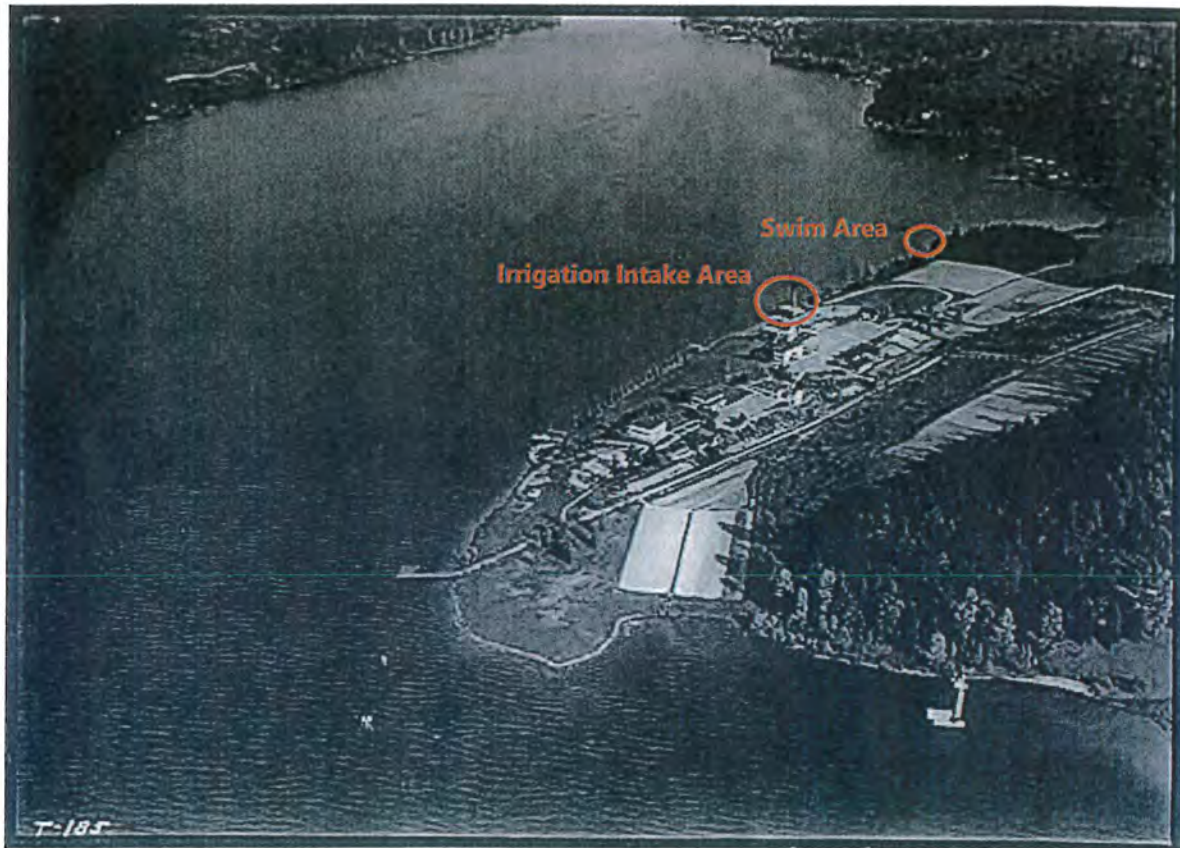
Publish Date: 2019/12/27, 10:18 AM | User: bbandy
 Filepath: \\fujii\Anchor\Projects\City of Mercer Island\Irrig Intake & Swim Area Maint\04 - Permitting\VARPA\Attachment 2 - CR Memo\Figure Native Files\CRA_Fig3_APE.mxd



Figure 4
Recommended Area of Potential Effects
 Cultural Resources Assessment
 Luther Burbank Park Irrigation Intact and Swim Area Maintenance Project

constructed as a public restroom serving the dock. In 1998, an arson fire occurred in the boiler room building, damaging the interior (Boyle Wagoner Architects 1998). In 2002, ownership of the Park was transferred to the City of Mercer Island.

Photograph 1
Luther Burbank School in 1933



Source: Museum of History and Industry

Previous Research

There are no recorded archaeological sites within a mile of the Project area. The nearest recorded sites are a historic debris scatter in Bellevue (45K11008), approximately 1.4 miles east of the Project area, and submerged World War II aircraft in Lake Washington approximately 2 miles northwest of the Project area. No cultural resources surveys have been conducted in the Project area, though it appears that SHPO evaluated the potentially historic structures in the Park in 2018 and determined them to be not NRHP-eligible. The nearest cultural resources survey occurred at Calkins Point in the Park, approximately 1,500 feet north of the Project area (Bundy 2015). Two other surveys were conducted along the shoreline west of Calkins Point, approximately 1,800 to 2,100 feet northwest of

**King Conservation District Board of Supervisors Meeting
Agenda Action Briefing/Report
Meeting Date: April 12th, 2021**

SUBJECT: AI 21-030

- Motion to approve the Member Jurisdiction grant application from Anchor QEA for the Seahurst Park Phase 2 Post Construction Eelgrass Survey 2021 project

FISCAL IMPACT

- The applicant is requesting \$40,266 from KCD-Burien Member Jurisdiction funds

POLICY CONSIDERATION

- The proposal meets the following natural resource improvement actions which are criteria for funding from the grant program
 - Education and Outreach
 - Direct Improvement of Natural Resources
 - Capacity Building
 - Pilot and Demonstration

STAKEHOLDER INTERESTS

- See grant application attached.

BACKGROUND

- The grant subcommittee reviewed this application at their March 22nd, meeting and did not have any concerns about this proposal.

EFFECTIVE DATE:

- If approved, this Motion becomes effective on the date of approval.

OPTIONS

- Vote in favor or not in favor of approving the consent agenda.
- Request that this item be removed from the consent agenda for discussion.

RECOMMENDATION

- The grant subcommittee recommends approval of this grant application.

MOTION

- Motion to approve the Member Jurisdiction grant application for \$40,266 from KCD-Burien Member Jurisdiction 2012, 2014, 2015, 2019, 2020 funds for the Anchor QEA Seahurst Park Phase 2 Post Construction Eelgrass Survey 2021 project

Seahurst Park Phase II Post-Construction Eelgrass Survey

Member Jurisdiction Grant Program

Anchor QEA

Elizabeth Greene
1201 Third Avenue
Suite 2600
Seattle, WA 98101, WA 98101

O: 206-287-9130

Elizabeth Greene

1201 3rd Ave
Suite 2600
Seattle, WA 98101

egreene@anchorqea.com
O: 707-633-6094

Application Form

Summary Information

Project Title*

Seahurst Park Phase II Post-Construction Eelgrass Survey

Project Description - Short*

Provide a short, concise description of the project no more than two or three sentences.

The project entails conducting a post-construction eelgrass survey at Seahurst Park to meet regulatory requirements of the City of Burien's 401 Water Quality Certification and to understand how the restoration project has affected eelgrass habitat.

Principal Partners (if any)

City of Burien

Amount of KCD Funding Requested*

You will need to upload a detailed budget document before you submit your application. Please make sure the amount requested and total project cost amounts you list here match the amounts in the uploaded budget document.

\$40,266.00

Total Project Cost*

\$40,266.00

Total Matching Funds (optional)

\$0.00

Project Start Date*

03/15/2021

Project End Date*

11/30/2021

Close Date

Project Location*

Address, Parcel #, OR L&L Points, for site specific projects only.

If more than two locations, state "multiple" and explain.

Project would occur along the north shoreline of Seahurst Park, Phase II Ecosystem Restoration Project in Burien, WA. Seahurst Park is located at 1600 SW Seahurst Park Rd, Burien, WA 98166.

Jurisdiction

If the applicant is not a city or jurisdiction, please type in the city or jurisdiction this project is located in.

Burien

Is your project on public or private land?*

Public

State Legislative District #*

Click here to find it on the web. If your project resides in more than one district, type in the primary district or type in zero.

34

King County District #*

Click here to find it on the web. If your project resides in more than one district, type in the primary district or type in zero.

8

Narratives, Budget, & Attachments

Project Description - Detailed*

Provide a description of the project that summarizes what you will do, how you will do it, and why you will do it. Describe target audience, outcomes, objectives and general timelines.

The project entails conducting a post-construction eelgrass (*Zostera* spp.) survey along the north shoreline of the Seahurst Park Phase II Ecosystem Restoration Project (Phase II Project) in Burien, Washington. In 2014, the Seattle District of the U.S. Army Corps of Engineers (USACE) completed construction of the Phase II Project along this section of shoreline. The Phase II Project entailed removal of up to

approximately 2,500 linear feet of concrete seawall and rock shoreline armoring material and 15,000 cubic yards (cy) of fill material behind the seawall. The Phase II Project also included placement of approximately 25,000 cy of salvaged and imported beach material between elevations +1.0 feet and +16 feet mean lower low water (MLLW). The Phase II Project area extended along approximately 3,000 linear feet of shoreline along the north end of the park.

In 2012, Anchor QEA implemented the USACE- and Washington Department of Fish and Wildlife (WDFW)-approved pre-construction monitoring plan developed for the Phase II Project. The pre-construction monitoring plan included the methods to conduct an eelgrass survey in the Phase II Project area prior to construction of the restoration project. The pre-construction eelgrass survey results were included in the Eelgrass, Beach Profile, and Substrate Characterization Pre-Construction Monitoring Report for the Seahurst Park Phase II Ecosystem Restoration Project. The intent of the pre-construction eelgrass survey was to establish the baseline conditions and the survey locations and methods to be implemented, if necessary, in a post-construction survey. In 2018, Anchor QEA implemented a post-construction eelgrass survey to assess eelgrass distribution and density at the site, which met the following objectives:

- Document the full distribution and boundaries of eelgrass within the survey area.
- Document turion (shoot) density of eelgrass beds.
- Describe other macroalgae and macrofauna observed.
- Compare distribution and density of eelgrass beds to the pre-construction survey to assess potential project impact.

The 2018 eelgrass survey documented that the Phase II Project's goal to achieve no net loss in eelgrass distribution and density was met. Therefore, the 2021 post-construction eelgrass survey will follow the survey methods described in the 2018 Post-Construction Eelgrass Monitoring Plan.

The survey is planned for June 2021 with reporting completed within 60 days of the survey. Conducting the eelgrass survey meets the regulatory requirements of the City of Burien's 401 Water Quality Certification for the project and informs whether the project continues to provide improvements to eelgrass habitat in the area of the project.

Project Activities and Measurable Results*

List specific project activities to be completed with KCD grant funds and the associated outcomes or measurable results, and timeline.

The first task in the project is to prepare a study plan and coordinate with WDFW.

The 2018 Eelgrass Monitoring Plan (Study Plan) will be updated for 2021. The 2021 Study Plan will be provided to WDFW for review and approval. Eelgrass monitoring protocols require WDFW's review of a study plan to ensure consistency with their guidelines. WDFW protocols work well for small sites, such as a single dock area, but for an expansive project area like Seahurst Park, there are opportunities for sampling efficiencies to reduce the number of field days. The field survey is based on justifiable variations to the WDFW protocols that were accepted by WDFW in 2018, so we do not expect any issues with the protocol. This task includes the update of the Study Plan for WDFW review, as well as time for coordination with WDFW. The study plan will include a Health and Safety Plan to describe safety procedures that will be implemented during the work.

The second task is to conduct the survey. This task entails preparing the boat, dive gear, and video gear for the eelgrass survey and conducting the survey. The eelgrass survey includes an underwater video survey, a land-based survey, and a dive survey.

Underwater Video Survey:

The underwater video survey is expected to take 1 day and will consist of recording video using a Sea-All camera suspended from the bow of the survey boat. Video will be recorded along a track traveled by the boat in the survey and reference areas. The video effort will be conducted with a crew of three: a boat captain, a towed camera tender, and a note taker/boat-based equipment manager. In the 1-day effort, GPS-integrated

video data will be collected to characterize and map the outline of the eelgrass bed in the project area and the reference area.

Land-Based Survey:

Anchor QEA biologists will walk the intertidal portion of the survey area from approximately -2.0 to +7.0 feet MLLW and delineate intertidal eelgrass patches using a differential global positioning system (DGPS) with submeter accuracy. Additional observations will be noted, including dominant substrate and other flora and fauna in the survey area. The land-based survey is expected to take 1 day and will be conducted by a two-person crew during a low-tide period.

Dive Survey:

Observations will be conducted by a team of two scuba divers within the delineated eelgrass beds in the survey and reference areas, as identified in the video survey. Transects surveyed during the pre-construction eelgrass survey will be reoccupied by setting out a 200-foot tape measure perpendicular to the shore within the delineated eelgrass beds. The diver observations will include turion counts of eelgrass at randomly generated points along transects. Turion density will be calculated by placing a 0.25-meter-square PVC quadrat on the surface of the eelgrass bed and counting the turions within the quadrat. This information will be conveyed from the divers to the biologist via radio and recorded in a spreadsheet. The dive survey is expected to take 2 days, with a crew consisting of a boat captain, two divers, and one boat tender.

The third task is data analysis and reporting. Data analysis will consist of converting the underwater video survey and land-based survey results into a map showing the extent and presence or absence (i.e., continuous, patchy, or absent) of eelgrass and calculating turion density and variance in the project and reference areas. A report will be prepared that describes and summarizes the survey approach, methods, results, and discussion. The results and discussion sections will include a comparison of results to the pre-construction survey, noting any changes potentially resulting from Phase II Project construction, as well as a summary of other macroflora and macrofauna encountered during the eelgrass survey.

Per WDFW guidelines, the post-construction eelgrass survey is required to be completed between June 1 and October 1 unless approved by WDFW. Anchor QEA proposes to complete the survey in June 2021 to avoid blooms of *Ulva* spp. in the project area. The post-construction eelgrass monitoring report will be prepared within 60 days after completion of all field work.

Project Budget and Expenses*

Fill out and upload separate Application Budget Form also available on the KCD Member Jurisdiction Grant Program website. Budget must be detailed with footnotes, appropriate and reasonable, *meeting state auditor/GAAP guidelines*. Please do not use forms from previous applications. Please only upload the form linked above. Thank you!

2019-KCD-Member-Jurisdiction-Grant-Program-Application-Budget-Form.xlsx

Member Jurisdiction Authorization Letter

If you are a nonprofit organization seeking Member Jurisdiction funding, you must upload written authorization from the Member Jurisdiction to apply for funding. This can be in the form of a letter or scanned copy of an email.

Additional Attachments

Upload any photos or maps of your project here. Only one file will be accepted. Please combine multiple files into one if possible.

Natural Resource Improvement Actions- Criteria Checklist

Please **only** select "yes" below the action that your project **directly** addresses.

Direct Improvement of Natural Resource Conditions*

To improve landscape and natural resource conditions as a result of direct action that enhances water quality, protects and conserves soils, implements ecosystem restoration and preservation projects (*examples include supporting private property owners with land stewardship, water quality, aquatic and wildlife habitat resources, removal of invasive weeds, stewardship on public land*)

Does your project directly address this issue?

Yes

Education and Outreach*

To raise awareness, deepen knowledge, and change behaviors of residents, landowners, and other land managers and organizations to practice exemplary stewardship of natural resources (*examples include education about stormwater management; the value of farmland, local farms and food systems, shorelines, salmon habitat, forests and other ecosystems*)

Does your project directly address this issue?

Yes

Pilot and Demonstration Projects*

To test and/or improve concepts and/or approaches in natural resource management that can be replicated by others (*examples include low impact development or green infrastructure demonstration projects, development of new best management practices, distribution of local farm products, urban agriculture (e.g. farmers markets and backyard food production to promote or support social economic independence and healthy living); technological innovation for natural resource conservation*)

Does your project directly address this issue?

Yes

Capacity Building*

To enhance the ability of organizations, agencies, residential landowners and other land owners and managers to have knowledge, skills, tools, support systems and technical resources to implement exemplary best management practices and deliver natural resource management actions on the ground (*examples include urban agriculture development, assistance to and inclusion of private property owners, preservation, restoration, and/or expansion of urban and/or rural agricultural lands, rural and urban forest lands, riparian restoration and stewardship on private and public lands*)

Does your project directly address this issue?

Yes

Project Type*

Shorelines, Urban

KCD Acknowledgement and Signature

By signing below, the applicant agrees to acknowledge King Conservation District funding by placing the KCD-provided logo on signs, materials, and documents produced as part of the above proposal. In addition, the applicant will notify KCD of public events and activities funded by the KCD.

I have read the above paragraph about acknowledging KCD and I will use the provided logo.

Authorized Applicant Electronic Signature*

Please enter your full name to sign and agree to the above.

Elizabeth Greene

Title

Managing Scientist

Date*

03/15/2021

File Attachment Summary

Applicant File Uploads

- 2019-KCD-Member-Jurisdiction-Grant-Program-Application-Budget-Form.xlsx



Member Jurisdiction Grant Program

Grant Application Project Budget Form

*Promoting sustainable uses of natural resources
through responsible stewardship*

Project Name	Seahurst Park Phase II Post-Construction Eelgrass Survey		
Applicant	Anchor QEA		
Contact	Elizabeth Greene		
Mailing Address	1201 Third Avenue Suite 2600 Seattle, WA, 98101		
E-mail	egreene@anchoragea.com	Project Start Date:	15-Mar-21
Phone	707-633-6094	Project End Date:	30-Nov-21

Please provide detailed budget information below. Itemize categories such as supplies, contracted services with footnotes and detailed descriptions below

Budget Item	KCD Funds	Other Funds	Other Funds	Total
		<i>(identify source and status of matching funds here ex. Rose Foundation - Pending)</i>	<i>(identify source and status of matching funds here ex. DON Small and Simple - Secured)</i>	
Salaries & Benefits	\$23,869			\$23,869
Travel/ Meals/ Mileage (for - volunteers, staff)	\$16			\$16
				\$0
				\$0
				\$0
Office Supplies	\$70			\$70
				\$0
				\$0
Field Supplies				\$0
Contracted/ Professional Services	\$16,311			\$16,311
Permits				\$0
Other: <i>(specify)</i>				\$0
Other: <i>(specify)</i>				\$0
Other: <i>(specify)</i>				\$0
Other: <i>(specify)</i>				\$0
Other: <i>(specify)</i>				\$0
TOTAL	\$40,266	\$0	\$0	\$40,266

Total Project Cost	\$40,266
Total Match	\$0
Amount of KCD Funding Requested	\$40,266
Match Percentage	0%



City of Burien
400 SW 152nd Street
Suite 300
Burien, WA 98166-1911

P 206.241.4647
F 206.248.5539

burienwa.gov

March 17, 2021

Jessica Saavedra
King Conservation District
800 SW 39th St Suite #150
Renton, WA 98057

RE: Letter of Support for use of KCD-Burien Member Jurisdiction Funds

Dear Jessica:

The City of Burien would like to confirm support for Anchor QEA's application for \$40,266 of local jurisdiction funds allocated to Burien. The City would like to continue working with Anchor Environmental on the fifth eel grass survey related to the restoration of Seahurst Park beach. This work will help the City and Army Corps of Engineers complete the necessary monitoring of eel grass, which is required as part of the Washington Department of Ecology 401 Water Quality Permit to implement the seawall removal and habitat enhancement project. The final report will be made available to KCD, the Army Corps of Engineers, Washington Department of Ecology and other agencies, and the public.

The City looks forward to completing this work with Anchor QEA and finalizing the formal monitoring requirements for the Seahurst Park Phase II restoration project.

Please let me know if you have any questions or concerns. I can be reached at carolynh@burienwa.gov or (206) 248-5513.

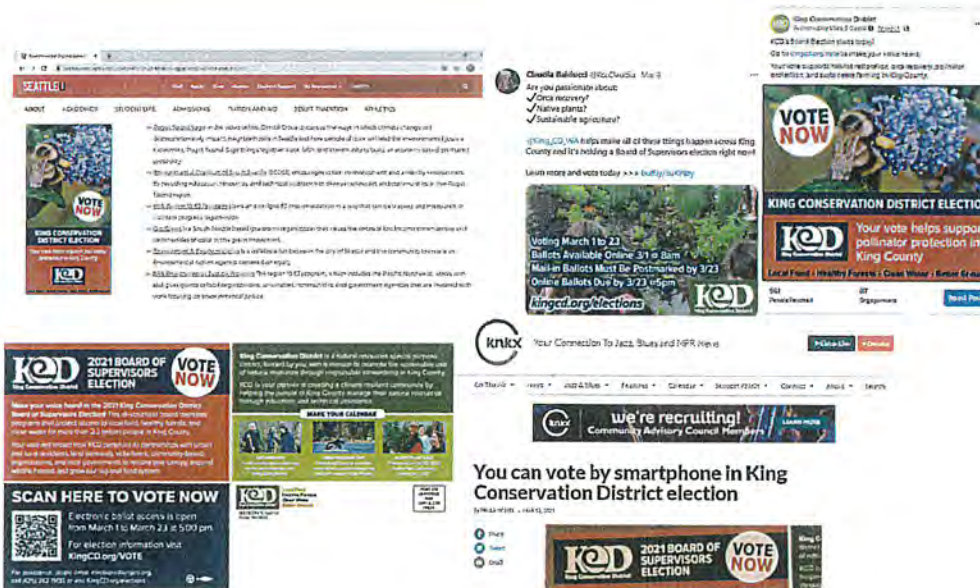
Sincerely,

Carolyn Hope
Parks, Recreation, and Cultural Services Director

UNFINISHED BUSINESS

2021 Election Numbers Overview

- Direct Mailers
 - 845,307 postcards sent to households with eligible voters
 - 3,000 unique QR code scans
- Digital Ads Campaign
 - Ran for 3 weeks
 - 3,207,972 impressions
 - .27% click through rate or roughly 9,000 click throughs
- Earned Media
 - ~10 earned spots in traditional media
- Omniballot Landing Page
 - 22,800 unique visitors
- KCD Elections Page
 - 10,000 unique visitors
- Results
 - 9,509 ballots returned
 - 51% increase in voter participation from 2020
 - 3% ballots returned by mail
 - 97% ballots returned via omniballot



King County Canvassing Board
Election Summary Report
March 23rd, 2021
King Conservation District Election

Election Summary

Active Registered Voters	1,338,933	As of March 23, 2021
Issued	1,338,933	All issued ballots, including re-issues
Total Ballots Returned	9,552	All returned ballots, including mail, provisional, and protected records
Ballots returned via USPS	321	Ballots returned using USPS
Ballots returned via Drop Box	0	Ballots returned using a drop box
Ballots returned via Email / Fax	9,231	Ballots returned by military and overseas voters using email or fax
Verified	9,509	Signature is verified and ballot is on time
Opened	9,509	Verified ballots minus empty envelopes and Canvass Board rejects
Tabulated	9,509	All ballots cast

Statistical Percentages

Percentage of Ballots Returned where Ballot was Tabulated	99.55%	Tabulated / Returned
Percentage of Ballots Received Too Late	0.00%	Returned too late / Returned
Percentage of Ballots Received As Undeliverable	0.00%	Ballots Returned As Undeliverable / Total Mail Ballots Returned

Election Details

Line Item	Description	Sub Totals	Totals	Comment
Ballots Issued (Total Mail + Total Provisional)			1,338,933	
1	Total Number of Mail Ballots Issued		1,338,933	Sum of line 1.1 and 1.2
1.1	Number of mail ballots issued through VoteWA system	1,338,933		Reported from VoteWA. Includes reissues. All ballots excluding provisionals
1.2	Number of mail ballots issued outside of VoteWA system	0		Confidential ballots
2	Total Number of Provisional Ballots Issued		0	Sum of lines 2.1 and 2.2
2.1	Number of Provisional ballots issued by King County	0		Includes OBMP ballots.
2.2	Number of Provisional ballots issued by other counties	0		

King County Canvassing Board
Election Summary Report
March 23rd, 2021
King Conservation District Election

Line Item	Description	Sub-Totals	Totals	Comments
Ballots Returned (Total Mail + Total Provisional)			9,552	
3	Total Number of Mail Ballot Envelopes Returned		9,552	Sum of line 3.1 and 3.2
3.1	Number of mail ballot envelopes returned and reported in VoteWA	9,552		All mail ballots excluding undeliverables and confidentials
3.2	Number of mail ballots envelopes returned and not reported in VoteWA	0		Manually tracked (includes confidential, Federal Write-ins, and ballots with no voter info)
4	Total Number of Provisional Ballots Returned		0	Reported from VoteWA
5	Total Number of Ballots Returned As Undeliverable		0	Not included in returns counts. For information purposes only.
Ballots Verified (Total Mail + Total Provisional)			9,509	
Ballots Challenged and Cancelled (Total Mail + Total Provisional)			43	
6	Total Number Mail Ballot Envelopes Verified and Accepted		9,509	Sum of line 6.1 and 6.2.
6.1	Number of Mail Ballots Verified and Accepted in VoteWA	9,509		Reported from VoteWA
6.2	Number of Mail Ballots Verified and Accepted but not in VoteWA	0		Manually tracked (includes Confidential/Federal Write-ins)
7	Total Number of Mail Ballot Envelopes Challenged	43		Total of VoteWA challenges and non VoteWA system rejects
7.1	Deceased - administrative	0		Ballots accounted for in VoteWA.
7.2	ID Required - administrative	0		" "
7.3	Marked Moved - administrative	0		" "
7.4	Miscellaneous Rejects - administrative	0		" "
7.5	No Signature on File - administrative	0		" "
7.6	Non-VoteWA System Rejects - administrative	0		Includes confidentials
7.7	Other than voter - administrative	0		Ballots accounted for in VoteWA.
7.8	Power of Attorney - signature	0		" "
7.9	Signature Does Not Match - signature	35		" "

King County Canvassing Board
Election Summary Report
March 23rd, 2021
King Conservation District Election

Line Item	Description	Sub-totals	Totals	Comment
7.10	Too Late	0		" "
7.11	Unsigned - signature	8		" "
7.12	Voter Name Change - signature	0		" "
7.13	Witness Signature Missing - signature	0		" "
8	Total Number of Provisional Ballots Verified and Accepted		0	
9	Total Number of Provisional Ballots Challenged	0		

Ballots Opened and Sent to Tabulation (Total Mail - Total Provisional)		9,509	
10	Total Mail Ballots Opened and Sent to Tabulation	9,509	Line 6 (VoteWA) minus (Lines 10.1 + 10.2 + 10.3)
10.1	Mail Ballot Empty Envelopes	0	Tracked in Opening
10.2	Alt Format Empty Envelopes	0	Tracked in Ballot Review
10.3	Ballots Rejected (credit not removed in VoteWA)	0	Accounted for in Canvassing Board Records. Tracked in Ballot Review
11	Total Provisional Ballots Opened and Sent to Tabulation	0	Line 8 (VoteWA) minus (Lines 11.1 + 11.2)
11.1	Provisional Ballot Empty Envelopes	0	Tracked in Ballot Review
11.2	Provisional Ballots Rejected by Canvassing Board (credit not removed in VoteWA)	0	Accounted for in Canvassing Board Records. Tracked in Ballot Review

King County Canvassing Board
Election Summary Report
March 23rd, 2021
King Conservation District Election

Line Item	Description	Sub-Totals	Totals	Comment
Ballots Tabulated (Total Mail + Total Provisional)			9,509	
12	Total Number of Ballots Tabulated		9,509	Reported From Clear Count
12.1	Mail Ballots Tabulated	9,509		
12.2	Provisional Ballots Tabulated	0		

Key

Confidential: Address Confidentiality Program

Challenged: Ballots that are not processed due to a variety of voter related issues / actions

VoteWA: King County's election management / voter registration database

Clear Count: King County's vote tabulation system

OBMP: Online Ballot Marking Program

2021 Native Plant Sale Metrics

~65,000 Native Plants Distributed

Visits 📊

10293

↓ 15.49% from 12179

Conversion rate 📊

8.68%

↑ 24.53% from 6.97%

Orders 📊

894

↑ 1.82% from 878

Revenue 📊

\$125,216.83

↓ 3.16% from \$129,297.53

AOV 📊

\$140.06

↓ 4.89% from \$147.26

Revenue

