

# TREE CANOPY ASSESSMENT



TOTAL STUDY AREA

835 ACRES



TREE CANOPY

176 ACRES (21%)

ALGONA PACIFIC LIBRARY



PLANTABLE SPACE

284 ACRES (34%)

Algona's urban forest is a valuable asset that provides residents and visitors with many ecological, environmental, and community benefits. This assessment analyzed the City's urban tree canopy (UTC) and possible planting area (PPA) within four geographic boundaries. The results provide baseline data to develop strategies to protect and expand Algona's trees and natural areas during planning and development. The maps and project report help to concentrate efforts in areas where needs are greatest, tree planting space is available, and benefits can be realized.

## LAND COVER

21%

TREE CANOPY

34%

NON-CANOPY VEGETATION

38%

IMPERVIOUS

7%

SOIL & DRY VEGETATION

<1%

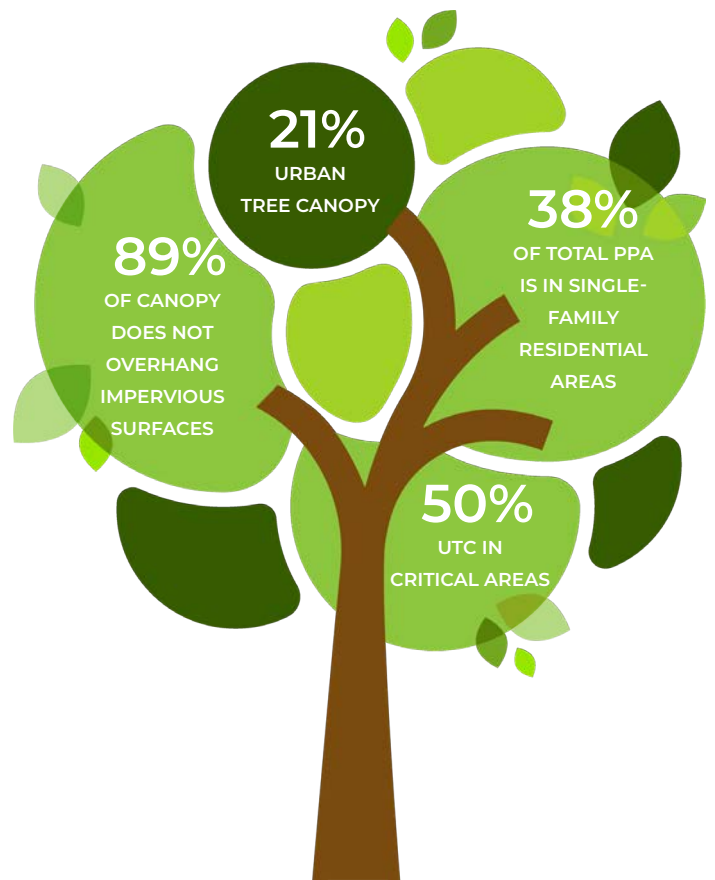
WATER



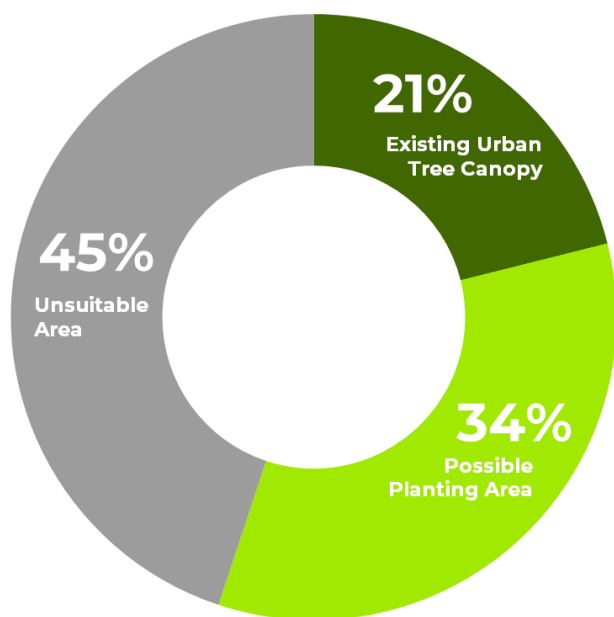
Note: Land cover percentages are based on total area. Urban tree canopy percentages are based on land area only.

Tree canopy data were analyzed for Algona's land use categories to determine the distribution of existing and potential urban tree canopy throughout the city. Sensitive/ Critical Areas had the highest canopy coverage at 50% and contained 38% of all canopy in the City, but Single-Family Residential areas had the highest percentage of PPA at 45% and contained 38% of the City's total plantable space.

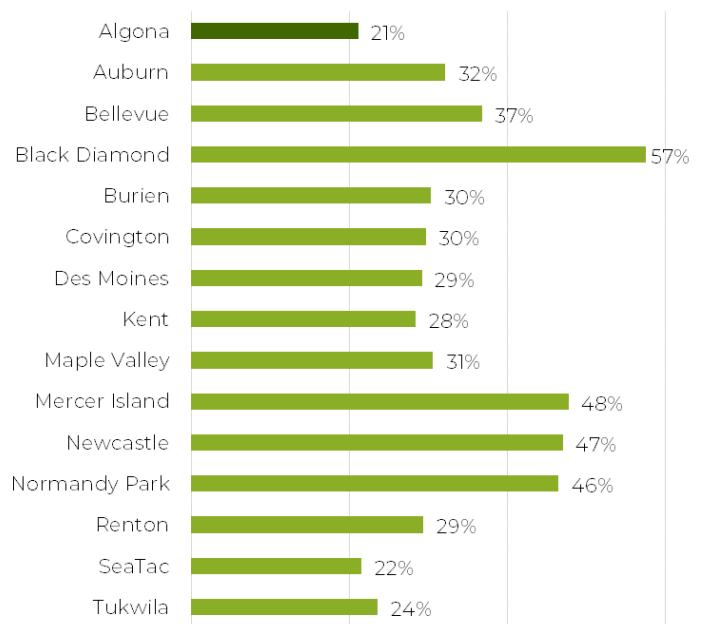
Land Use	Urban Tree Canopy		
	Acres	%	Dist.
General Commercial	17	32%	10%
Mixed Use Commercial/ Office	7	12%	4%
Industrial/Manufacturing	24	15%	14%
Single-Family Residential	40	17%	23%
Public Use/Institutional	0	3%	0%
Park/Golf Course/Trail/ Open Space	0	0%	0%
Sensitive/ Critical Area	66	50%	38%
Undesignated	21	12%	12%
<b>Totals</b>	<b>176</b>	<b>21%</b>	<b>100%</b>



### URBAN TREE CANOPY POTENTIAL IN ALGONA, WASHINGTON



### COMPARING URBAN TREE CANOPY IN KING COUNTY COMMUNITIES



\*Possible Planting Areas (PPA) were defined as vegetated areas without tree canopy and impervious surfaces such as parking lots and sidewalks. These areas may not be suitable for planting to increase canopy due to slope, views, soils, or other limitations. Field surveys to identify suitable planting areas are advised.

