

TREE CANOPY ASSESSMENT



TOTAL STUDY AREA

4,606 ACRES



TREE CANOPY

2,442 ACRES (57%)



PLANTABLE SPACE

866 ACRES (20%)



Black Diamond's urban forest is a valuable asset that provides residents and visitors with many ecological, environmental, and community benefits. This assessment analyzed the City's urban tree canopy (UTC) and possible planting area (PPA) within five geographic boundaries. The results provide baseline data to develop strategies to protect and expand Black Diamond's trees and natural areas during planning and development. The maps and project report help to concentrate efforts in areas where needs are greatest, tree planting space is available, and benefits can be realized.

LAND COVER

53%

TREE CANOPY

19%

NON-CANOPY VEGETATION

15%

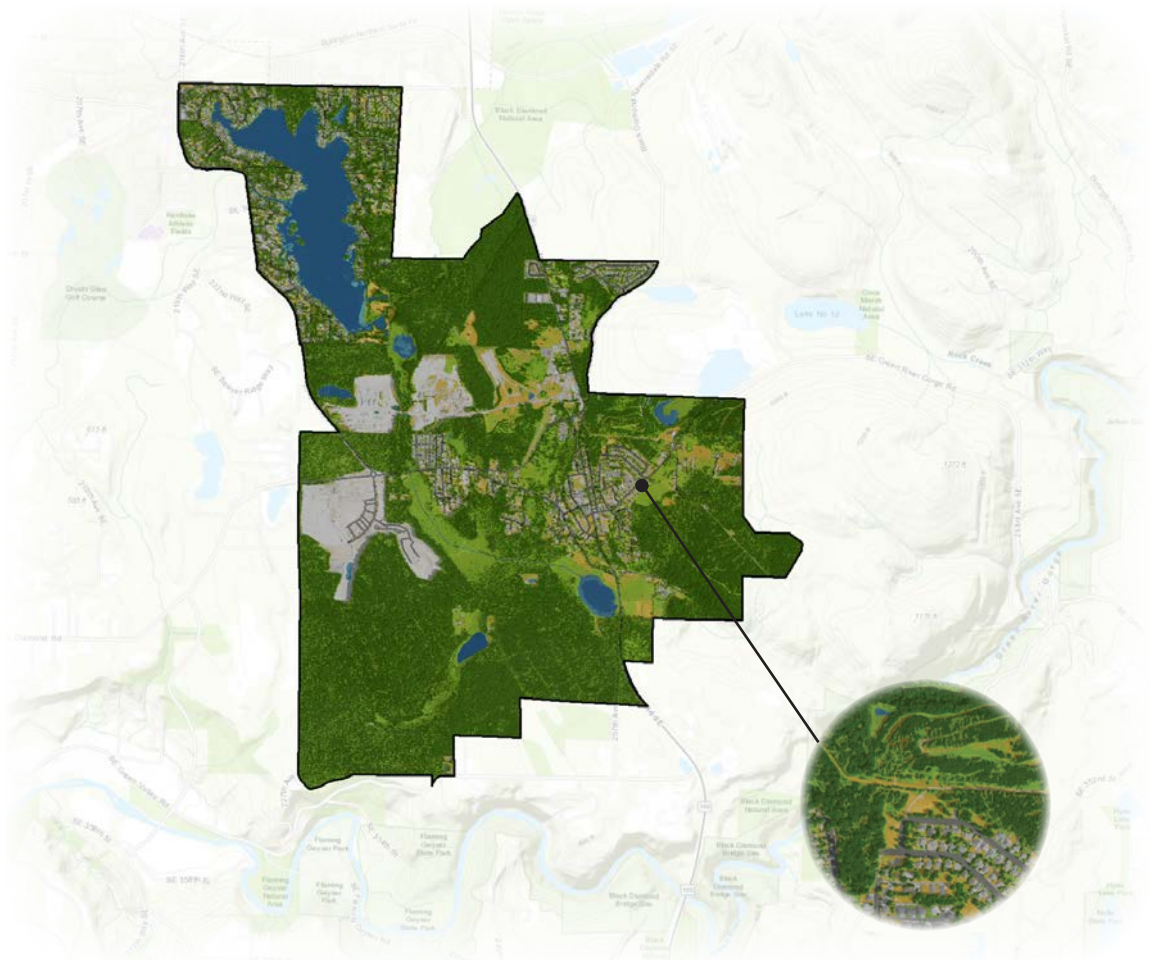
IMPERVIOUS

5%

SOIL & DRY VEGETATION

8%

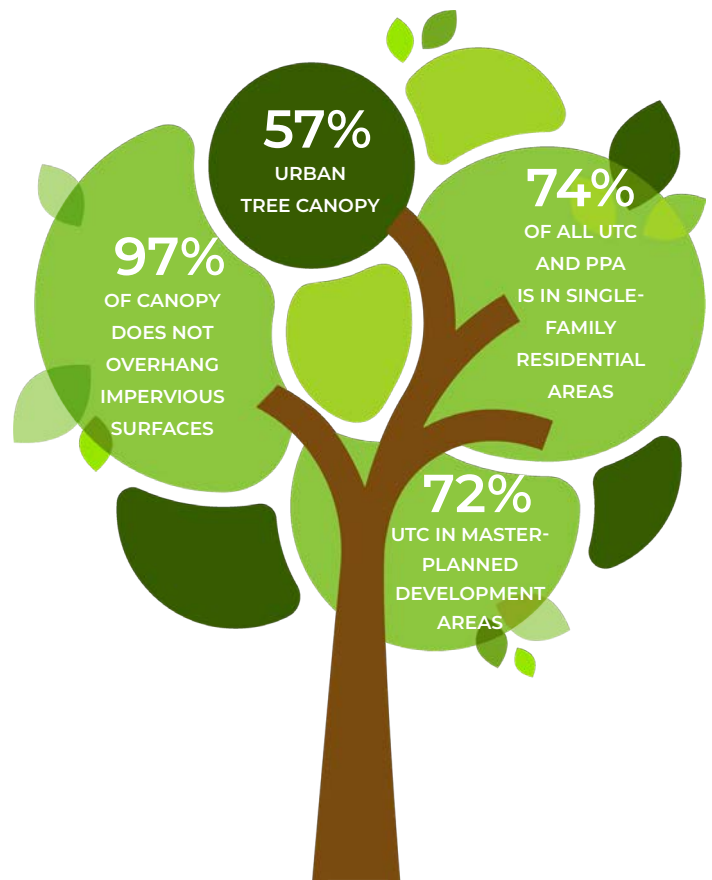
WATER



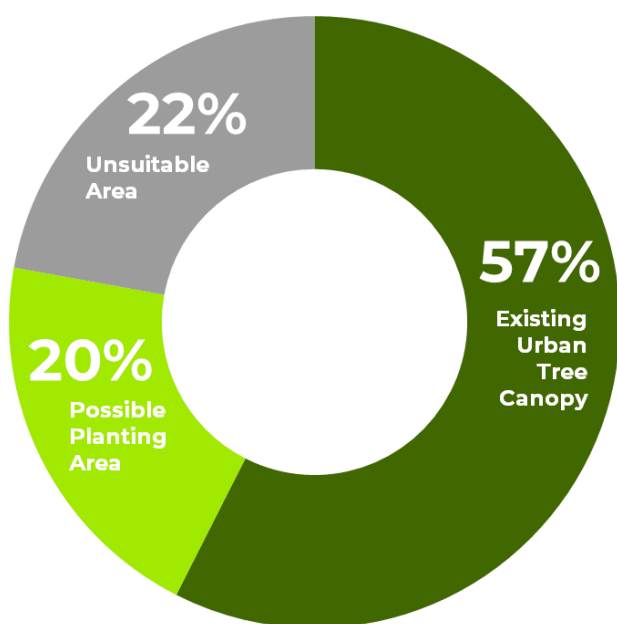
Note: Land cover percentages are based on total area. Urban tree canopy percentages are based on land area only.

Tree canopy data were analyzed for Black Diamond's land use categories to determine the distribution of existing and potential urban tree canopy throughout the city. Public Use/ Institutional areas had the highest canopy coverage at 67%, but 74% of all canopy in the City was found within Single-Family Residential areas as well as 74% of all plantable space.

Land Use	Urban Tree Canopy		
	Acres	%	Dist.
Central Business District	5	29%	0%
General Commercial	66	39%	3%
General Mixed Use	168	56%	7%
Industrial/ Manufacturing	172	44%	7%
Single-Family Residential	1,797	62%	74%
Public Use/ Institutional	62	67%	3%
Park/ Golf Course/ Trail/ Open Space	103	62%	4%
Rural Area	0	16%	0%
Undesignated	70	32%	3%
Totals	2,442	57%	100%



URBAN TREE CANOPY POTENTIAL IN BLACK DIAMOND, WASHINGTON



*Possible Planting Areas (PPA) were defined as vegetated areas without tree canopy and impervious surfaces such as parking lots and sidewalks. These areas may not be suitable for planting to increase canopy due to slope, views, soils, or other limitations. Field surveys to identify suitable planting areas are advised.

COMPARING URBAN TREE CANOPY IN KING COUNTY COMMUNITIES

