

TREE CANOPY ASSESSMENT



TOTAL STUDY AREA

3,868 ACRES



TREE CANOPY

1,130 ACRES (30%)



PLANTABLE SPACE

615 ACRES (16%)

Covington's urban forest is a valuable asset that provides residents and visitors with many ecological, environmental, and community benefits. This assessment analyzed the City's urban tree canopy (UTC) and possible planting area (PPA) within five geographic boundaries. The results provide baseline data to develop strategies to protect and expand Covington's trees and natural areas during planning and development. The maps and project report help to concentrate efforts in areas where needs are greatest, tree planting space is available, and benefits can be realized.

LAND COVER

30%

TREE CANOPY

17%

NON-CANOPY VEGETATION

43%

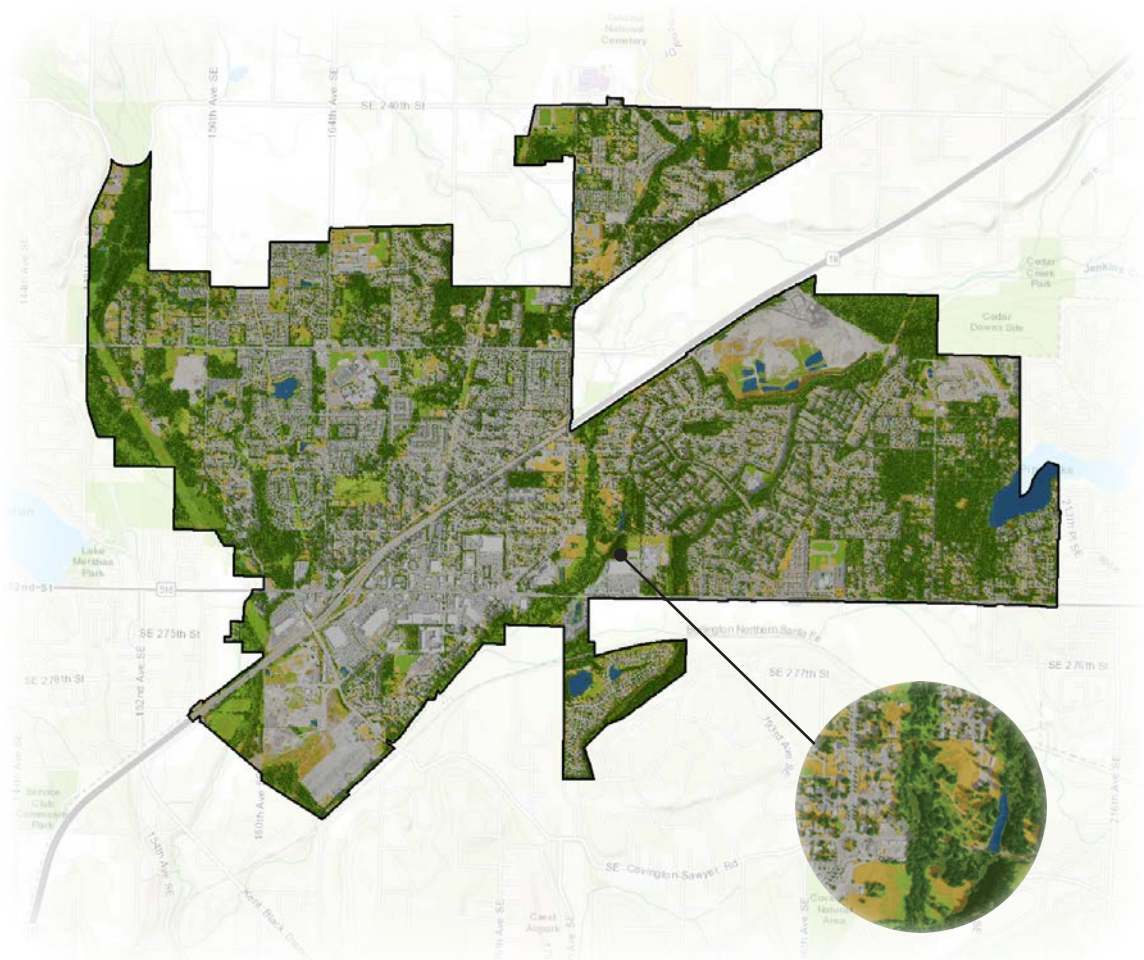
IMPERVIOUS

9%

SOIL & DRY VEGETATION

1%

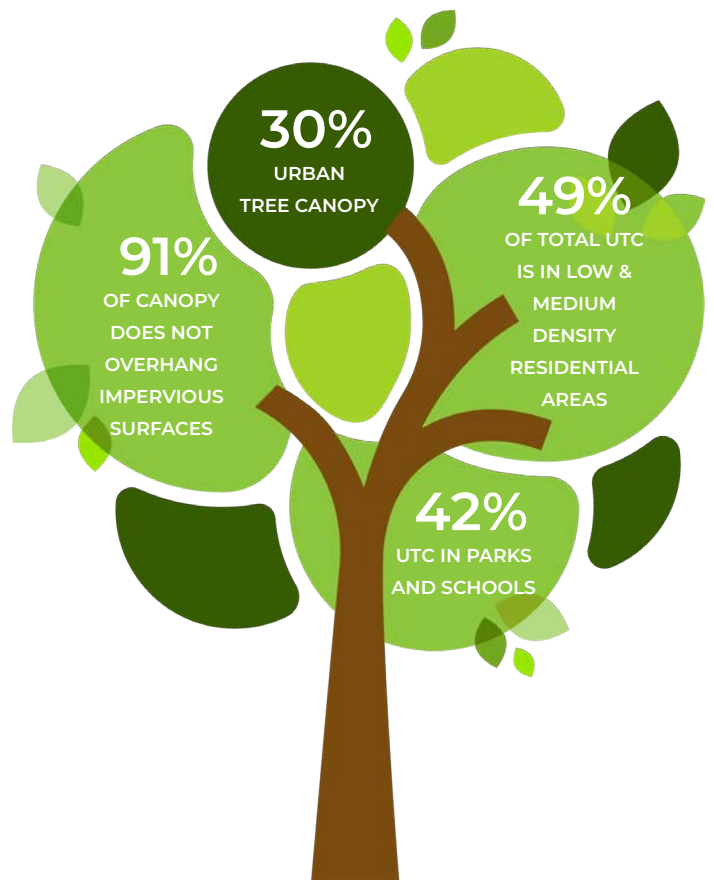
WATER



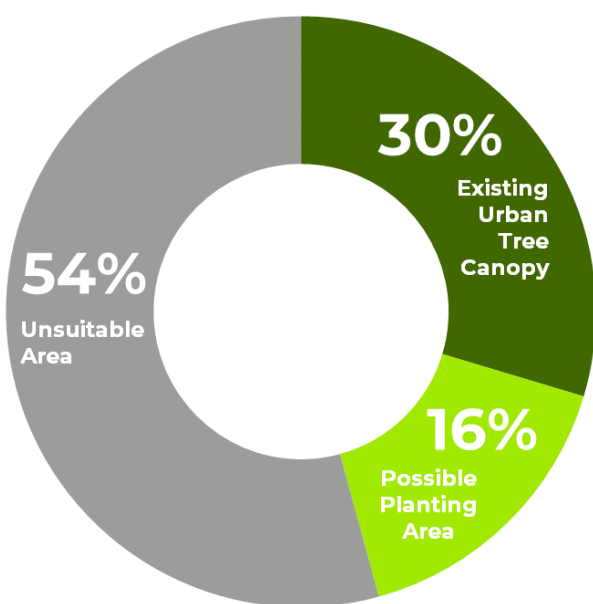
Note: Land cover percentages are based on total area. Urban tree canopy percentages are based on land area only.

Tree canopy data were analyzed for Covington's future land use categories to determine the distribution of existing and potential urban tree canopy throughout the city. Parks, Recreational Facilities, and Schools had the highest canopy coverage at 42%, but 49% of all canopy in the City was found within Low- and Medium-Density Residential areas as well as 47% of all plantable space.

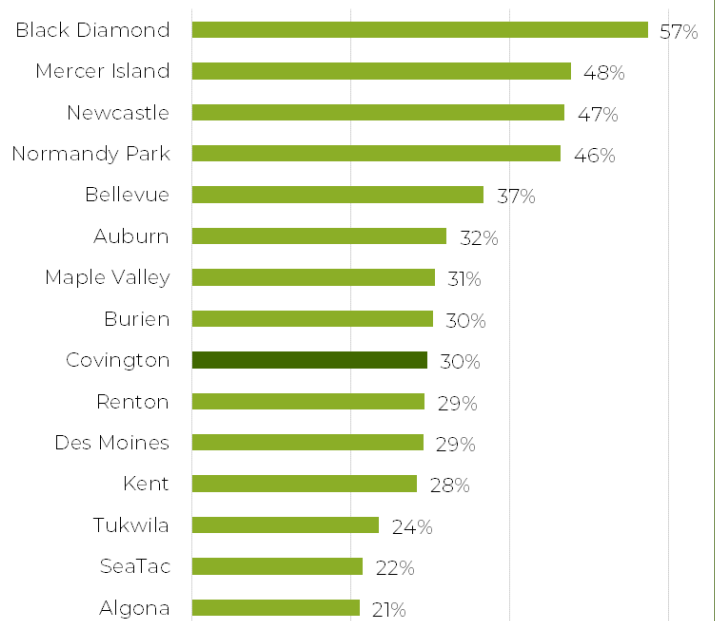
Land Use	Urban Tree Canopy		
	Acres	%	Dist.
Community Commercial	2	41%	0%
Downtown	60	16%	6%
Industrial	14	14%	1%
Lakepointe Urban Village	59	29%	6%
Urban Separator	83	40%	8%
Low Density Residential	254	41%	24%
Medium Density Residential	257	29%	25%
High Density Residential	133	31%	13%
MultiFamily Residential	6	28%	1%
Neighborhood Commercial	1	23%	0%
Parks, Recreation & Schools	176	42%	17%
Roadway	4	19%	0%
Totals	1,047	32%	100%



URBAN TREE CANOPY POTENTIAL IN COVINGTON, WASHINGTON



COMPARING URBAN TREE CANOPY IN KING COUNTY COMMUNITIES



*Possible Planting Areas (PPA) were defined as vegetated areas without tree canopy and impervious surfaces such as parking lots and sidewalks. These areas may not be suitable for planting to increase canopy due to slope, views, soils, or other limitations. Field surveys to identify suitable planting areas are advised.

