

# TREE CANOPY ASSESSMENT



**TOTAL STUDY AREA**

4,017 ACRES



**TREE CANOPY**

2017: 1,587 ACRES, 41%\*

2009: 1,656 ACRES, 43%\*



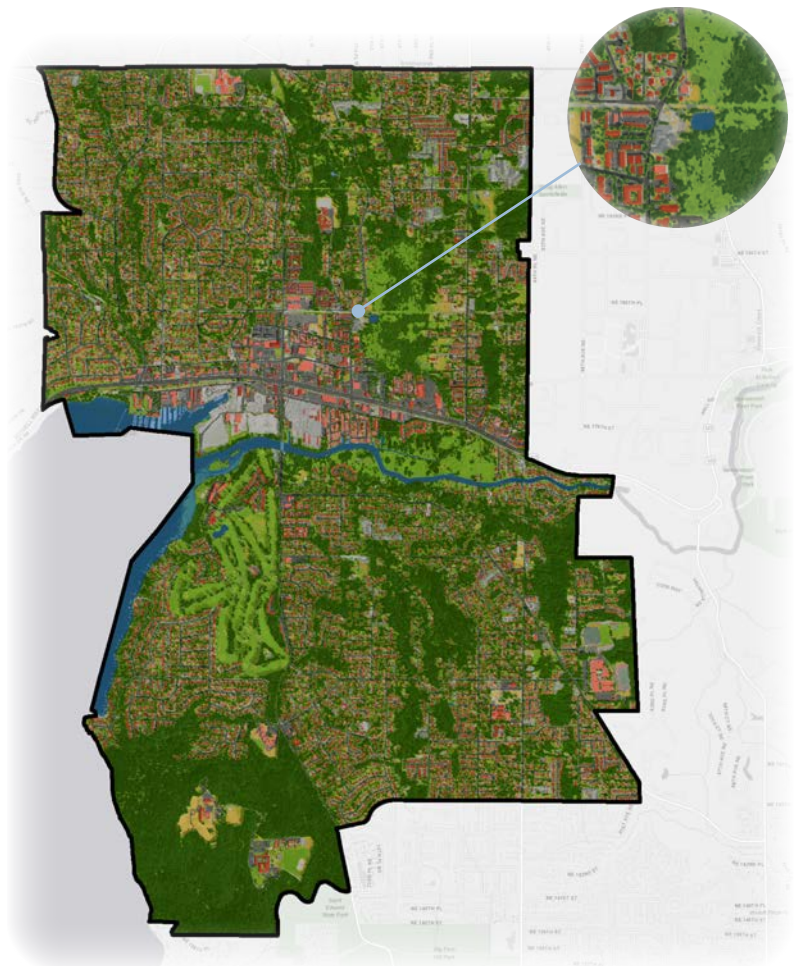
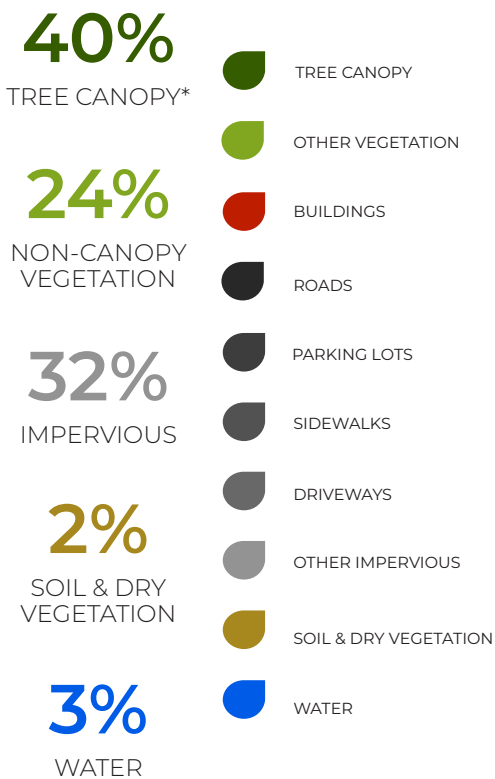
**PLANTABLE SPACE**

1,173 ACRES, 30%

*\*Urban tree canopy and possible planting area percentages are based on land area only.*

The urban forest in Kenmore is a valuable asset that provides residents and visitors with many ecological, environmental, and community benefits. This assessment analyzed the City's urban tree canopy (UTC), possible planting area (PPA), and change in UTC over an 8-year period (aerial Imagery 2009-2017). The results provide an updated baseline to develop strategies to protect and expand Kenmore's trees and natural areas during planning and development. The maps and project report help to concentrate efforts in areas where needs are greatest, tree planting space is available, and benefits can be realized.

## LAND COVER

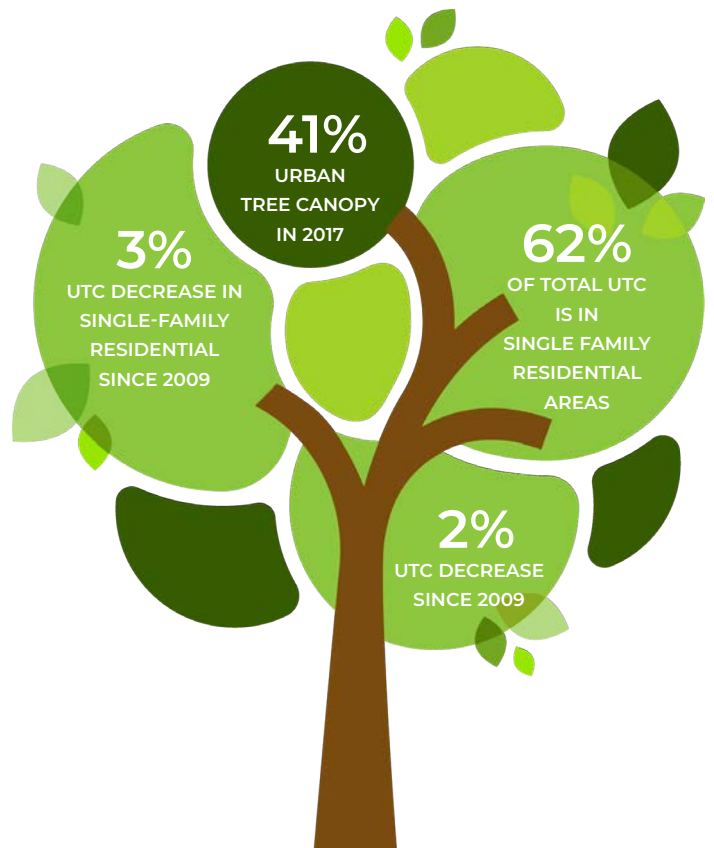


*\*Note: Land cover percentages are based on total area.*

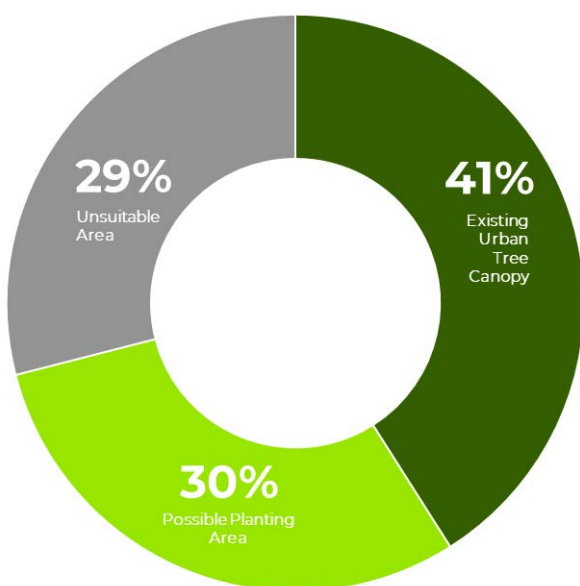
Tree canopy data were analyzed for Kenmore's land use

categories to determine the distribution of existing and potential urban tree canopy throughout the city. Single-family residential and public use/institutional areas had the highest canopy coverage at 42% and 58%, respectively, and contained more than 90% of the City's total canopy. Single-family residential areas had a 3% loss of canopy cover but contained 64% of the City's total plantable space.

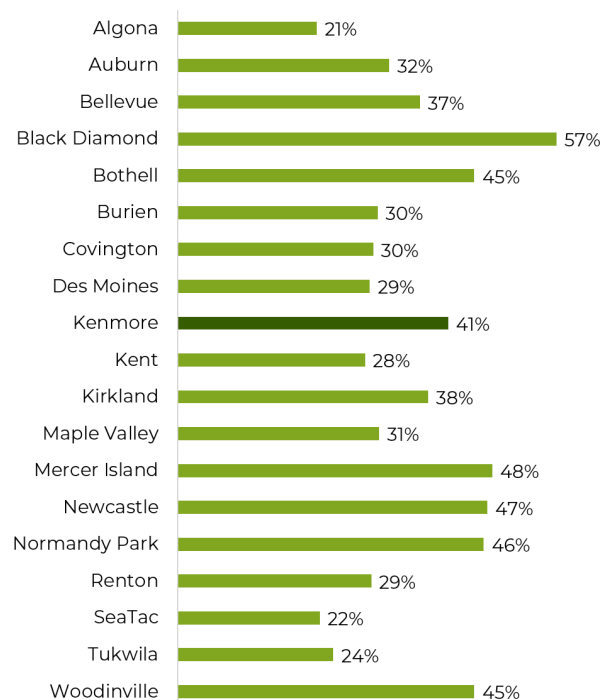
Urban Tree Canopy			
Land Use	Acres	%	Dist.
Central Business District	3	7%	0%
General Commercial	10	9%	1%
General Mixed Use	3	11%	0%
Single-Family Residential	977	42%	62%
Multi-Family Residential	47	28%	3%
Public Use/Institutional	452	58%	29%
Undesignated	93	20%	6%
<b>Totals</b>	<b>1,586</b>	<b>41%</b>	<b>100%</b>



### URBAN TREE CANOPY POTENTIAL



### COMPARING URBAN TREE CANOPY IN KING COUNTY COMMUNITIES



\*Possible Planting Areas (PPA) were defined as vegetated areas without tree canopy and impervious surfaces such as parking lots and sidewalks. These areas may not be suitable for planting to increase canopy due to slope, views, soils, or other limitations. Field surveys to identify suitable planting areas are advised.

