

TREE CANOPY ASSESSMENT



TOTAL STUDY AREA

21,995 ACRES



TREE CANOPY

6,125 ACRES (28%)



PLANTABLE SPACE

5,323 ACRES (25%)



Kent's urban forest is a valuable asset that provides residents and visitors with many ecological, environmental, and community benefits. This assessment analyzed the City's urban tree canopy (UTC) and possible planting area (PPA) within six geographic boundaries. The results provide baseline data to develop strategies to protect and expand Kent's trees and natural areas during planning and development. The maps and project report help to concentrate efforts in areas where needs are greatest, tree planting space is available, and benefits can be realized.

LAND COVER

28%

TREE CANOPY

25%

NON-CANOPY VEGETATION

12%

BUILDINGS

28%

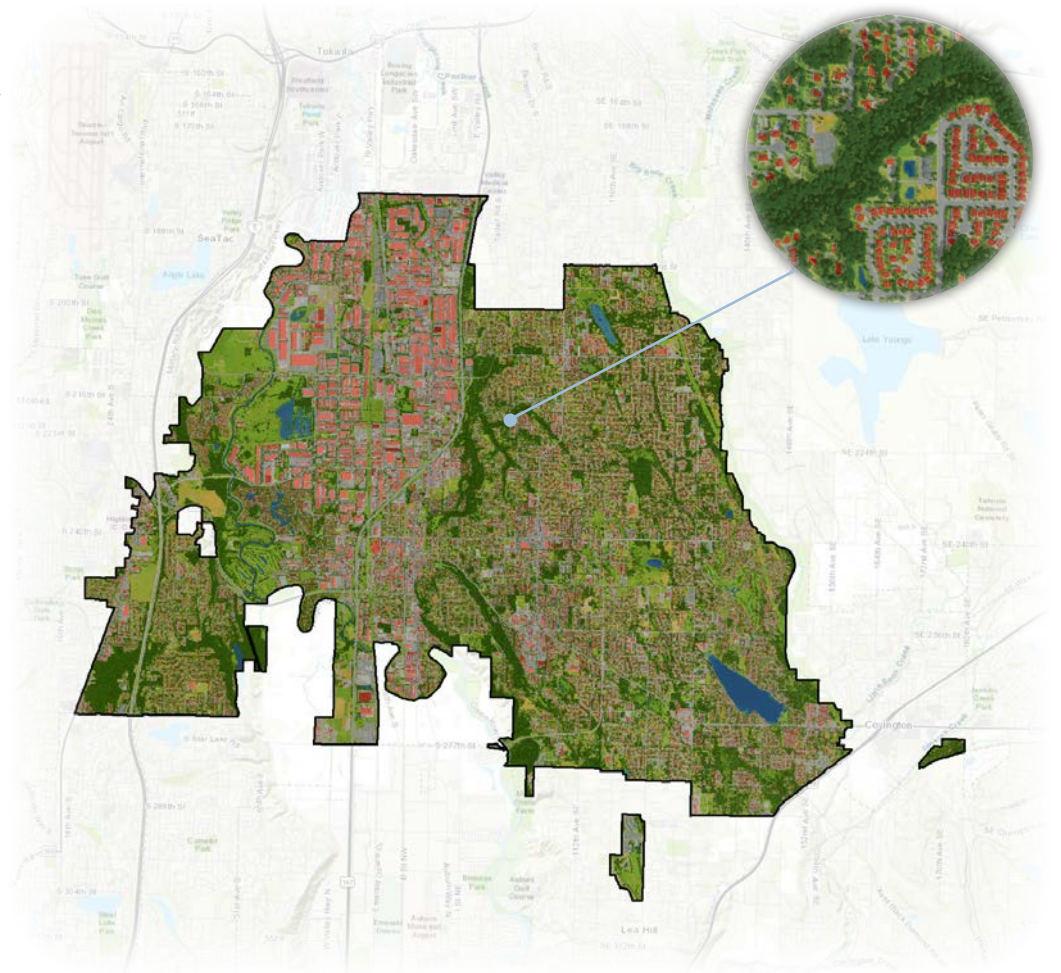
OTHER IMPERVIOUS

5%

SOIL & DRY VEGETATION

2%

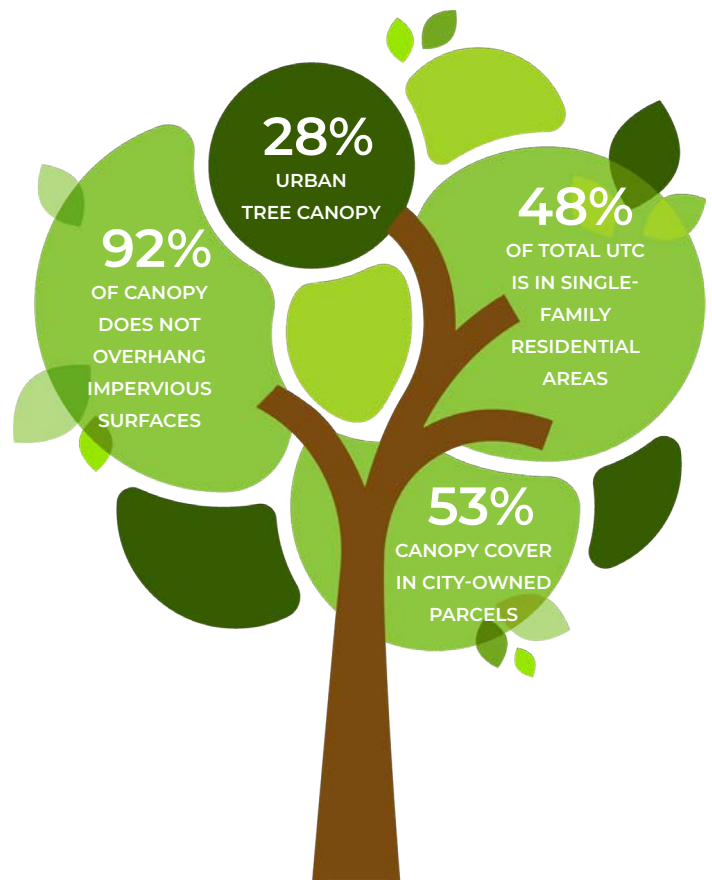
WATER



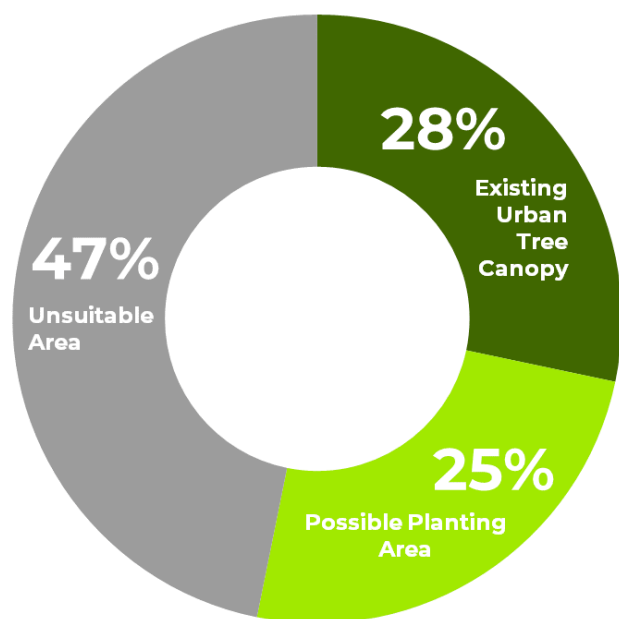
Note: Land cover percentages are based on total area. Urban tree canopy percentages are based on land area only.

Tree canopy data were analyzed for Kent's land use categories to determine the distribution of existing and potential urban tree canopy throughout the city. Undesignated areas had the greatest canopy coverage with 62%, but 48% of all canopy in the City was found within Single-Family Residential areas as well as 49% of all plantable space.

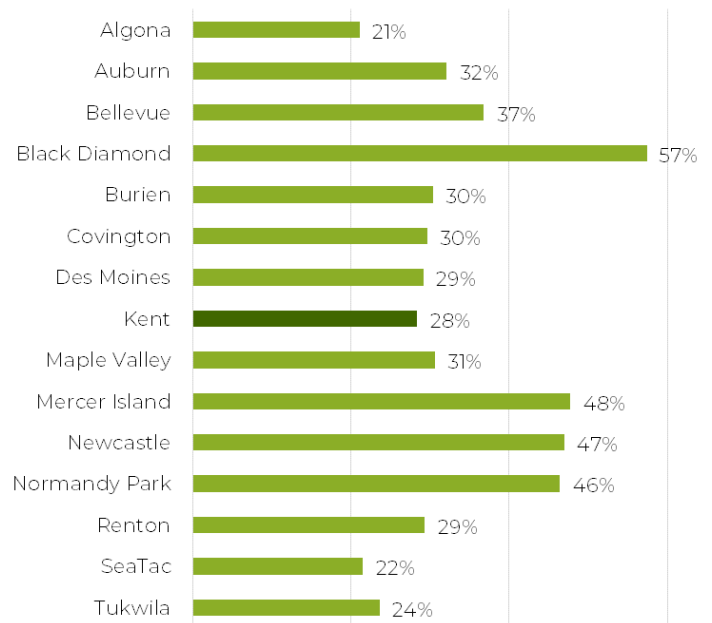
| County Land Use | Urban Tree Canopy | | |
|-----------------------------------|-------------------|------------|-------------|
| | Acres | % | Dist. |
| Central Business District | 58 | 12% | 1% |
| General Commercial | 120 | 17% | 2% |
| General Mixed Use | 98 | 16% | 2% |
| Mixed Use/Commercial/Residential | 54 | 20% | 1% |
| Industrial/Manufacturing | 550 | 13% | 9% |
| Single-Family Residential | 2,966 | 30% | 48% |
| Multi-Family Residential | 522 | 32% | 9% |
| Mobile Home Park | 32 | 19% | 1% |
| Public Use/Institutional | 0.02 | 22% | 0% |
| Park/Golf Course/Trail/Open Space | 1,284 | 47% | 21% |
| Agriculture-Related | 26 | 10% | 0% |
| Rural Area | 0.05 | 83% | 0% |
| Undesignated | 420 | 62% | 7% |
| Totals | 6,129 | 28% | 100% |



URBAN TREE CANOPY POTENTIAL IN KENT, WASHINGTON



COMPARING URBAN TREE CANOPY IN KING COUNTY COMMUNITIES



*Possible Planting Areas (PPA) were defined as vegetated areas without tree canopy and impervious surfaces such as parking lots and sidewalks. These areas may not be suitable for planting to increase canopy due to slope, views, soils, or other limitations. Field surveys to identify suitable planting areas are advised.

