

# TREE CANOPY ASSESSMENT



TOTAL STUDY AREA

1,622 ACRES



TREE CANOPY

740 ACRES (46%)



PLANTABLE SPACE

456 ACRES (29%)

Normandy Park's urban forest is a valuable asset that provides residents and visitors with many ecological, environmental, and community benefits. This assessment analyzed the City's urban tree canopy (UTC) and possible planting area (PPA) within seven geographic boundaries. The results provide baseline data to develop strategies to protect and expand Normandy Park's trees and natural areas during planning and development. The maps and project report help to concentrate efforts in areas where needs are greatest, tree planting space is available, and benefits can be realized.

## LAND COVER

46%

TREE CANOPY

29%

NON-CANOPY VEGETATION

21%

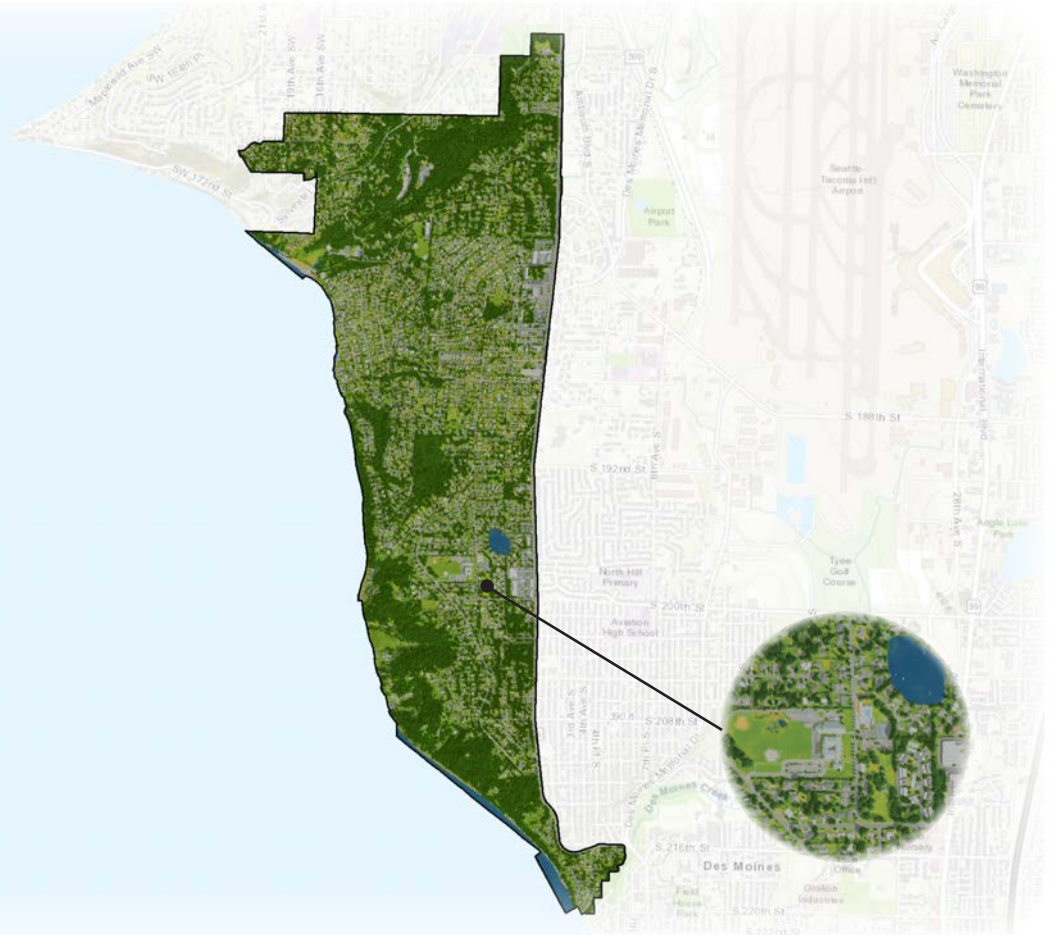
IMPERVIOUS

3%

SOIL & DRY VEGETATION

2%

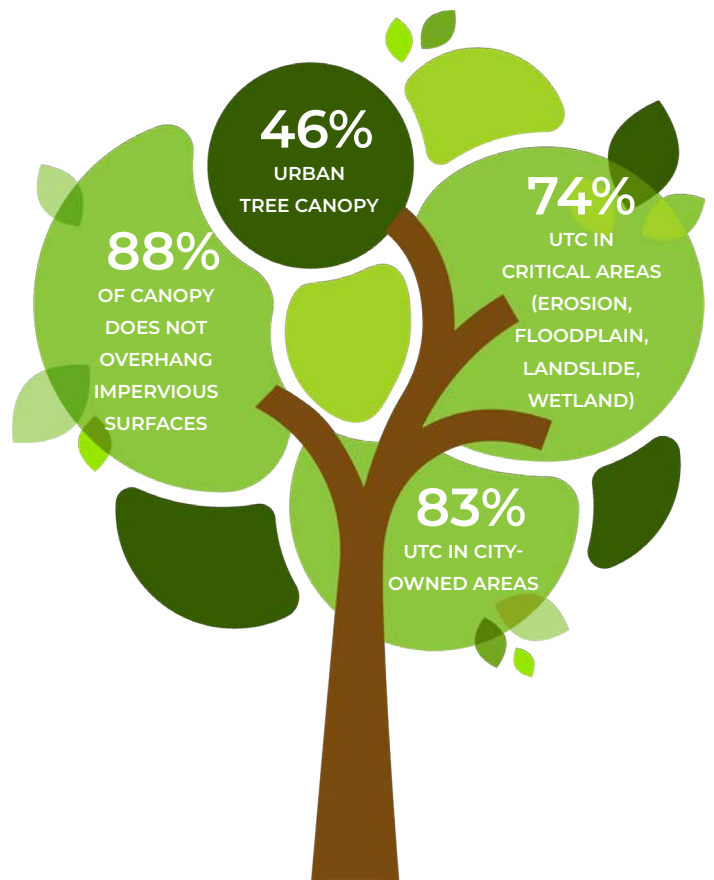
WATER



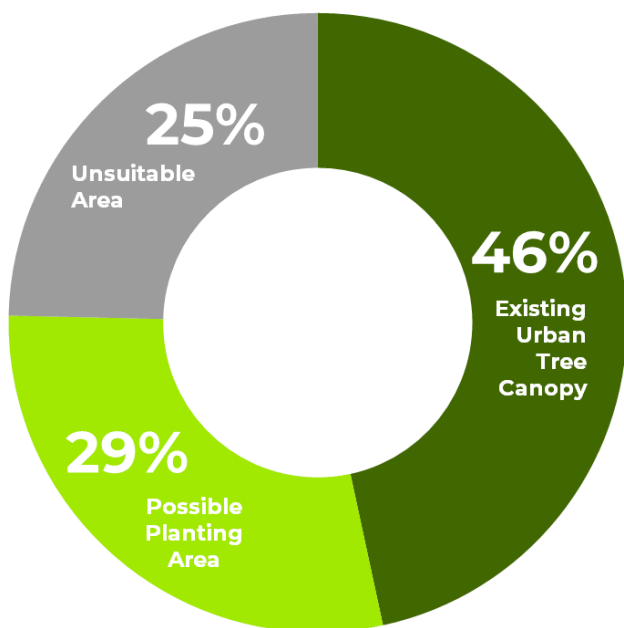
Note: Land cover percentages are based on total area. Urban tree canopy percentages are based on land area only.

Tree canopy data were analyzed for Normandy Park's land use categories to determine the distribution of existing and potential urban tree canopy throughout the city. Parks/ Golf Courses/ Trails/ Open Spaces had the highest canopy coverage at 69%, but 74% of all canopy in the City was found within Single-Family Residential areas as well as 81% of all plantable space.

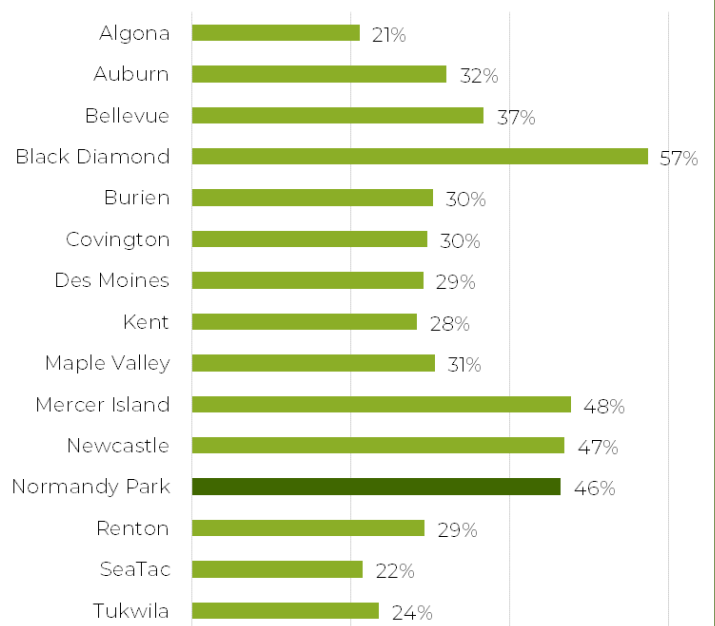
Land Use	Urban Tree Canopy		
	Acres	%	Dist.
General Commercial	3	18%	0%
General Mixed Use	3	23%	0%
Single-Family Residential	549	48%	74%
Multi-Family Residential	8	27%	1%
Park/ Golf Course /Trail/ Open Space	96	69%	13%
Undesignated	78	33%	11%
<b>Totals</b>	<b>738</b>	<b>46%</b>	<b>100%</b>



### URBAN TREE CANOPY POTENTIAL IN NORMANDY PARK, WASHINGTON



### COMPARING URBAN TREE CANOPY IN KING COUNTY COMMUNITIES



\*Possible Planting Areas (PPA) were defined as vegetated areas without tree canopy and impervious surfaces such as parking lots and sidewalks. These areas may not be suitable for planting to increase canopy due to slope, views, soils, or other limitations. Field surveys to identify suitable planting areas are advised.