

TREE CANOPY ASSESSMENT



TOTAL STUDY AREA

6,155 ACRES



TREE CANOPY

1,390 ACRES (24%)



PLANTABLE SPACE

1,146 ACRES (19%)



Tukwila's urban forest is a valuable asset that provides residents and visitors with many ecological, environmental, and community benefits. This assessment analyzed the City's urban tree canopy (UTC) and possible planting area (PPA) within five geographic boundaries. The results provide baseline data to develop strategies to protect and expand Tukwila's trees and natural areas during planning and development. The maps and project report help to concentrate efforts in areas where needs are greatest, tree planting space is available, and benefits can be realized.

LAND COVER

23%

TREE CANOPY

20%

NON-CANOPY VEGETATION

48%

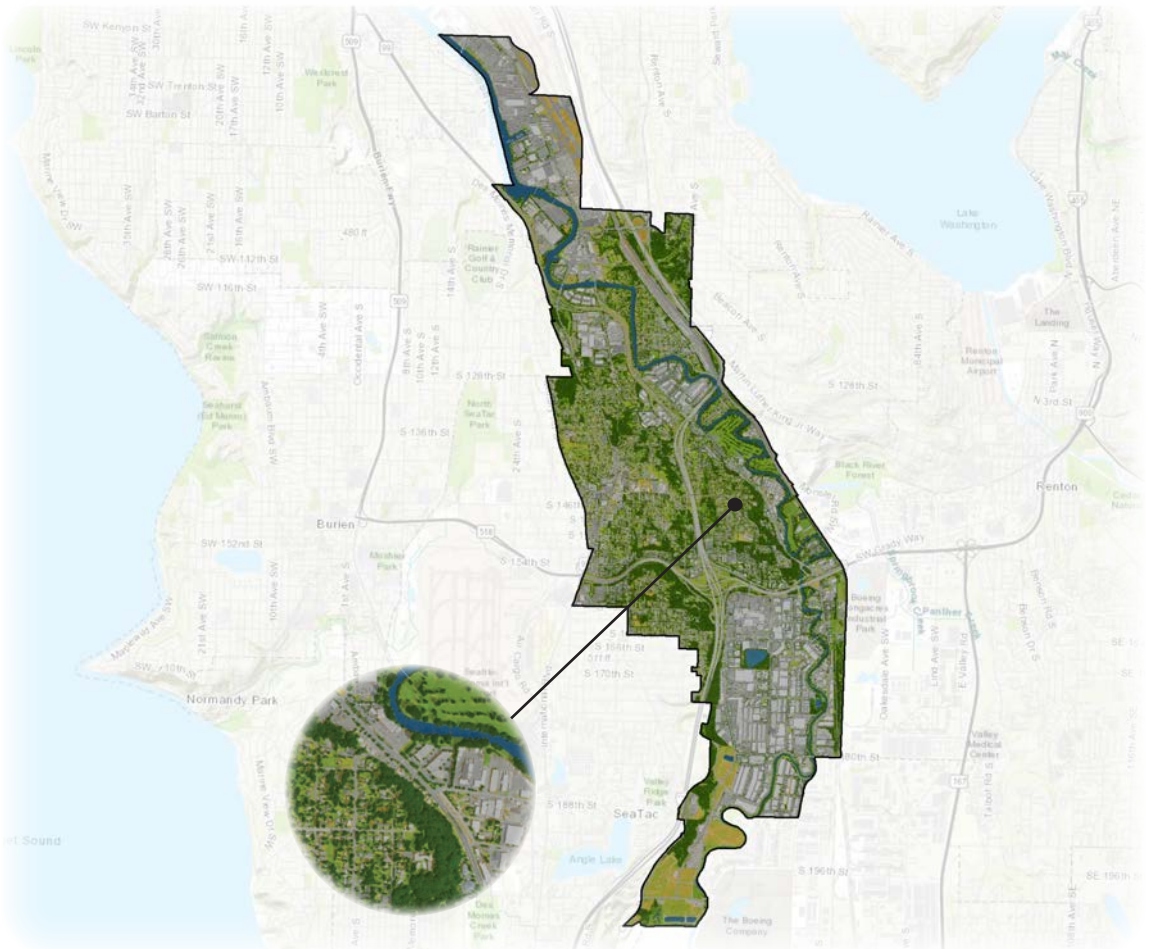
IMPERVIOUS

5%

SOIL & DRY VEGETATION

4%

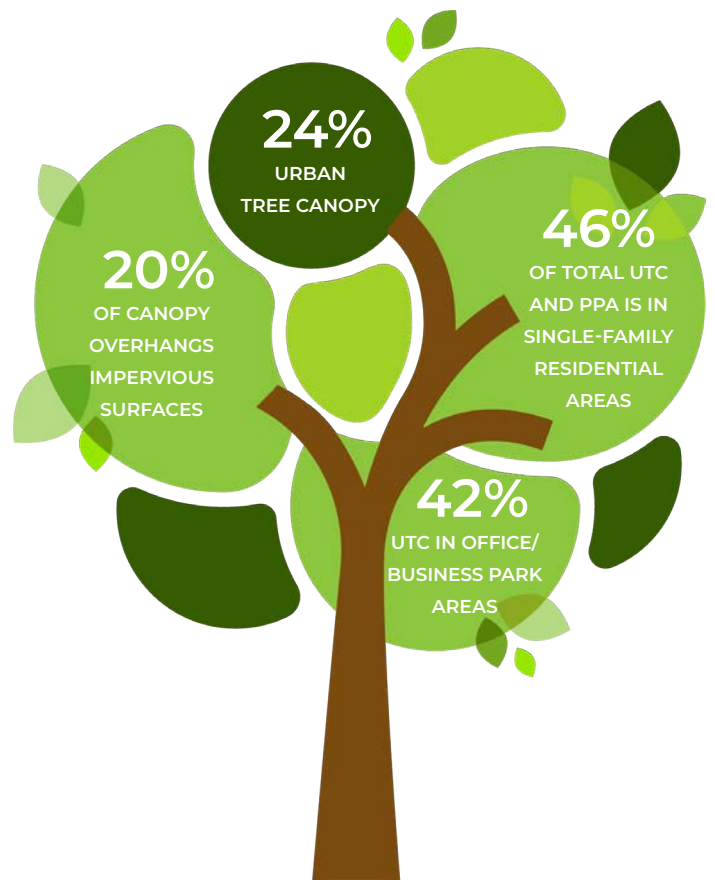
WATER



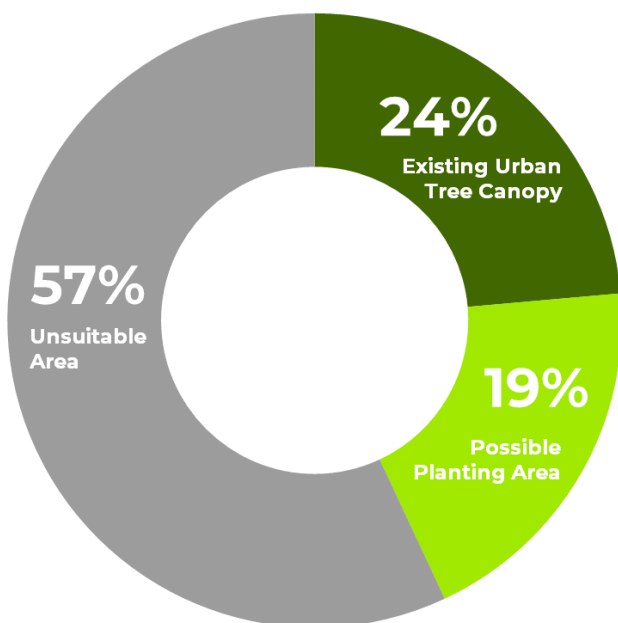
Note: Land cover percentages are based on total area. Urban tree canopy percentages are based on land area only.

Tree canopy data were analyzed for Tukwila's land use categories to determine the distribution of existing and potential urban tree canopy throughout the city. The Office/Business Park class had the highest canopy coverage at 42% followed by the Single-Family Residential class at 39%. Single-Family Residential areas contained 46% of all canopy in the City as well as 46% of all plantable space.

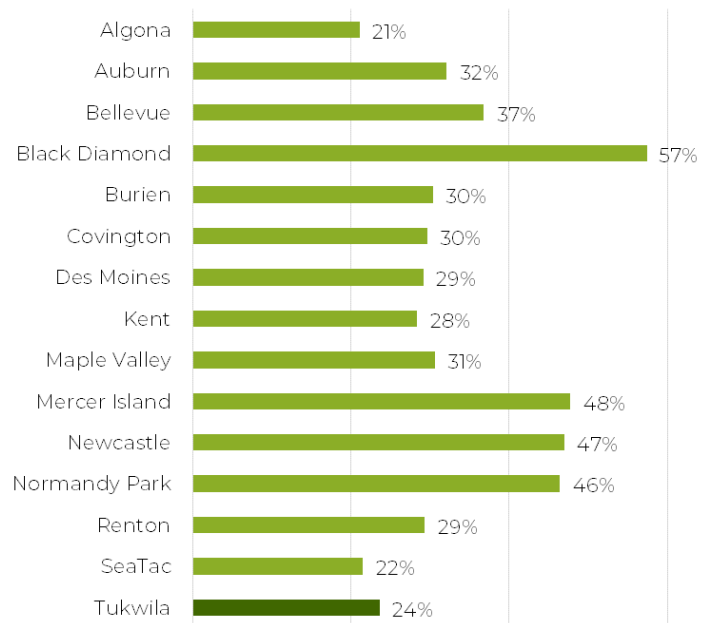
Land Use	Urban Tree Canopy		
	Acres	%	Dist.
General Commercial	14	13%	1%
General Mixed Use	154	14%	11%
Industrial/Manufacturing	211	14%	15%
Mixed Use Commercial/Office	3	11%	0%
Office/Business Park	21	42%	2%
Single-Family Residential	645	39%	46%
Multi-Family Residential	42	29%	3%
Undesignated	299	24%	22%
Totals	1,390	24%	100%



URBAN TREE CANOPY POTENTIAL IN TUKWILA, WASHINGTON



COMPARING URBAN TREE CANOPY IN KING COUNTY COMMUNITIES



*Possible Planting Areas (PPA) were defined as vegetated areas without tree canopy and impervious surfaces such as parking lots and sidewalks. These areas may not be suitable for planting to increase canopy due to slope, views, soils, or other limitations. Field surveys to identify suitable planting areas are advised.

