

TREE CANOPY ASSESSMENT



TOTAL STUDY AREA

3,618 ACRES



TREE CANOPY

2017: 1,622 ACRES, 45%

2009: 1,492 ACRES, 42%



PLANTABLE SPACE

397 ACRES, 11%

**Urban tree canopy and possible planting area percentages are based on land area only*



The urban forest in Woodinville is a valuable asset that provides residents and visitors with many ecological, environmental, and community benefits. This assessment analyzed the City's urban tree canopy (UTC), possible planting area (PPA), and change in UTC over a 8-year period. The results provide a detailed data resource to develop strategies to protect trees and expand canopy coverage in our urban and natural areas during planning and development. The maps and project report help to concentrate efforts in areas where needs are greatest, tree planting space is available, and benefits can be realized.

LAND COVER

45% TREE CANOPY

TREE CANOPY*

11% OTHER VEGETATION

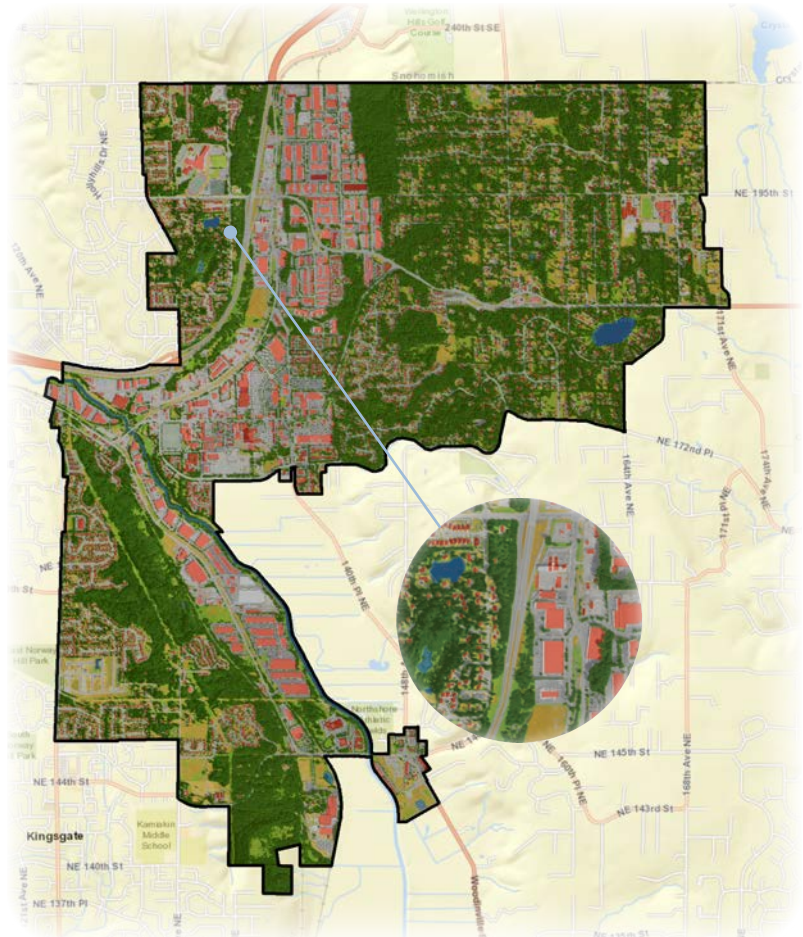
NON-CANOPY VEGETATION

36% BUILDINGS

IMPERVIOUS

7% SOIL & DRY VEGETATION

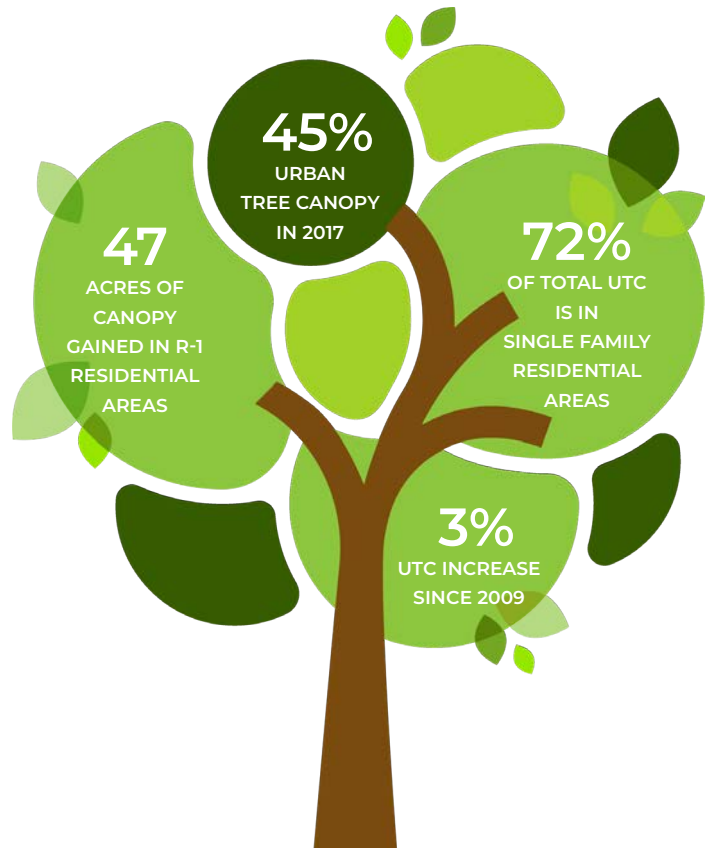
1% WATER



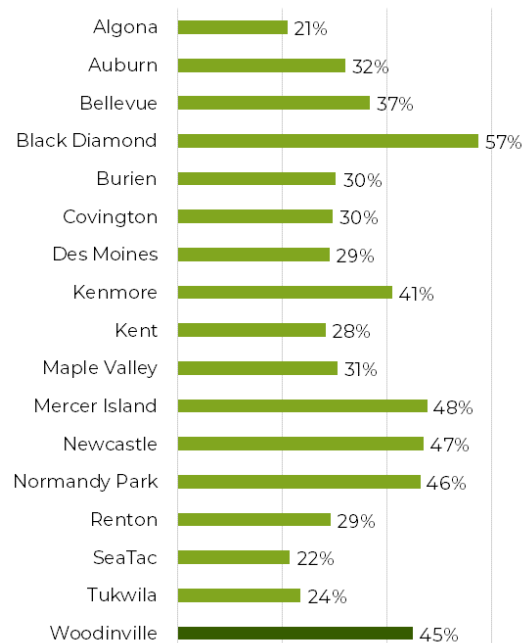
**Land cover percentages are based on total area.*

Tree canopy data were analyzed for Woodinville's land use categories to determine the distribution of existing and potential urban tree canopy throughout the city. Single-Family Residential and Park/Golf Course/Trail/Open Space had the highest canopy coverage at 59% and 79%, respectively, and comprised 79% the City's total canopy when combined, single family residential also contained 64% of the City's total plantable space.

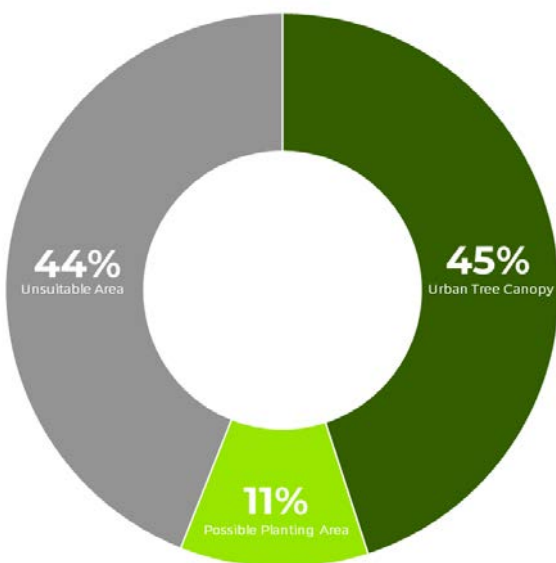
Land Use	Urban Tree Canopy		
	Acres	%	Dist.
Central Business District	31	17%	2%
General Commercial	21	15%	1%
Industrial/Manufacturing	117	22%	7%
Mixed Use Commercial/Residential	14	59%	1%
Multi-Family Residential	10	37%	1%
Office/Business Park	4	29%	0%
Park/Golf Course/Trail/Open Space	109	79%	7%
Public Use/Institutional	28	26%	2%
Single-Family Residential	1,176	59%	72%
Undesignated	111	25%	7%
Totals	1,622	45%	100%



COMPARING URBAN TREE CANOPY IN KING COUNTY COMMUNITIES



URBAN TREE CANOPY POTENTIAL



*Possible Planting Areas (PPA) were defined as vegetated areas without tree canopy and impervious surfaces such as parking lots and sidewalks. These areas may not be suitable for planting to increase canopy due to slope, views, soils, or other limitations. Field surveys to identify suitable planting areas are advised.

