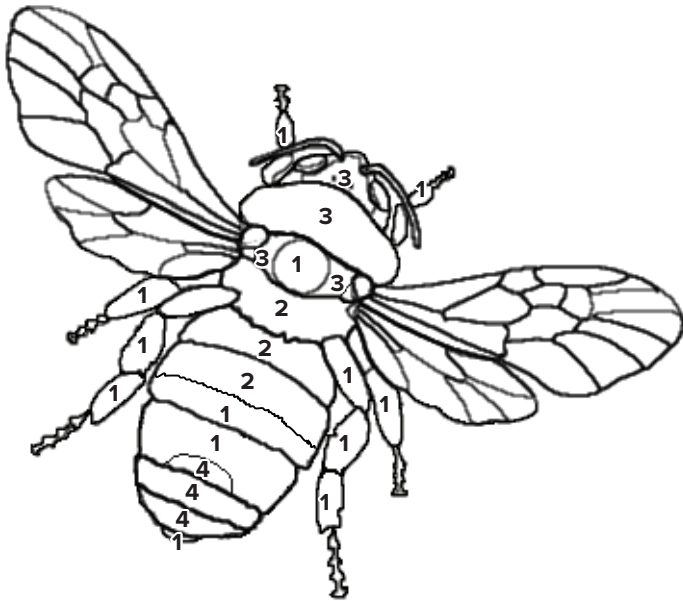


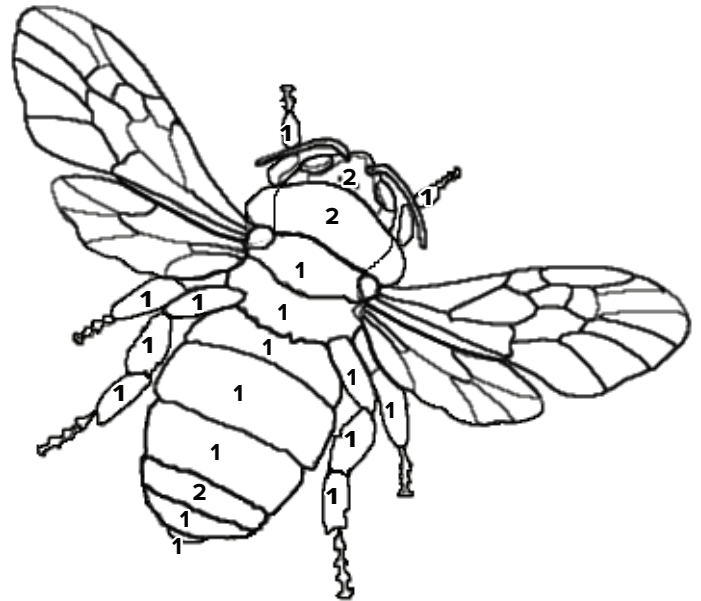
KING COUNTY BEES!

Bumble bees help pollinate many of our favorite foods that honey bees can't, including blueberries, tomatoes, potatoes and other fruits and vegetables. Learn to identify King County's most common bumble bees by coloring the bees below by number! If you see *Bombus occidentalis*, a very rare bumble bee, contact Xerces Society at bumblebees@xerces.org.

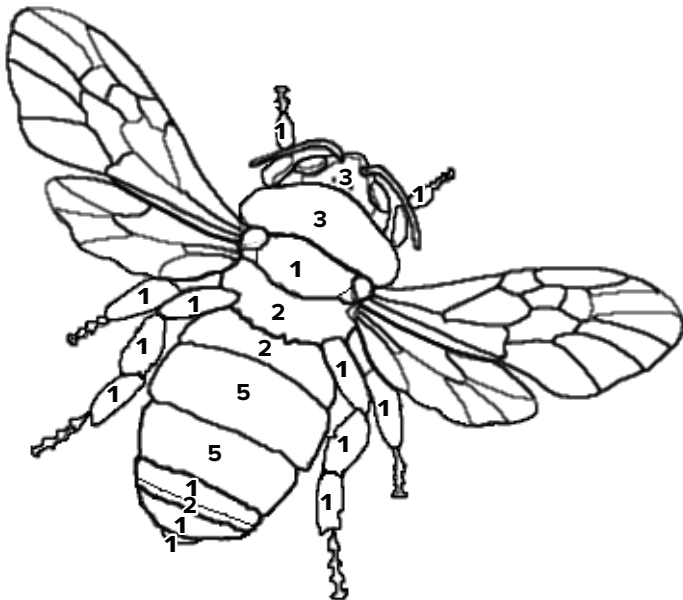
1 = black 2 = yellow 3 = dark yellow 4 = light orange 5 = red-orange 6 = white



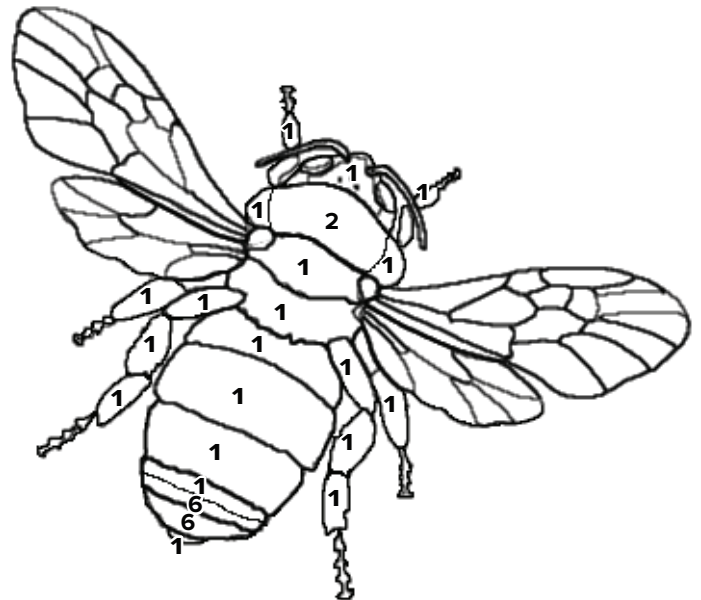
Bombus mixtus
the fuzzy-horned bumblebee



Bombus vosnesenskii
the Vosnesensky bumble bee



Bombus melanopygus
the black-tail bumble bee



Bombus occidentalis
the Western bumblebee

adapted from Urban Pollination Project, Marie Clifford 2013

www.urbanpollinationproject.org